

From: [Lance Schulte](#)
To: [Council Internet Email](#); [City Clerk](#); [Boyle, Carrie@Coastal](#); ["Prahler, Erin@Coastal"](#); ["Ross, Toni@Coastal"](#); [Kyle Lancaster](#); [Don Neu](#); [Eric Lardy](#); ["Smith, Darren@Parks"](#); ["Homer, Sean@Parks"](#); ["Moran, Gina@Parks"](#); [Michele Hardy](#); [Growth Management Committee](#); [Scott Donnell](#)
Cc: [info@peopleforponto.com](#)
Subject: CTGMC 2022-10-12 meeting Public Input follow-up & Public input to Carlsbad LCPA, Parks Master Plan Update, & Growth Management Program Update — 10 minute Park standard & images of Park need at Ponto
Date: Thursday, October 13, 2022 7:25:48 AM
Attachments: [image001.png](#)
[image003.emz](#)
[image006.png](#)
[Images of Park need at Ponto - 2022-10-13.pdf](#)
Importance: High

Dear Carlsbad Council, Carlsbad Parks and Planning Commission, Carlsbad Tomorrow Growth Management Committee, and CA Coastal Commission and CA State Parks:

Please include this email/attached images as public input to the Council and Citizen Committees/Commissions regarding the 10/12/22 CTGMC meeting, the City's proposed Park Master Plan Update, City's proposed Housing Element Land Use changes at Ponto – Ponto Site 18, and City's and CA Coastal Commission's consideration of the City's proposed Local Coastal Program Land Use Plan Amendment.

Yesterday I made verbal public testimony on the fact that Carlsbad's children and their parents/grandparents at Ponto are forced to use the LOSAN Rail Corridor fight-of-way and City and private streets as their playground and Park. Attached is the updated file of more images showing that condition including the family having to play ball in a Carlsbad City Street because there is no Ponto Park and Ponto developers were falsely exempted from providing 15% Useable Open Space as required by the Growth Management Open Space Standard and Ordinance.

The City of Carlsbad has declared a Public Emergency regarding pedestrian/bike/vehicle safety on Carlsbad roadways. Yet here are examples of Carlsbad's Ponto children/families forced to play in City Streets or along high-speed rail corridors because the City failed to provide both Required 15% Useable Open Space and a Park at Ponto. What is the CTGMC and City of Carlsbad doing regarding this situation? Will it take a Ponto child to hit (killed) by a car or train to open your eyes, open your minds, and open your hearts, to what the City needs to provide – Ponto Park and LFMP Zone 9 compliance with the Growth Management Open Space Standard?

The City of Carlsbad created the problem BECAUSE the City falsely exempted Ponto developers (LFMP Zone 9) from providing the 15% Useable Open Space required by Growth Management Standards, and the City choose to abandon common sense Park planning principles to say that Ponto's Park needs will be met over 6-miles away at Veterans Park. The City has now acknowledged (in their traffic/visitor estimates) that Veterans Park 'in fact' will not provide Park resources to children and families at Ponto and most other areas of the City. This relates to issues and 1st set of images sent to you in the June 27th email below.

City Council, Planning-Parks-Housing Commissions and CA Coastal Commission we hope the images give you a visual reference/understanding of some of the Park and Useable Open Space needs that have been communicated to you by over 5,000 citizen/visitor petitions, many hours verbal public

input and many pages of documented data/facts. **Will it take a child getting killed by having to play in railroad corridors and streets to get your attention and get you to act for our future – our children and their children?**

Sincerely,
Lance Schulte

From: Lance Schulte [mailto:meyers-schulte@sbcglobal.net]
Sent: Monday, June 27, 2022 12:27 PM
To: council@carlsbadca.gov; 'City Clerk'; 'Carrie Boyle'; 'Prahler, Erin@Coastal'; 'Ross, Toni@Coastal'; 'Kyle Lancaster'; Don Neu; Eric.lardy@carlsbadca.gov; 'Smith, Darren@Parks'; 'Homer, Sean@Parks'; 'Moran, Gina@Parks'
Cc: info@peopleforponto.com
Subject: Public input to Carlsbad LCPA, Parks Master Plan Update, & Growth Management Program Update — 10 minute Park standard & images of Park need at Ponto

Dear Carlsbad Council, Carlsbad Parks and Planning Commission, Carlsbad Tomorrow Growth Management Committee, and CA Coastal Commission and CA State Parks:

We ask you to please consider this email, news article, images, and files and request this be distributed/documented as public input to the Carlsbad LCP Amendment, Park Master Plan Update, and Growth Management Program Update.

Please take a look at Coast News Article <https://thecoastnews.com/olympus-park-brings-encinitas-closer-to-ensuring-all-residents-live-within-a-10-minute-walk-to-a-park/> . The 10-minute walk to Park issue can be clearly seen in the attached images as Ponto citizens are forced to use narrow Railroad right-of-way or play in local streets as recreational space. Because Ponto is the last meaningful sized vacant Coastal land in South Carlsbad an informal Ponto Park has been created by citizens. Every day about 50-100 inland Carlsbad Citizens use now vacant Ponto land for dog walking and playing, and before the fences beach parking.

P4P has been documenting and communicating to the City that Carlsbad does not have a Park policy for 10-minute walk access to Parks like BOTH Encinitas & Oceanside; that Carlsbad's Park Acreage standard (3 parks acres per 1,000 population) is also 40% below the 5 park acres per 1,000 population BOTH Encinitas and Oceanside require of development and provide their Citizens; that Carlsbad's Park Master Plan maps Ponto as an area Unserved by City parks and an area the City should look at to provide City Parks sufficient in size for the population Unserved, and that Ponto is at the center of a 6-mile long gap with no Coastal Park (between Moonlight & Cannon parks).

The Trust for Public Land cited in the article has already sent the City & CCC a letter of support for Ponto Park. People for Ponto Carlsbad Citizens also sent you comparison Park research using the National Recreation & Park Association data base, and a Coastal Recreation data file with important comparative Coastal Park data – such as that many of Carlsbad's Park acres are unusable as Parks – the acres inaccurately counted as Parks are in fact protected habitat that cannot be used by people,

or are covered in parking lots. This makes Carlsbad's Actual Useable Park Acreage well below what the City accounts for as Park. We encourage the Citizens Carlsbad Tomorrow Growth Management Committee, Carlsbad Council, Carlsbad Parks and Planning Commission, and CCC read and consider the Citizen input and data provided.

Lance

[The Coast News Group](#) = link to 10-minute walk to Park article

The Coast News Group

Your community. Your newspaper. Covers Camp Pendleton, Oceanside, Carlsbad, Encinitas, Solana Beach, Del Mar, Carmel Valley, Rancho Santa Fe, Escondido, San Marcos & Vista.



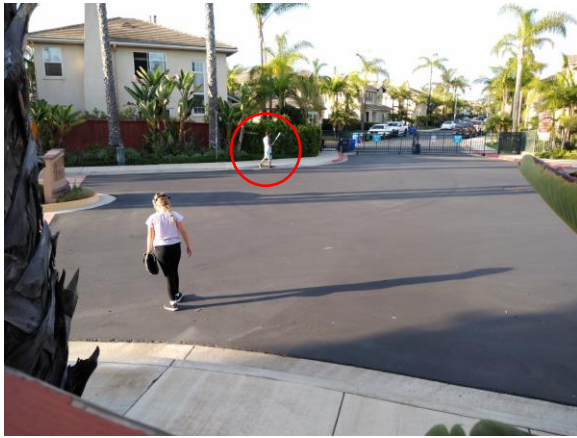
Images of Park need at Ponto: Carlsbad Citizens forced to use vacant land & streets; and Ponto vacant land used as needed South Carlsbad Coastal Park for inland South Carlsbad citizens and families



Images of Park need at Ponto: Carlsbad Citizens forced to use vacant land & streets; and Ponto vacant land used as needed South Carlsbad Coastal Park for inland South Carlsbad citizens and families



Images of Park need at Ponto: Carlsbad Citizens forced to use vacant land & streets; and Ponto vacant land used as needed South Carlsbad Coastal Park for inland South Carlsbad citizens and families



Images of Park need at Ponto: Carlsbad Citizens forced to use vacant land & streets; and Ponto vacant land used as needed South Carlsbad Coastal Park for inland South Carlsbad citizens and families

