

# Land Management Updates HMP Annual Meeting



Vince Rivas and Kathleen Pollett  
Habitat Managers

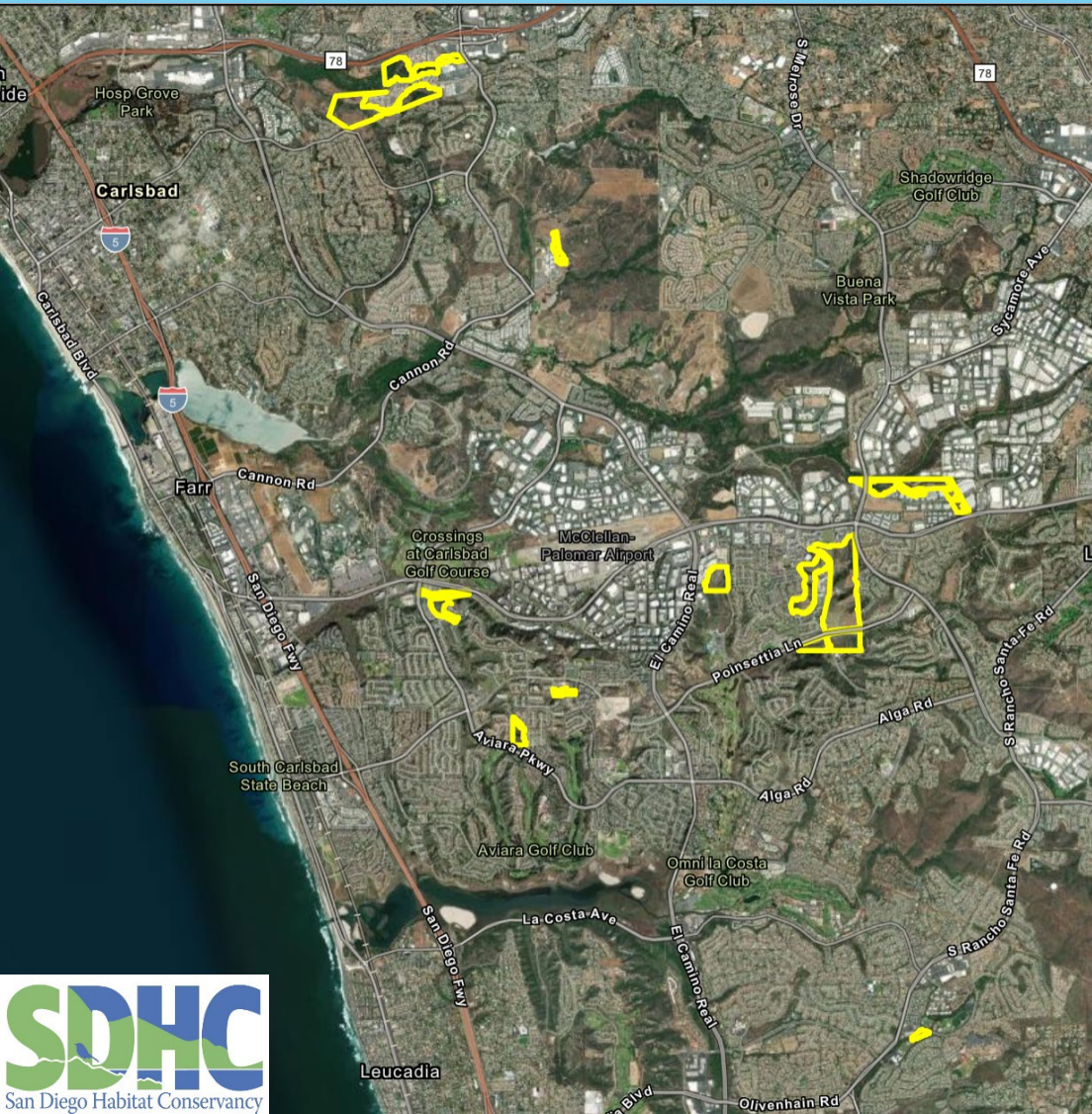
March 2, 2023

# Open Space Preserves Managed by SDHC

Over 2,000 acres of managed open space land.

34 active preserves throughout the County. Nine active preserves in Carlsbad (over 390 acres), one Under Contract, and six Pending:

- Bressi Ranch
- Carlsbad Raceway
- Daybreak
- Emerald Pointe
- Laurel Tree Lane
- Muroya
- Quarry Creek
- Sage Creek High School
- Sonata
- Poinsettia 61 (under contract)



# Protocol Species Surveys Results

In 2022, we performed protocol surveys for the federally threatened coastal California gnatcatcher (*Polioptila californica californica*; CAGN) at the Carlsbad Preserves listed below:

- Carlsbad Raceway
- Emerald Pointe
- Muroya
- Quarry Creek

SDHC also surveyed for the federally endangered least Bell's vireo (*Vireo bellii pusillus*; LBVI) at Quarry Creek.



Female CAGN on nest at Carlsbad Raceway.



LBVI foraging at Quarry Creek.

Photos by Vince Rivas

# Bressi Ranch – Ward’s Weed Control

Targeted removal of Ward’s weed (*Carrichtera annua*) (Cal-IPC rating: Moderate – Alert) within the Bressi Ranch Preserve; first known location of this invasive herb in San Diego County.

Ward’s weed populations growing in disturbed areas, but also on steep hillsides under dense native shrubs.

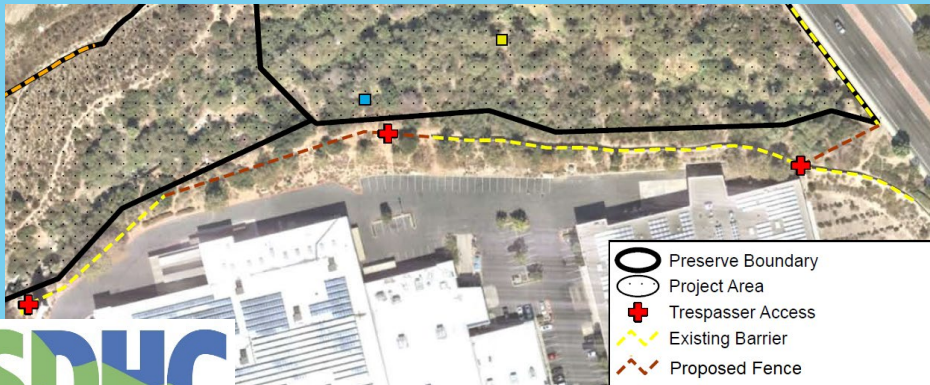
Recently employed East County Transitional Living Center (ECTLC) to perform three days of hand removal.



# Quarry Creek Trespasser Prevention - EMP Grant Update

In 2022, we applied for the SANDAG EMP grant to combat trespassing issues, by proposing to install additional fencing and waste removal along Buena Vista Creek.

Awaiting funding to begin fence installation. Plan to install over 900 linear feet of wrought iron fencing with contributions from Preserve Calavera and Albertsons.



# Quarry Creek – Trash Removal

Continuously removing trash from Buena Vista Creek, including clothes, household products, food containers, furniture, and shopping carts.

Recently employed ECTLC over 3 days to remove over 58 45-gallon bags of trash, 26 shopping carts, and 3 truck loads of trash.



Join us on **April 22<sup>nd</sup>** for a volunteer cleanup as part of I Love A Clean San Diego's **Annual Creek to Bay Cleanup!**

# San Diego Thornmint (*Acanthomintha ilicifolia*) Enhancement Project

## In Collaboration with:

- Native Seed Bank, San Diego Zoo Wildlife Alliance
- Conservation Biology Institute
- The City of Carlsbad
- Center for Natural Lands Management
- San Diego Management and Monitoring Program
- San Diego State University

## Management Strategic Plan Framework Rare Plant Management Plan for Conserved Lands in Western San Diego County



Prepared for  
San Diego Association of Governments

Prepared by  
Conservation Biology Institute and AECOM  
*in collaboration with*  
San Diego Management and Monitoring Program

March 2020

# San Diego Thornmint (*Acanthomintha ilicifolia*) Enhancement Project

Plants grown from seed collected at Carlsbad Raceway Preserve only produced 4 seed. Based on summaries in MSP Rare Plant Management Plan Framework, The Palomar Airport, Carlsbad Raceway and Emerald Pointe Preserves are within the northern genetic cluster.

Sowing seed is recommended from the larger to the smaller populations. CDFW permit request in process.



**San Diego thornmint  
(*Acanthomentha ilicifolia*)  
Photo by Vince Rivas**



# Polyphagous Shot Hole Borer (*Euwallacea* sp.) and Fusarium Dieback (*Fusarium* sp.)

## Laurel Tree Lane (Encinas Creek)

- 2020/2021
  - SHB detected through lure traps in 2020
  - County CAL FIRE Grant, 8 trees removed in 2021 after verification through samples
- 2022
  - Detected again in late 2022
  - Additional 8 trees removed in early 2023



# Vegetation Mapping Updates

Update using the Vegetation Classification Manual for Western San Diego County (AECOM et al. 2011).

Updated mapping in 2022:

- Carlsbad Raceway
- Daybreak
- Sage Creek High School

Scheduled 2023 updates:

- Laurel Tree Lane

# Habitat Management Plan Review and Update

Adaptive management allows long-term management techniques to be modified in response to a changing world. Habitat Management Plans (HMP) for each Preserve are reviewed and updated at least every 5 years to assess for necessary changes in management duties.

This year, SDHC plans to review the HMP for the Carlsbad Raceway Preserve.



# Thank you!

Feel free to contact us at:  
[VinceR@sdhabitat.org](mailto:VinceR@sdhabitat.org) or  
[KathleenP@sdhabitat.org](mailto:KathleenP@sdhabitat.org)

[www.sdhabitat.org](http://www.sdhabitat.org)