



City of Carlsbad

Annual Open Space Status Report for Fiscal Year 2017/2018

July 1, 2017 - June 30, 2018

The table below shows the amount of designated open space acreage by category in each of the Local Facilities Management Zones (LFMZ). This data is current through the end of the Fiscal Year 2017/2018, ending on June 30, 2018.

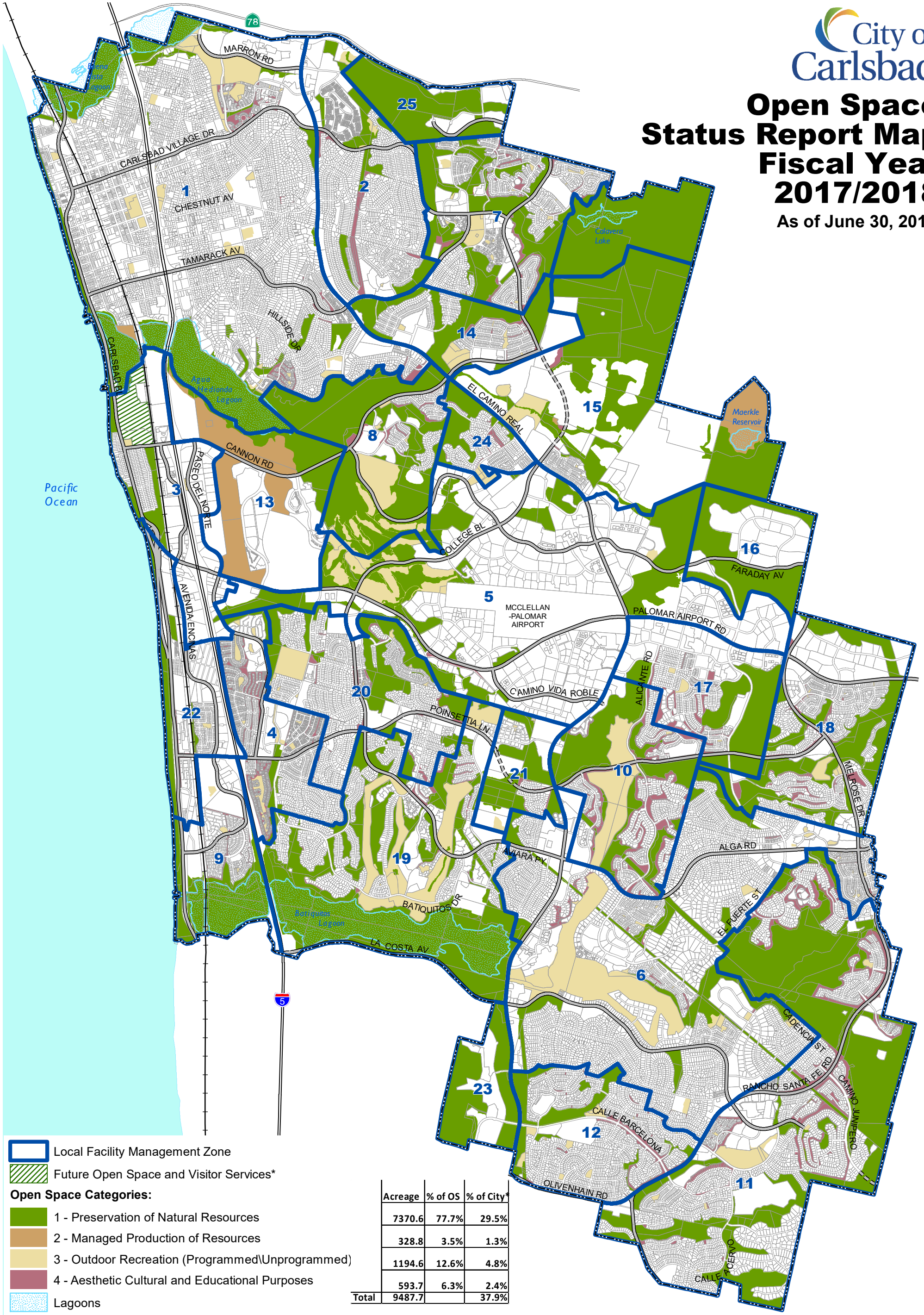
Substantive changes to designated open space occurred in LFMZ 1 and 21 during the fiscal year reporting period. Zone 1 open space increased by 15.4 acres to account for existing Category 1, 3 and 4 open space not previously reported in the inventory. This open space is near Park Drive between Marina Drive and Valencia Avenue. Designated open space in Zone 21 increased by 27.7 acres due to approval of the Poinsettia 61 residential project, located near the unbuilt portion of Poinsettia Lane between Cassia Road and Skimmer Court/Oriole Court.

| | 1 | 2 | 3 | 4 | | | |
|---------------|-----------------------------------|---------------------------------|--|---|-----------------------|--------------------|-----------------------|
| LFMZ | Preservation of Natural Resources | Managed Production of Resources | Outdoor Recreation (Programmed/Unprogrammed) | Aesthetic Cultural and Educational Purposes | Total LFMZ open space | Total LFMZ acreage | Open space percentage |
| 1 | 537.9 | 6.8 | 133.2 | 34.9 | 712.8 | 3,395.5 | 21.0% |
| 2 | 91.9 | | 9.5 | 25.8 | 127.2 | 805.4 | 15.8% |
| 3 | 55.7 | | 3.3 | 0.0 | 59.0 | 625.4 | 9.4% |
| 4 | 32.9 | | 25.3 | 44.6 | 102.8 | 507.8 | 20.2% |
| 5 | 483.1 | | 110.9 | 4.7 | 598.7 | 2,440.0 | 24.5% |
| 6 | 228.5 | | 280.4 | 18.9 | 527.8 | 2,606.9 | 20.2% |
| 7 | 276.9 | | 28.3 | 39.2 | 344.3 | 812.8 | 42.4% |
| 8 | 486.2 | | 94.0 | 13.8 | 594.0 | 743.1 | 79.9% |
| 9 | 195.1 | | 3.9 | 8.7 | 207.8 | 471.6 | 44.1% |
| 10 | 246.8 | | 114.2 | 103.2 | 464.2 | 766.8 | 60.5% |
| 11 | 95.3 | | 16.5 | 25.9 | 137.7 | 660.9 | 20.8% |
| 12 | 919.8 | | 41.9 | 142.1 | 1,103.8 | 2,290.6 | 48.2% |
| 13 | 113.7 | 232.4 | | | 346.1 | 736.9 | 47.0% |
| 14 | 535.0 | | 21.1 | 9.0 | 565.0 | 827.5 | 68.3% |
| 15 | 716.6 | 89.5 | 34.2 | 5.1 | 845.5 | 1,536.3 | 55.0% |
| 16 | 219.7 | | | | 219.7 | 413.7 | 53.1% |
| 17 | 187.7 | | 5.6 | 31.2 | 224.5 | 588.4 | 38.2% |
| 18 | 299.9 | | 14.0 | 30.8 | 344.7 | 899.9 | 38.3% |
| 19 | 788.9 | | 206.5 | 18.7 | 1,014.0 | 1,611.6 | 62.9% |
| 20 | 200.0 | | 34.8 | 22.5 | 257.3 | 805.1 | 32.0% |
| 21 | 108.1 | | 5.5 | 4.5 | 118.0 | 267.4 | 44.1% |
| 22 | 69.2 | | 1.5 | 3.5 | 74.2 | 431.0 | 17.2% |
| 23 | 184.3 | | | | 184.3 | 284.4 | 64.8% |
| 24 | 65.3 | | 10.0 | 6.6 | 81.9 | 199.6 | 41.0% |
| 25 | 232.0 | | 0.1 | | 232.1 | 299.9 | 77.4% |
| Totals | 7,370.6 | 328.8 | 1,194.6 | 593.7 | 9,487.7 | 25,028.4 | 37.9% |

Open Space Status Report Map

Fiscal Year 2017/2018

As of June 30, 2018



- Local Facility Management Zone
- Future Open Space and Visitor Services*
- Open Space Categories:**
- 1 - Preservation of Natural Resources
- 2 - Managed Production of Resources
- 3 - Outdoor Recreation (Programmed/Unprogrammed)
- 4 - Aesthetic Cultural and Educational Purposes
- Lagoons
- City Limits
- Highway
- Major Street
- Planned Street
- Railroad

| | Acreage | % of OS | % of City* |
|--|---------------|---------|--------------|
| 1 - Preservation of Natural Resources | 7370.6 | 77.7% | 29.5% |
| 2 - Managed Production of Resources | 328.8 | 3.5% | 1.3% |
| 3 - Outdoor Recreation (Programmed/Unprogrammed) | 1194.6 | 12.6% | 4.8% |
| 4 - Aesthetic Cultural and Educational Purposes | 593.7 | 6.3% | 2.4% |
| Total | 9487.7 | | 37.9% |

PLEASE NOTE: Open space areas on this map are derived from the San Diego County assessor parcel map from SanGIS.org, which is the best mapping base currently available for a city-wide perspective. However, the parcel lines and the open space areas within them must be considered as approximations only, and are not to be used to establish definitive lines of ownership or land status.

THIS MAP/DATA IS PROVIDED WITHOUT WARRANTY OF ANY KIND, EITHER EXPRESS OR IMPLIED, INCLUDING BUT NOT LIMITED TO, THE IMPLIED WARRANTIES OF MERCHANTABILITY AND FITNESS FOR A PARTICULAR PURPOSE.

GIS parcel data is derived from SanGIS/SANDAG downloadable data - www.sangis.org. Copyright SanGIS 2018.

* Future open space area is not counted in the open space acreage table on this map. For more information, see General Plan Land Use and Community Design Element, 'Special Planning Considerations: Carlsbad Boulevard/Agua Hedionda Center.'