

Center for Natural Lands Management

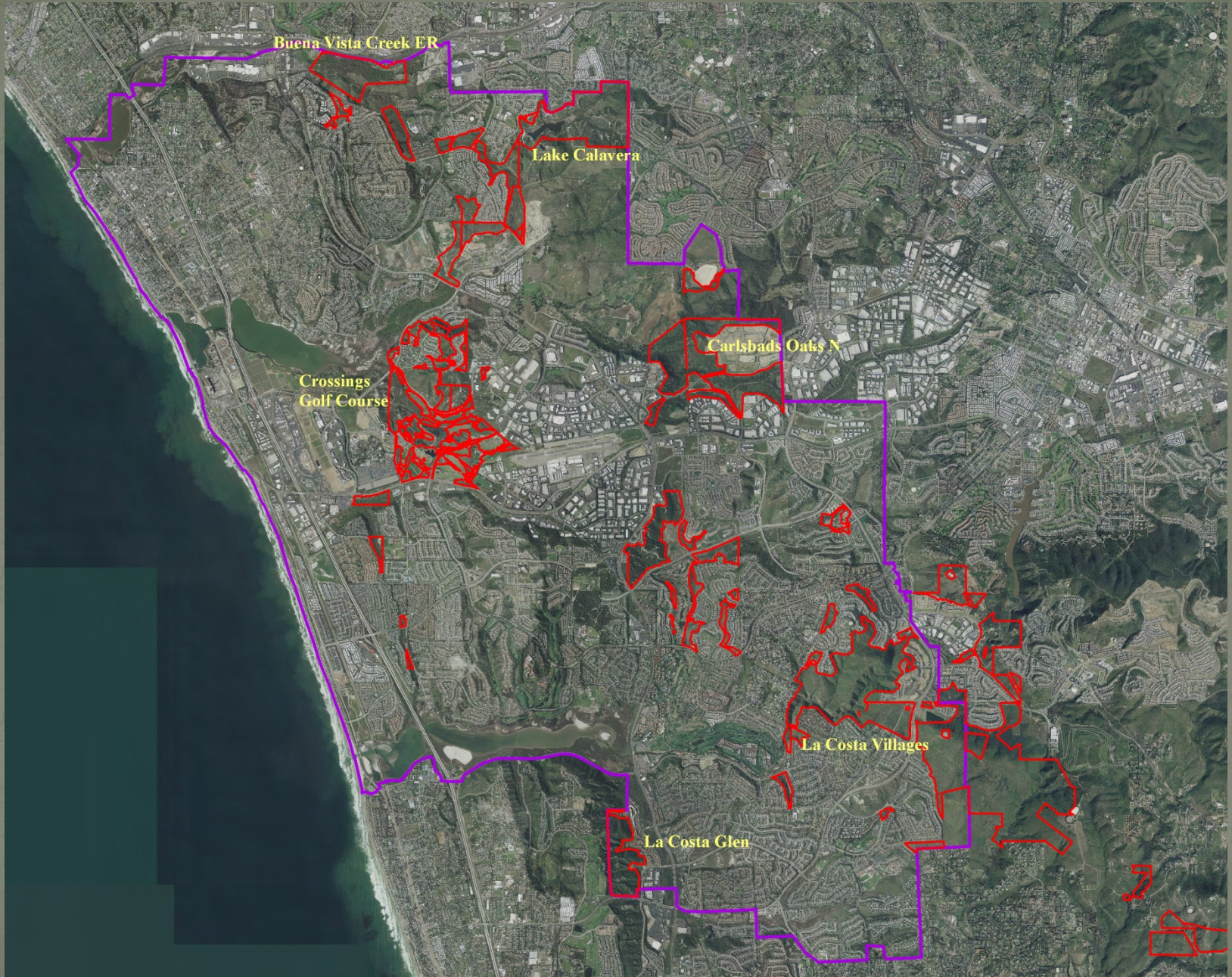
City of Carlsbad 2017 Annual Summary

Markus Spiegelberg, San Diego Regional Preserve Manager
2-27-2018

CNLM is a 501(c)3 nonprofit corporation created to protect and preserve biological resources through the long-term stewardship of mitigation and conservation lands.

Basics about CNLM

- Main office in Temecula, satellite offices throughout California and in Washington State.
- We protect over 75,000 acres state wide.
- Carlsbad:
 - Kelly Ranch
 - Encinas Creek
 - Carlsbad Oaks N
 - Calavera Hills/Roberston Ranch
 - Villages of La Costa/Cassia
 - Buena Vista Ecological Reserve (CDFW)
 - La Costa Glen
 - City of Carlsbad Preserve
 - (Copper Creek, Core Area purchase)
- Three Preserve Managers, Two Environmental Technicians and a Ranger in San Diego



Buena Vista Creek ER

Lake Calavera

Crossings
Golf Course

Carlsbad Oaks N

La Costa Villages

La Costa Glen

Biological Monitoring Summary (2017)



- Sensitive Plant Species Monitoring
 - Thread-leaved brodiaea
 - San Diego thornmint
 - Orcutt's hazardia
 - Blochman's dudleya
 - Del Mar manzanita (burn area)
- CSS Plots + Arg. ants
 - Clay Lens Assessments
- Poinsettia Post-fire Plots
- Adopt-a-Pinch-point
 - Select Monitoring
 - LAG Grant Development
- Wildlife Movement
- PSHB surveys

Management



DIRECTION
314 deg (T)

33.16767°N
117.30623°W

ACCURACY 5 m
DATUM WGS84



Village H

2017-02-10
09:40:24-08:00

- 1000's of nonnative species treated
 - Ward's weed; Veldt grass, etc
- Poinsettia Fire-Burn Area Maintenance
- Copper Creek Eucalyptus removal project
- Village H Restoration
 - PC Eucalyptus Clean Up
- Eagle Project (Wildlife Corridor)
- 100's of hours of patrols
- Cowbird trapping (GC)

CNLM-2018 Onward...

- Patrols and Site Protection
 - Increased use and urban density=increased patrols
- Habitat and Species Monitoring
 - CSS+Ants
 - Continue Sensitive Plants Monitoring
 - Increase Population #'s of select species
 - San Diego Thornmint
 - Orcutt's Hazardia
 - Box Thorn
 - Cliff Spurge
 - Sensitive Wildlife
 - San Diego Horned Lizard
 - Mule Deer
 - Western Pond Turtle

CNLM-2018 Onward...

- Habitat Enhancement
 - Enhance Coastal Sage Scrub?
 - Enhance Nonnative Grassland/Native Forb Area
 - Develop target community composition
 - Enhance specific areas-CON; BVCER; CH/RR
 - Prep Habitat for WPT
- Wildlife Movement
 - Continue Adopt-A-Pinch-point
 - Continue to work with Regional Monitoring Efforts
 - Develop Focused Studies
 - Mule Deer-radio collaring etc.