

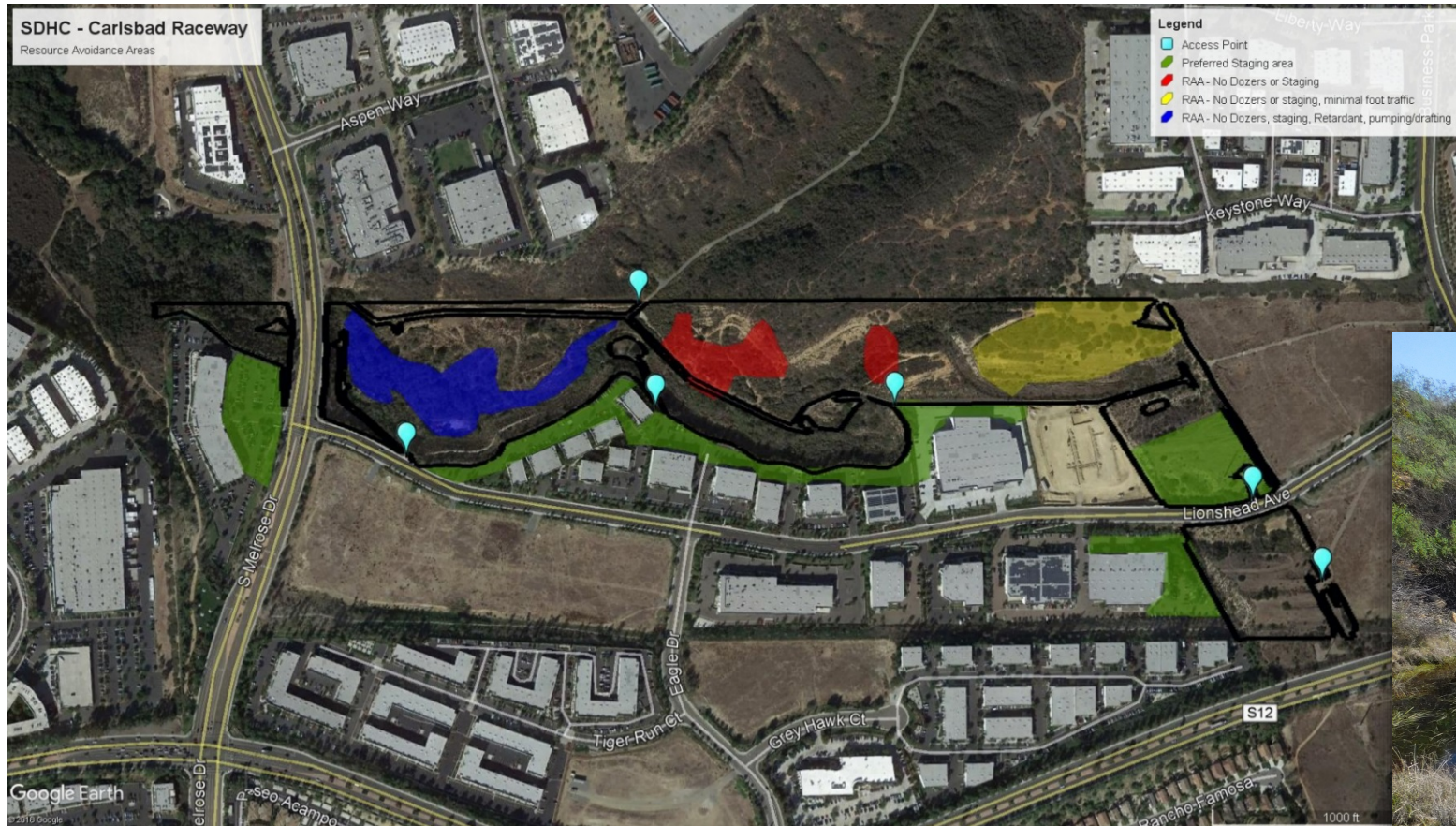


Austin Parker

[Austinp@sdhabitat.org](mailto:Austinp@sdhabitat.org)

(619) 365-4839

# Carlsbad Raceway



# *Acanthomintha ilicifolia*

- Carlsbad Raceway
  - 9 Individuals found
  - Invasive plants
  - Rattlesnake



# Emerald Pointe



# *Acanthomintha ilicifolia*

- Emerald Pointe
  - 22 Individuals found
  - Erosion issues



# Quarry Creek



SDHC\_DataCollection

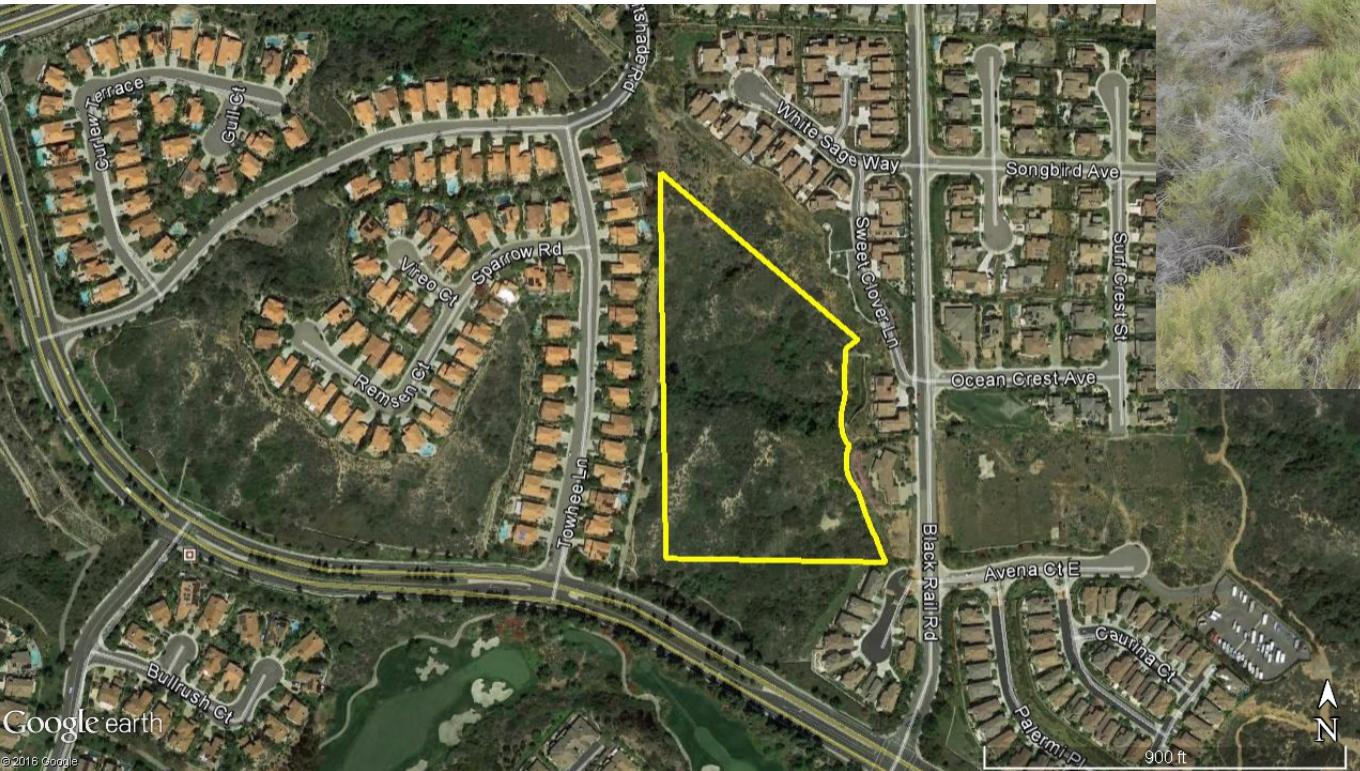


Update 6/10/2018

600ft

USDA FSA, DigitalGlobe, CNES/Airbus DS

# Muroya

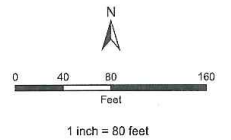


# Sonata



## Legend

- Project Site
- Easement Boundary
- Existing Streambed (551 lf.)
- Enhancement - Brodiaea Planting Area (0.10 ac.)
- Enhancement - Brodiaea Management Buffer Area (0.33 ac.)
- Enhancement - Alkali Marsh (0.26 ac.)
- Enhancement - Grassland (0.78 ac.)
- Enhancement - Southern Willow Scrub (0.10 ac.)
- Preservation - Alkali Marsh (0.47 ac.)
- Preservation - Freshwater Marsh (0.05 ac.)
- Preservation - Southern Willow Scrub (0.89 ac.)



Aerial Photo: ESRI Basemap  
 Date Prepared: October 5, 2012  
 Prepared by: K. Kartunen, GLA

**LA COSTA TOWN SQUARE**  
 Proposed Mitigation Areas

GLENN LUKOS ASSOCIATES

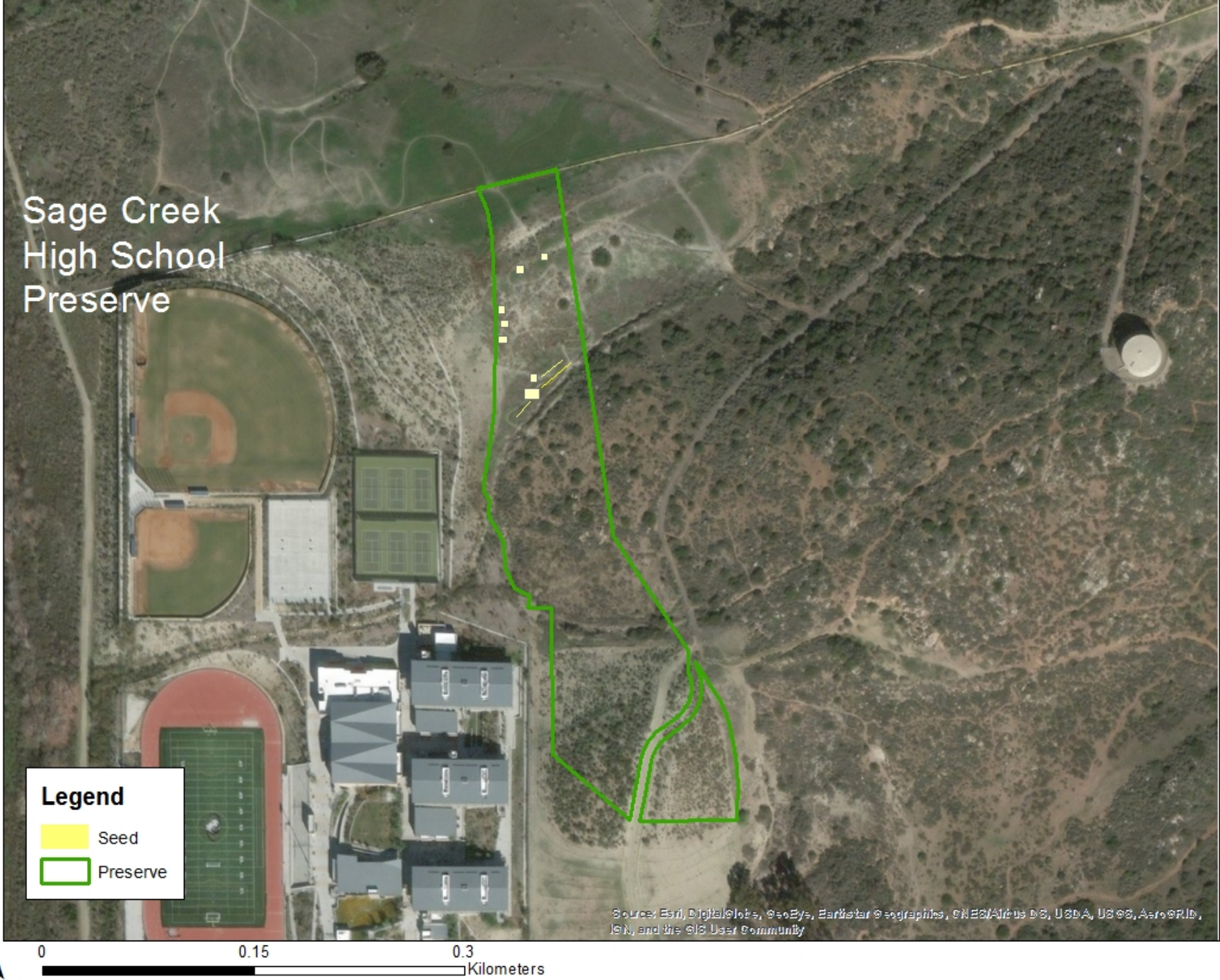




# Laurel Tree Lane



# Sage Creek High School





Sage Creek High School Preserve  
~ Seeding



Sdhabitat.org

(619) 365 4839

[AustinP@sdhabitat.org](mailto:AustinP@sdhabitat.org)

[DonS@sdhabitat.org](mailto:DonS@sdhabitat.org)

[KathleenP@sdhabitat.org](mailto:KathleenP@sdhabitat.org)

