



Habitat Management Plan 19th Annual Public Meeting

Environmental Sustainability Department
March 5, 2024
10:00 am - 12:00 pm



Housekeeping Items

- The meeting will be recorded
- Please keep cameras off and microphones muted
- The recording will be posted on the city's website

[Google: Carlsbad HMP Reports and Studies](#)



Meeting Format

- Habitat Management Plan Overview + Monitoring Report Summary
- Preserve Manager Presentations
- Q&A after each presentation as time permits
- Type questions in Chat or raise the hand icon



Native pollinator

Contact: Rosanne.Humphrey@carlsbadca.gov

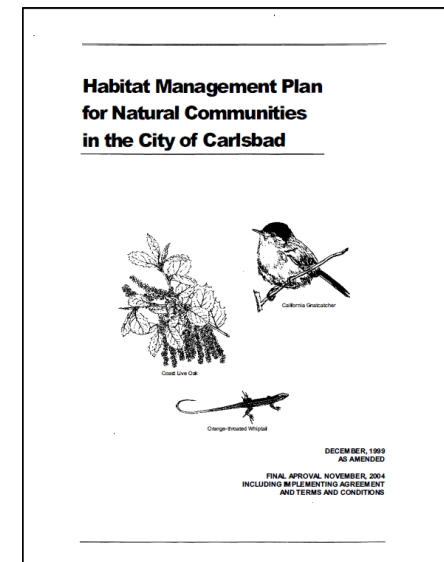
Habitat Management Plan (HMP)

1. Citywide conservation program

- ❖ Ecosystem-level plan
- ❖ Science-based, adaptive management and long-term biological monitoring

2. Regulatory document

- ❖ Multiple Habitat Conservation Program
- ❖ State/Federal Endangered Species Acts
- ❖ NCCP/HCP Plan

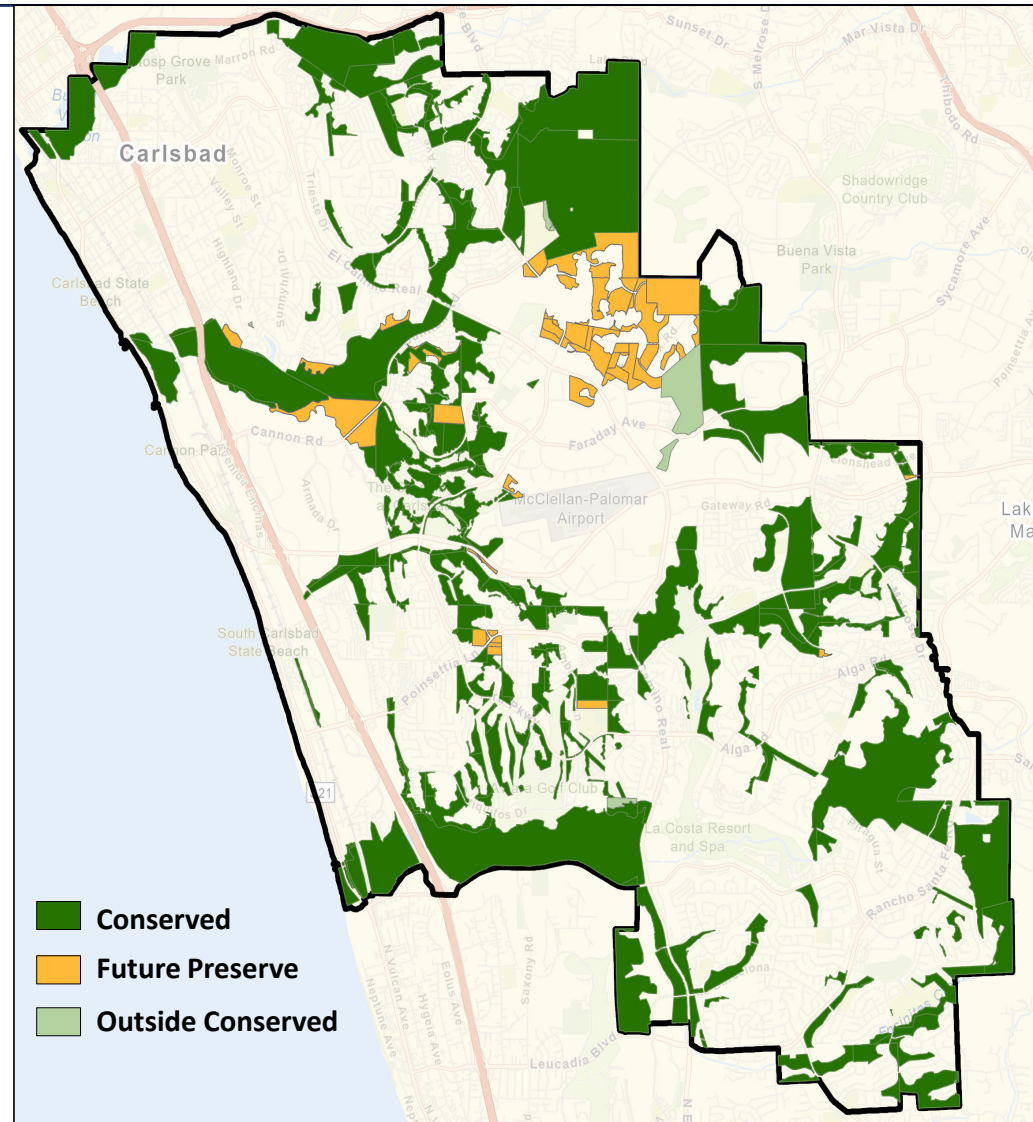


November, 2004

Habitat Management Plan (HMP)

Goals

- Conserve all native habitat types and “covered” sensitive species long-term
- Establish core habitat areas and wildlife movement corridors
- Allow continued economic growth and development
- Compatible recreation/public use



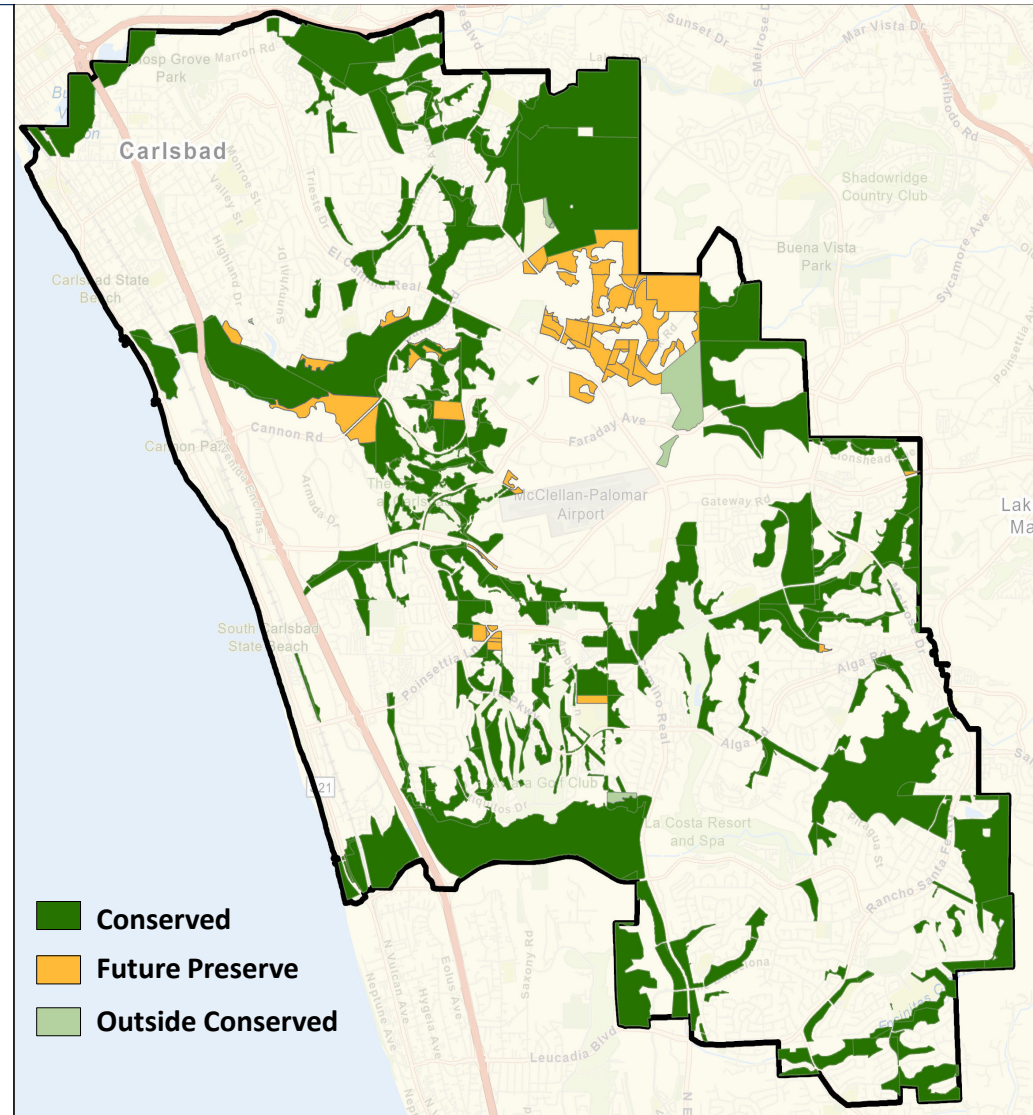
Habitat Management Plan (HMP)

Preserve System Status

- Required Acreages : 6,478 acres
- Currently at 6,208 acres
= 96% towards target

New Interactive HMP Map

Carlsbadca.gov/HMPInteractiveMap

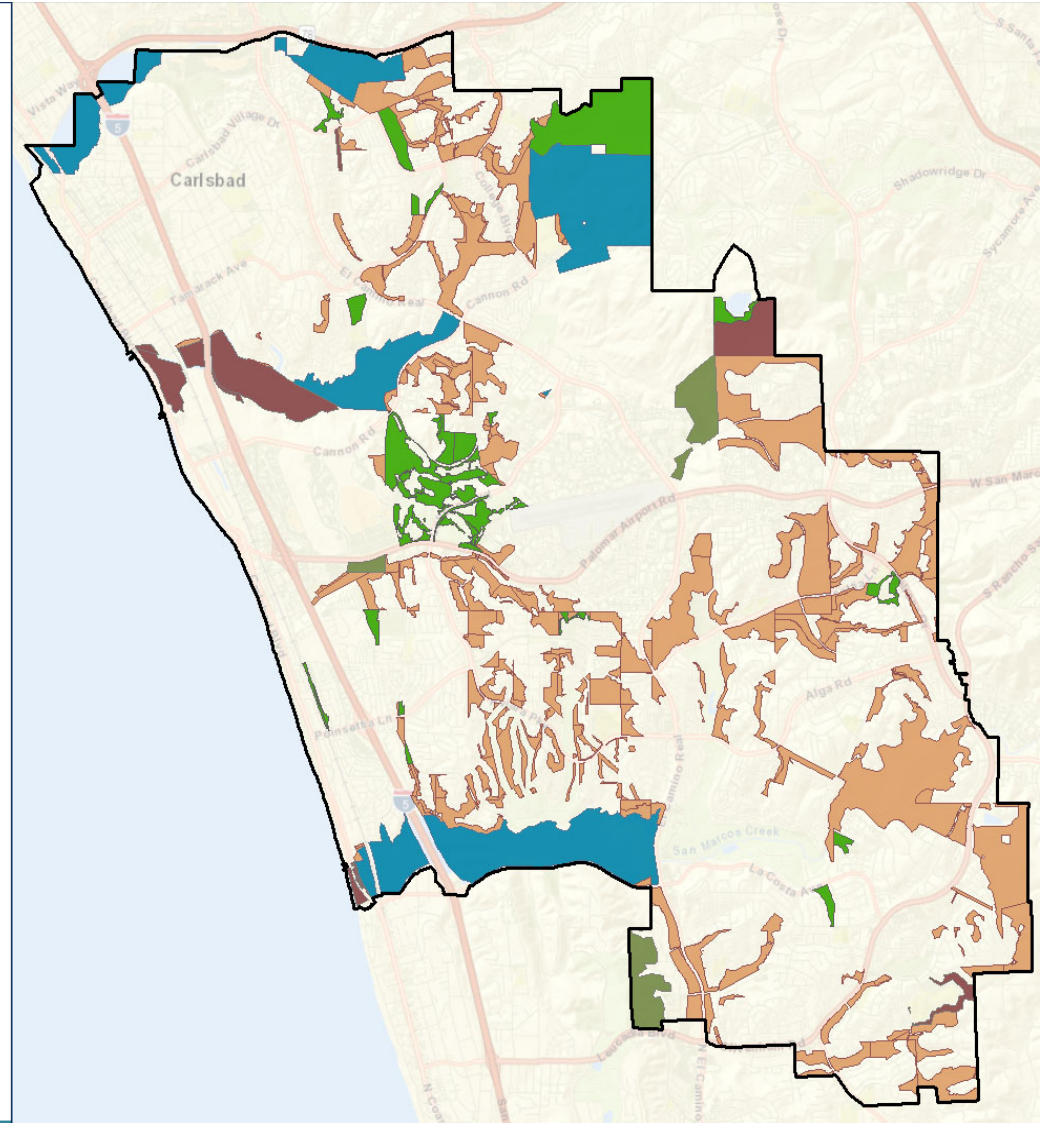
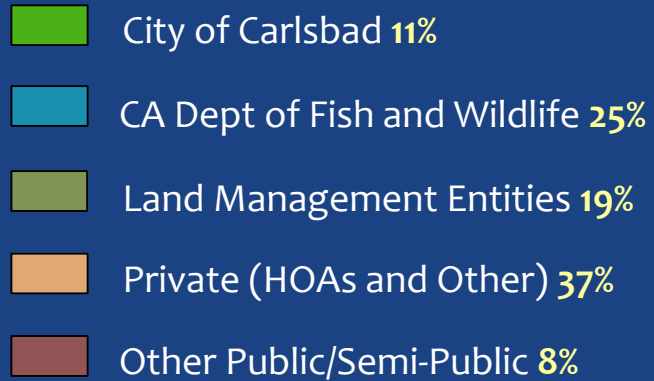


Habitat Management Plan (HMP)

Land ownership

- Started with pre-existing preserves
- Post-HMP: new preserves added through development process

Landowners

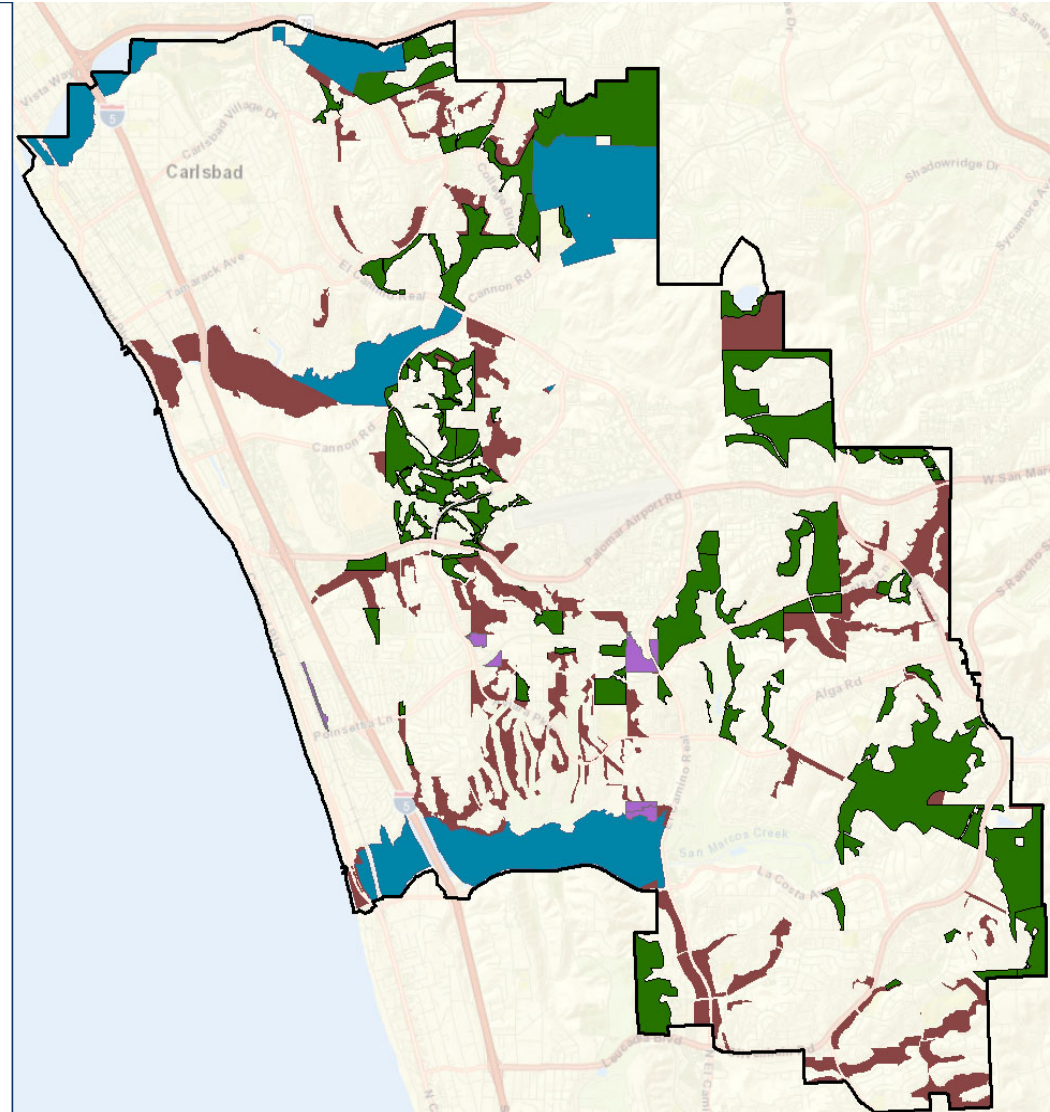
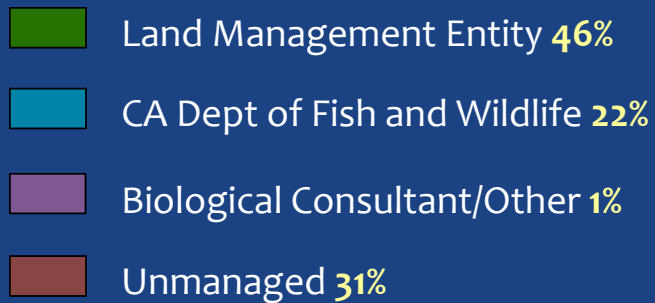


Habitat Management Plan (HMP)

Land Management

- Pre-HMP preserves: mostly unmanaged
- Post-HMP: CDFW; non-profit land managers, mostly CNLM, SDHC, and UC

Land Managers



Triennial HMP Biological Monitoring Report

Main goal of HMP

Conserve and manage viable populations of native plant and animal species and their habitats, while accommodating continued economic development and quality of life.

- Monitoring is a mandatory element of the HMP
- Long-term monitoring summarized and reported every 3 years
- Overview and a few highlights

Triennial HMP Biological Monitoring Report

Compliance Monitoring

- HMP-related Municipal Code
- Assemble preserve of 6,478 acres
- Track and report habitat gains and losses
- Require all projects to adhere to HMP standards and mitigation measures

Effectiveness Monitoring

- How effective is preserve design and HMP implementation?
- Much more complicated
- Species, vegetation communities
- Threats (stewardship)
- Other: wildlife movement, pollinators, species biology, etc.

Triennial HMP Biological Monitoring Report

Scale

- Preserve-level
- Citywide
- Regional

Vegetation (Habitats)

- Remap every 5 years
- Qualitative
- Quantitative

Species

- Via habitat (habitat ok = species ok)
- Species-level (focused surveys)
 - Status (presence/absence)
 - Distribution
 - Abundance
- Species biology



Species that require focused monitoring



Narrow Endemic Species

- San Diego thornmint
- Del Mar manzanita
- Encinitas baccharis
- Thread-leaved brodiaea
- Del Mar Mesa sand aster
- Orcutt's hazardia
- Nuttall's lotus

Lagoon species

- Ridgeway rail
- Western snowy plover
- California least tern
- Belding's savannah sparrow

Vernal Pool Species

- San Diego button-celery
- Little mousetail
- Spreading navarretia
- California Orcutt grass
- San Diego fairy shrimp
- Riverside fairy shrimp

Other Species

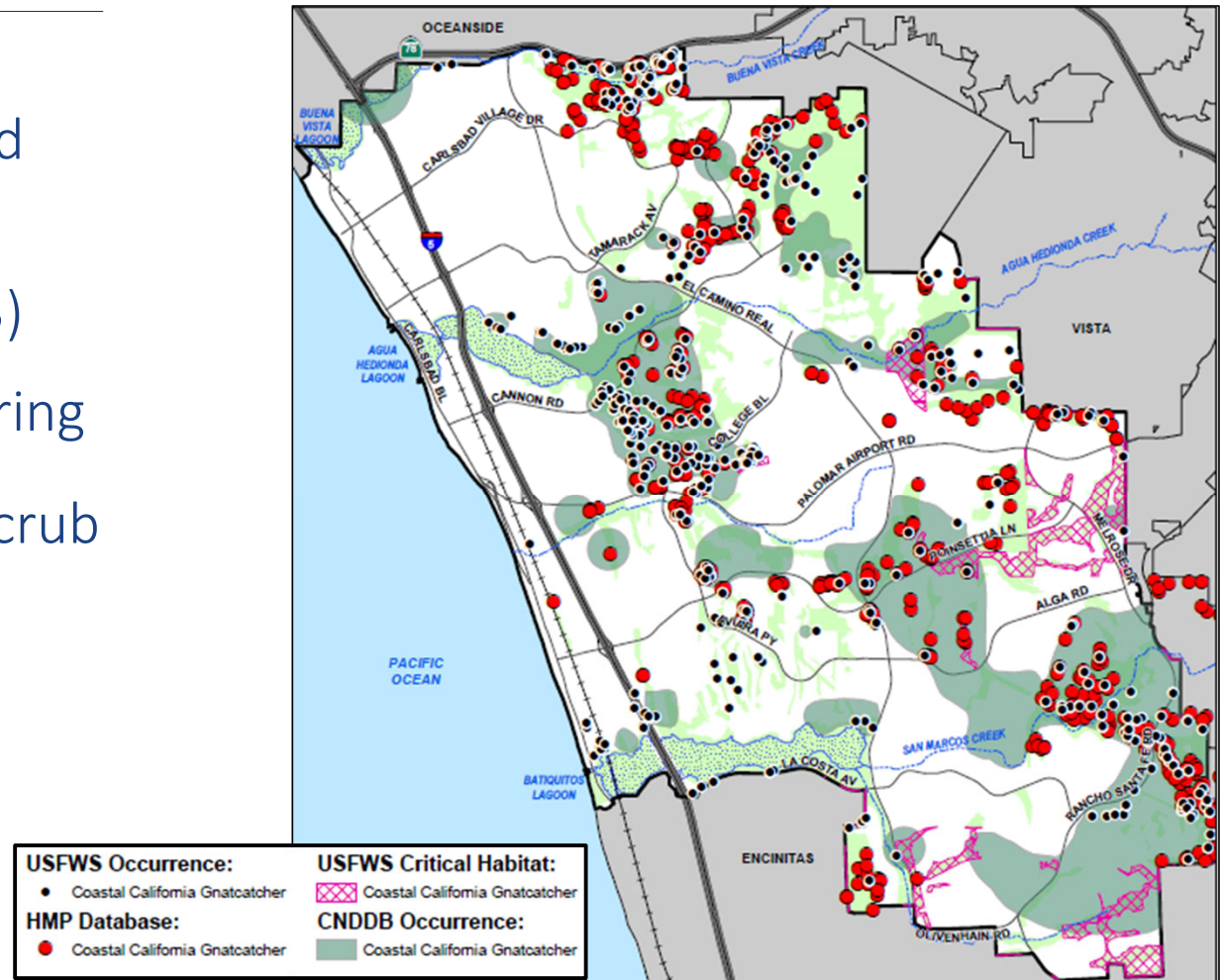
- Least Bell's vireo
- Southwestern willow flycatcher
- Coastal California gnatcatcher

Triennial HMP Monitoring Report

- Flagship species that started HMP Program
- Federally Threatened (1993)
- Citywide long-term monitoring
- Restricted to coastal sage scrub

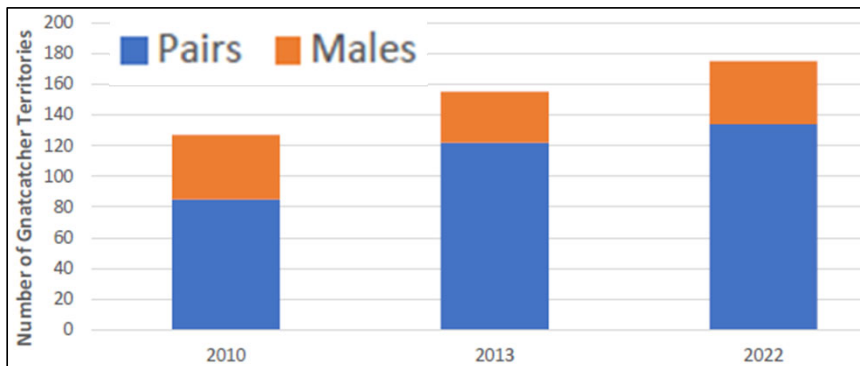


Coastal California Gnatcatcher



Triennial HMP Monitoring Report

Coastal California Gnatcatcher

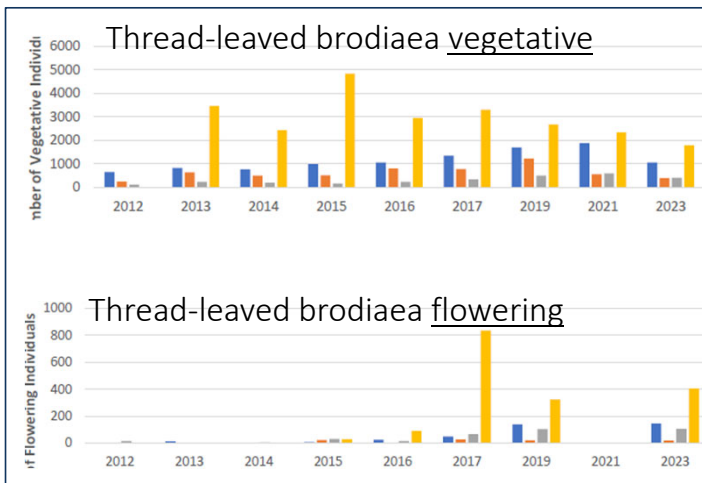
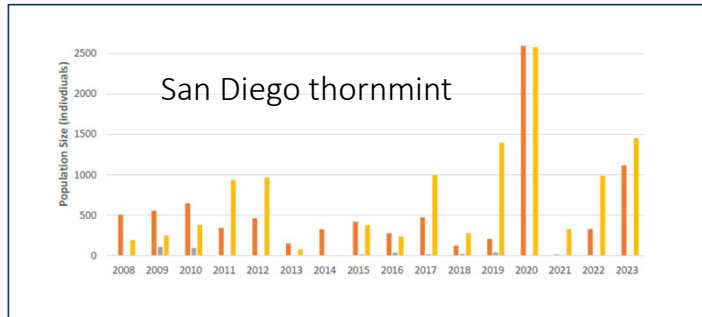


Citywide coordinated surveys

- Stable or increasing
- Found in all patch sizes
- Small patches can provide stepping stones for dispersal and refugia after catastrophic events such as fire

Year	Acres Surveyed	Pairs	Single Males
2010	1,805	85	42
2013	1,985	122	33
2022	2,060	134	41

Triennial HMP Monitoring Report



Endemic Plant Species

Key Points

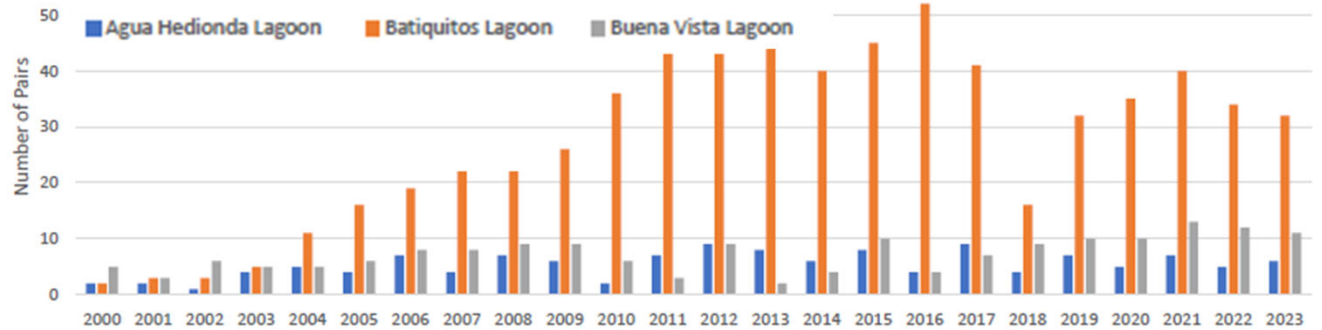
- Difficult to determine trend/status
- Annual and bulb/corm species vary significantly year to year
- Our focus is:
 - Protect the land and reduce the threats (weeds, trespass, illegal trails, etc.)
 - Monitor for presence/absence

Triennial HMP Monitoring Report

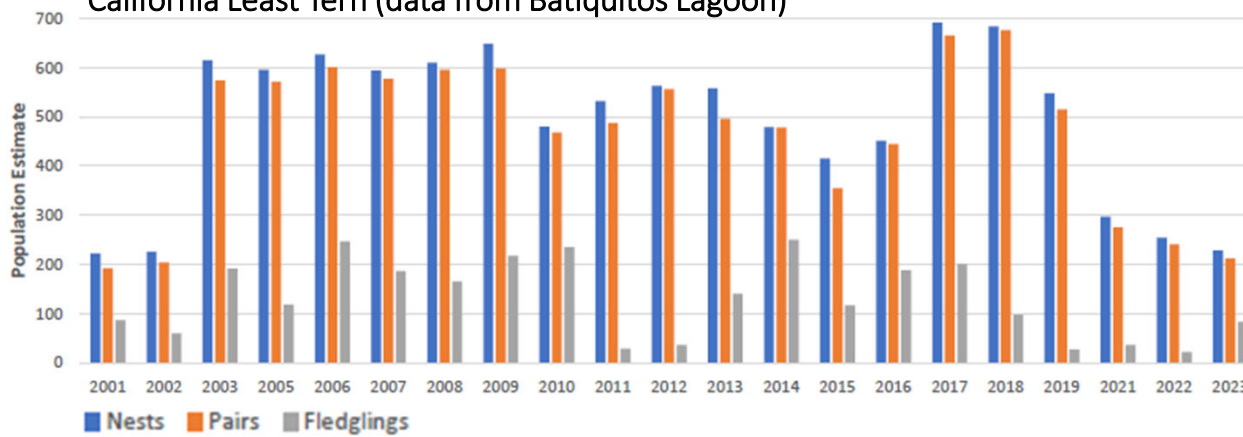
Lagoon Species



Light-footed Ridgeway Rail

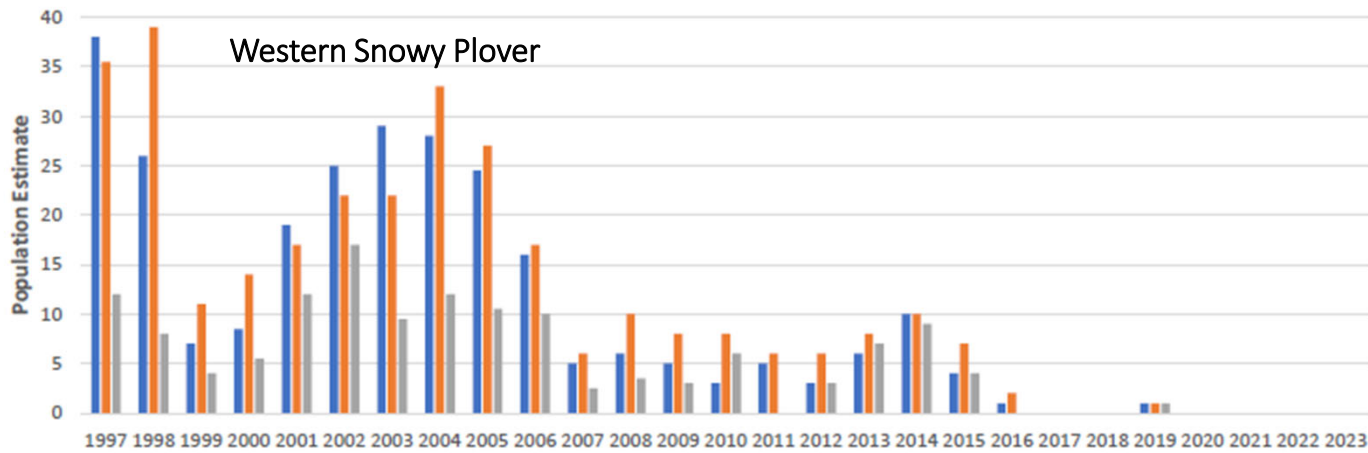
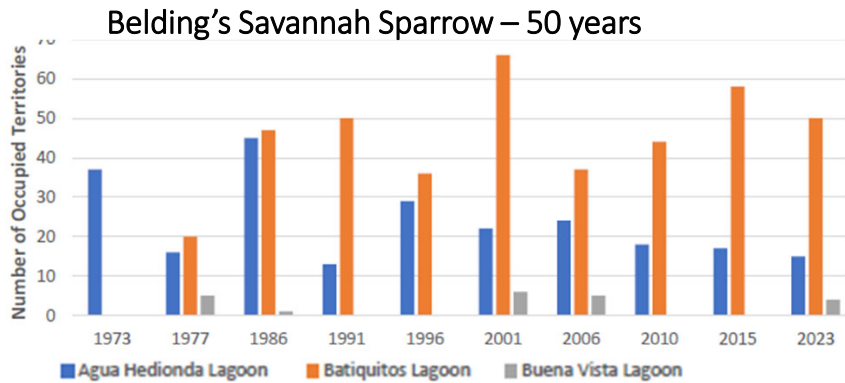


California Least Tern (data from Batiquitos Lagoon)



Triennial HMP Monitoring Report

Lagoon Species



Key Points

- On lands owned by CDFW
- Statewide surveys by CDFW since 1973 for some species (50 years of data!)
- Local trends often similar to state trends, but not always
- Populations are highly variable
- Can be very difficult to know what causes population declines, especially with migrating species
- Our focus is to reduce the threats to ensure successful reproduction
- **Threats:** predators, human trespass, off-leash dogs, freshwater incursion into saltwater marsh, invasive plants,

Triennial HMP Monitoring Report

Dog Waste Study

[Interactive online map is available \(see HMP Annual Report\)](#)

Carlsbad Village H South

- Important wildlife movement corridor
- Presence of dogs and people can deter wildlife
- Bags and trash cans have been provided
- How much dog waste is being left behind by trail users?
- Does it get better over time?
- Is this happening on all of our trails?





Questions?

- Annual report, presentations and meeting recording will be posted on city's website
- Google: Carlsbad HMP Reports & Studies

Contact: Rosanne.Humphrey@carlsbadca.gov