

Land Management Updates HMP Annual Meeting



Vince Rivas and Galen Reid
Habitat Managers

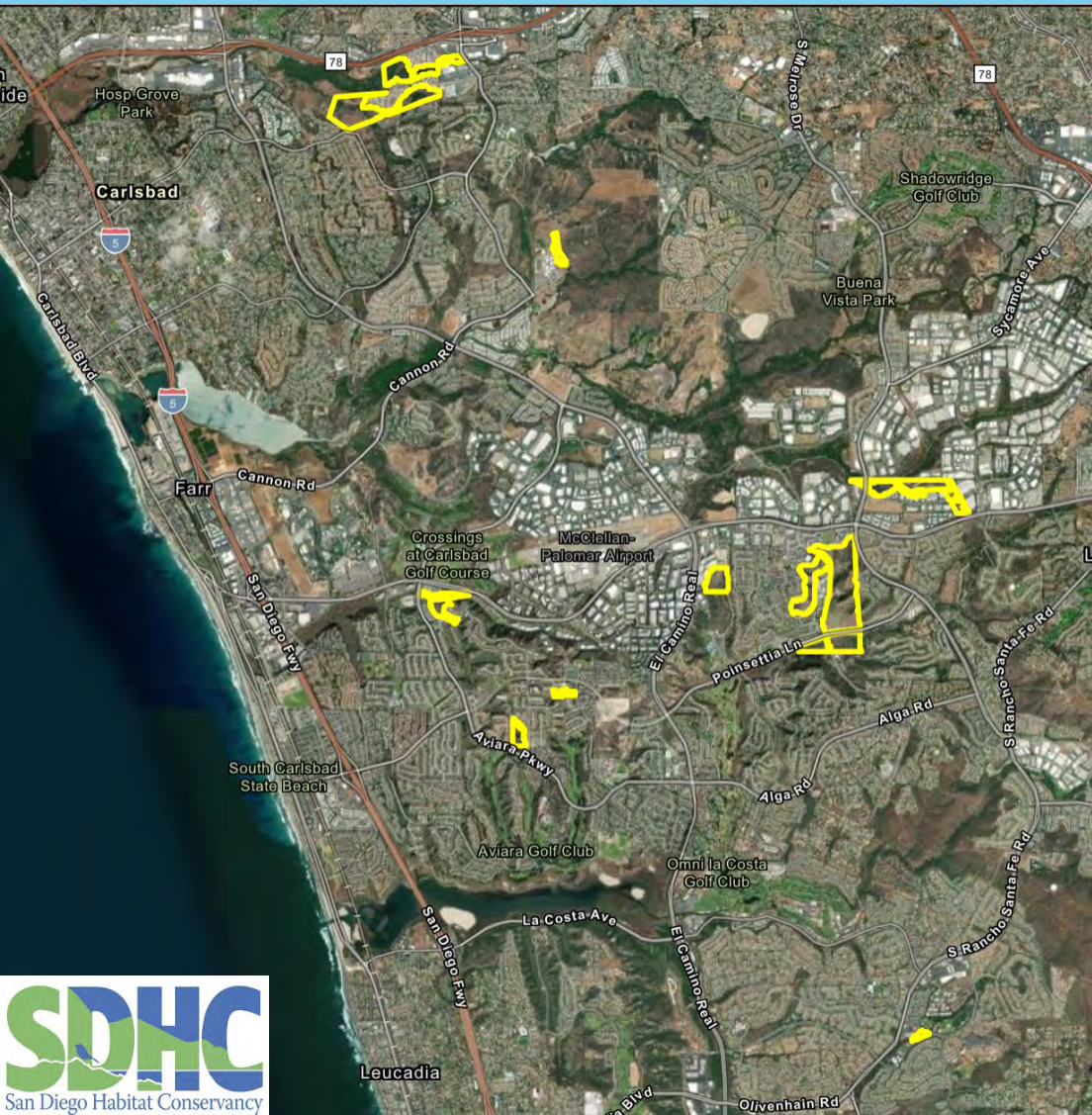
March 5, 2024

Open Space Preserves Managed by SDHC

Over 2,000 acres of managed open space land.

34 active preserves throughout the County. Nine active preserves in Carlsbad (over 390 acres), one Under Contract, and six Pending:

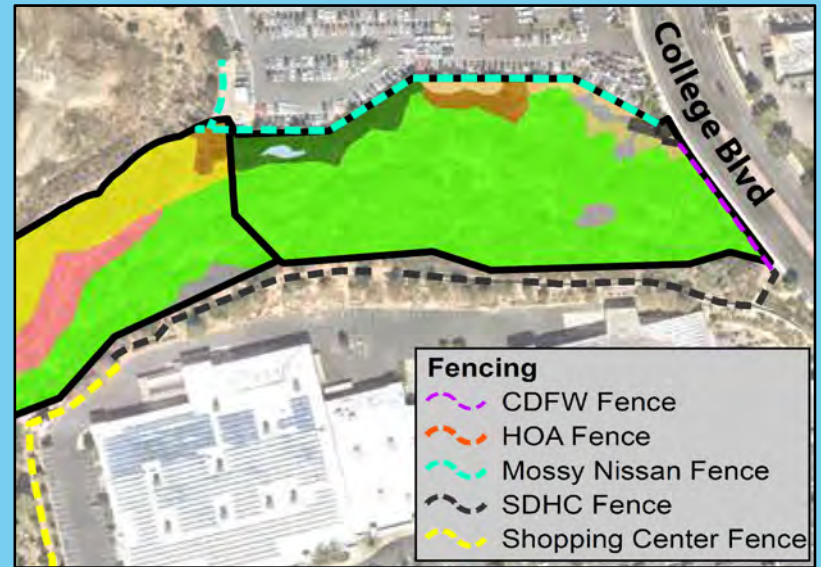
- Bressi Ranch
- Carlsbad Raceway
- Daybreak
- Emerald Pointe
- Laurel Tree Lane
- Muroya
- Quarry Creek
- Sage Creek High School
- Sonata
- Poinsettia 61 (under contract)



Quarry Creek Trespasser Prevention - EMP Grant Update

In 2023, we utilized funds from the SANDAG EMP grant and donations from Preserve Calavera, Albertsons, and RG Investment to install 962 feet of fencing along Buena Vista Creek.

Area was significantly impacted by trespasser use. Additional barriers will help prevent habitat disturbance and pollution. Security patrols and fence repairs are ongoing.



Quarry Creek – Trash Removal

Hosted two volunteer cleanups during 2023 with Preserve Calavera and the City of Oceanside as part of I Love A Clean San Diego's annual cleanup events in April and September.

Over 100 volunteers attended each event, removing over 5,000 pounds of trash, recyclables, and hazardous waste from the creek!



San Diego Thornmint Enhancement Project Update

Additional SANDAG EMP grant project to enhance the populations of San Diego thornmint (*Acanthomintha ilicifolia*) at Carlsbad Raceway and Emerald Pointe.

In December 2023, we installed fencing to prevent herbivory at the two preserves and seeded both areas with seed collected from a nearby donor site.



San Diego thornmint seedling at Emerald Pointe in February
Photo by Jesse Vinje



San Diego Thornmint Enhancement Project Update

During 2024, SDHC will continue to monitor and maintain the seeded populations, with a focus on invasive plant control and additional seed collection and dispersal.

Collaborative effort with SDMMP, Native Seed Bank (SD Zoo Wildlife Alliance), Conservation Biology Institute, CNLM, and SDSU



San Diego thornmint
(*Acanthomentha ilicifolia*)
Photo by Vince Rivas

Shot Hole Borer (*Euwallacea* sp.) + Fusarium Dieback Testing and Management



First identified in Los Angeles county in 2003, rapid spread after 2012. Southeast Asian Origin. Attacks 137 species of native, ornamental and invasive trees. Spreads Fusarium fungus. More information at PSHB.ORG



Has been especially detrimental to wetland riparian habitats. With majority of infestations upon California Sycamore, Willows, and Cottonwoods



Shot Hole Borer (*Euwallacea* sp.) + Fusarium Dieback Testing and Management



From 2018 to present, SDHC has managed an infestation upon arroyo willows and western cottonwoods at our Laurel Tree Lane Preserve. Managers worked with San Diego County for a grant to chip and remove infected trees. Eight trees were diagnosed with Fusarium dieback and removed in 2022 and seven removed in 2023.

Habitat managers assemble and place a series of bottle traps using quercivorol (plant-based chemical) as a lure. Trapped beetles are identified at the San Diego Weights and Measures Office. Wood samples are also analyzed for Fusarium fungal infection.



Shot Hole Borer (*Euwallacea* sp.) + Fusarium Dieback Testing and Management

Managers will continue to set and check traps through 2024 and afterwards. Wetland rehabilitation at the site will include arroyo willow and cottonwood plantings potentially combined chemical or biological treatments (currently in the research and developments stage) as applicable.



Laurel Tree Lane
treatment area
post-removal
2023



Habitat Management Plan Review and Update

Adaptive management allows long-term management techniques to be modified in response to a changing world. Habitat Management Plans (HMP) for each Preserve are reviewed and updated at least every 5 years to assess for necessary changes in management duties.

This year, SDHC plans to review the HMPs for the following preserves:

- Muroya
- Quarry Creek



A scenic landscape featuring a hillside with sparse vegetation and a few buildings in the distance. In the foreground, there is a pond surrounded by a variety of plants, including tall grasses, yellow flowers, and purple flowers. The sky is blue with scattered white clouds.

Thank you!

Feel free to contact us at:
VinceR@sdhabitat.org or
GalenR@sdhabitat.org

www.sdhabitat.org