



CARLSBAD HMP ROUNDUP

PRESENTED BY:

Ali Kalinowski – California Department of Fish and Wildlife

Our Mission

To manage California's diverse fish, wildlife, and plant resources, and the habitats upon which they depend, for their ecological values and their use and enjoyment by the public.

Habitat Management Plan for Natural Communities in the City of Carlsbad



Coast Live Oak



California Gnatcatcher



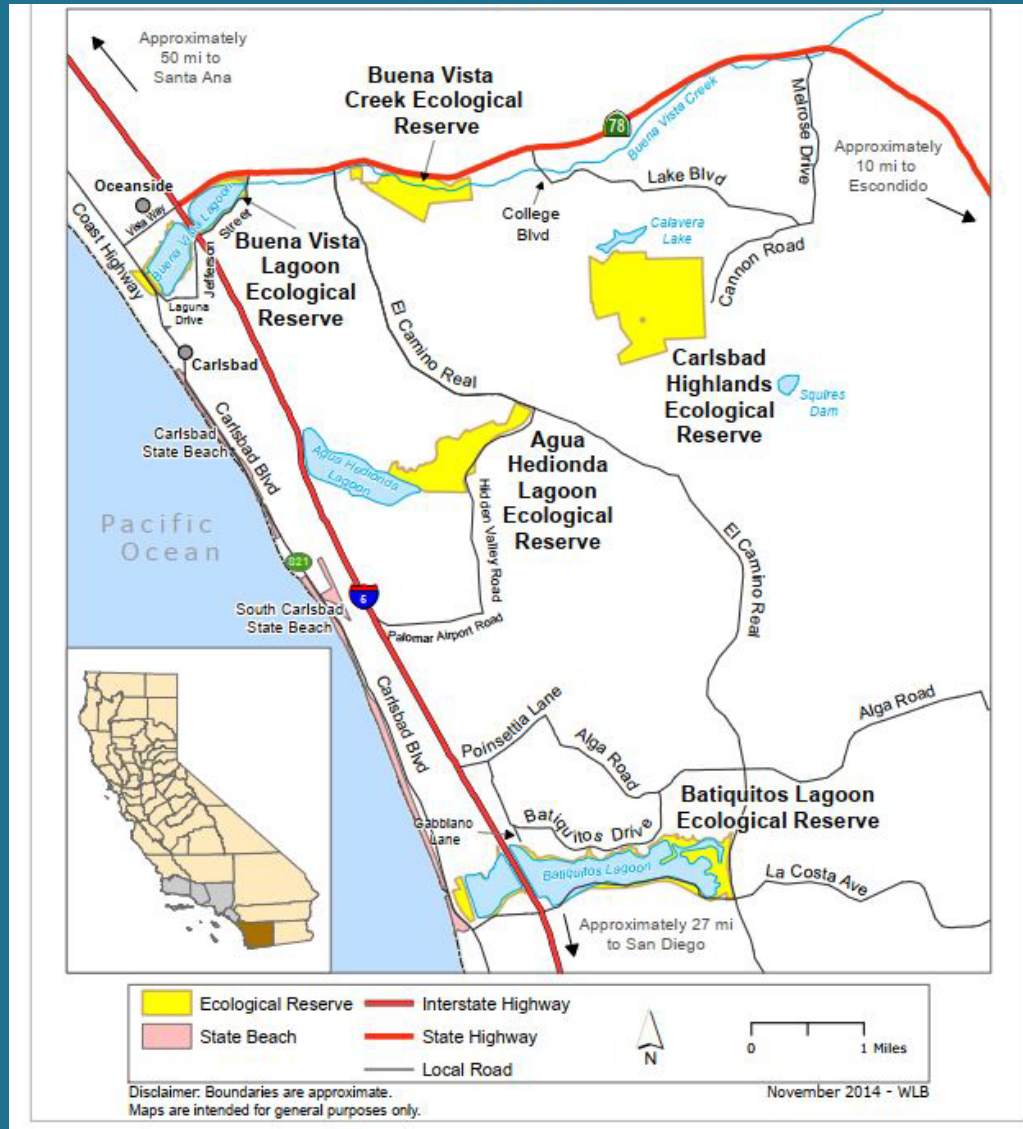
Orange-throated Whiptail

DECEMBER, 1999
AS AMENDED

FINAL APPROVAL NOVEMBER, 2004
INCLUDING IMPLEMENTING AGREEMENT
AND TERMS AND CONDITIONS

CDFW Properties in Carlsbad

- Batiquitos Lagoon Ecological Reserve
- Agua Hedionda Lagoon Ecological Reserve
- Buena Vista Lagoon Ecological Reserve
- Buena Vista Creek Ecological Reserve
- Carlsbad Highlands Ecological Reserve
- Other lands



- Buena Vista Creek Ecological Reserve
- Carlsbad Highlands Ecological Reserve
- Batiquitos Lagoon Ecological Reserve
- Other lands

Batiquitos Lagoon Ecological Reserve

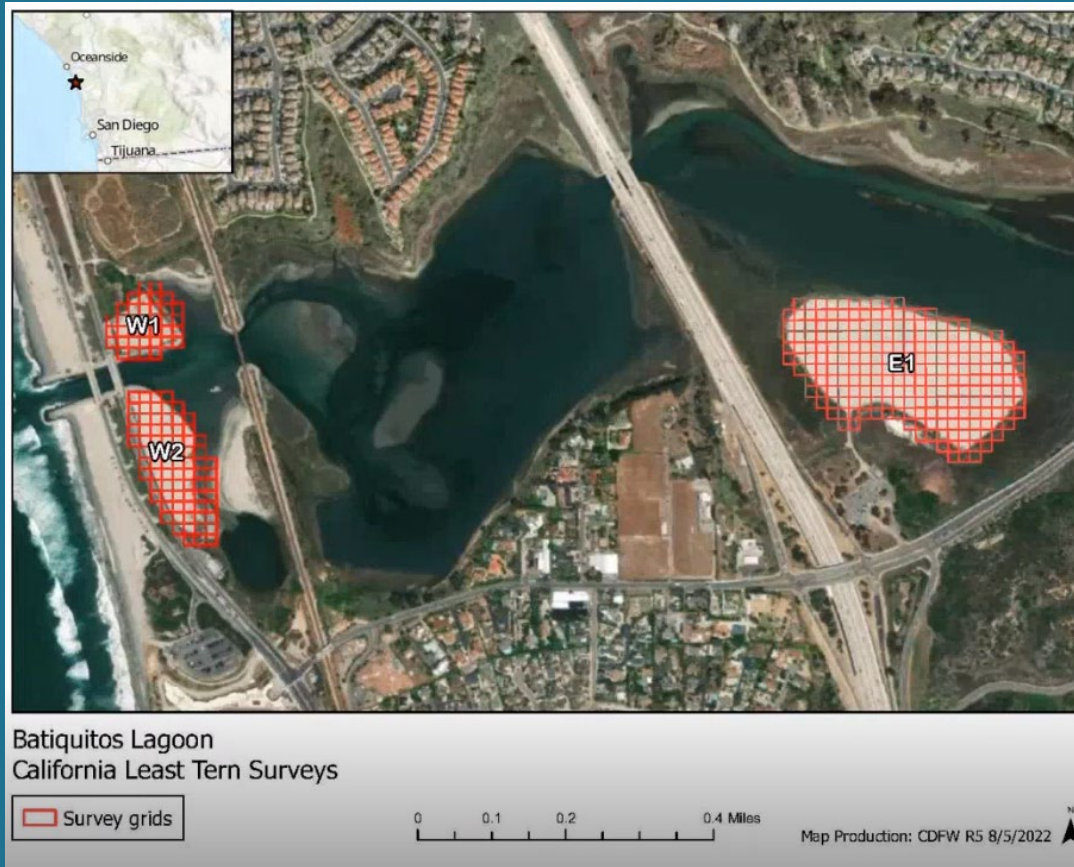


Photo by Matt Boud

Nesting Subsite	Acreage
W1	2 acres
W2	4 acres
E1	17 acres

California least tern (*Sterna antillarum browni*)



Federally Endangered,
State Endangered
State Fully Protected

New California Least Tern (CLTE) Layer: Biogeographic Information Observation System (BIOS)

- BIOS is CDFW's repository of biogeographic spatial data
- Facilitates data sharing between CDFW, Partner Organizations, and the public.

The screenshot displays the BIOS web application interface. The top navigation bar includes the BIOS logo, a search bar, and links for Register, Login, Contents, BIOS Data, and Tools. The main content area is divided into a left sidebar, a central map, and a right sidebar. The left sidebar shows the 'Contents' panel with the 'Active Layer' set to 'California Least Tern Monitoring Sites Generalized - CDFW [ds3146]'. Below this are sections for 'Graphics Layers', 'External Layers', 'BIOS Layers', and 'Reference Layers'. The central map shows a satellite view of the California coast with several green hexagonal markers indicating monitoring sites. The right sidebar features an 'Identify Features' panel with a search bar and a 'Clear Identified' button. Below the map, a table displays the data for the selected layer.

OBJECTID	Site_ID	Site_Name	Region	YEAR	ANNUAL_REPORT_SITE_NAME	CURRENT_SITE_NAME	SITE_NAME_ADDR	REGION	INDEX_SITE	ENSO_EVENT	BP_MIN	BP_MAX	FL_MIN	FL_MAX	TOTAL_NESTS	NONPRED_EGGS	NONPRED_EGGS
1	31	BLER BATIQUITOS LAGOON ECOLOGICAL RESERVE	SOUTHERN	1990	BATIQUITOS LAGOON	BATIQUITOS LAGOON ECOLOGICAL RESERVE	BLER	SOUTHERN	N	NEUTRAL	27	27	28	28	NRNA	NRNA	NRNA
2	31	BLER BATIQUITOS LAGOON ECOLOGICAL RESERVE	SOUTHERN	1991	BATIQUITOS LAGOON: MOUTH, PARK AND RIDE, EAST	BATIQUITOS LAGOON ECOLOGICAL RESERVE	BLER	SOUTHERN	N	NEUTRAL	35	35	32	38	NRNA	NRNA	NRNA
3	31	BLER BATIQUITOS LAGOON ECOLOGICAL RESERVE	SOUTHERN	1992	BATIQUITOS LAGOON, NC, MOUTH	BATIQUITOS LAGOON ECOLOGICAL RESERVE	BLER	SOUTHERN	N	EL_NINO	11	11	3	5	11	NRNA	NRNA

<https://apps.wildlife.ca.gov/bios6/>

Agua Hedionda Ecological Reserve



Invasive Algerian sea lavender
(*Limonium ramosissimum*)



Buena Vista Lagoon Ecological Reserve

western snowy plover
(*Charadrius alexandrinus nivosus*)



Federally Threatened

light-footed Ridgway's rail
(*Rallus obsoletus levipes*)



Federally Endangered,
State Endangered

Feral cat feeding bowls



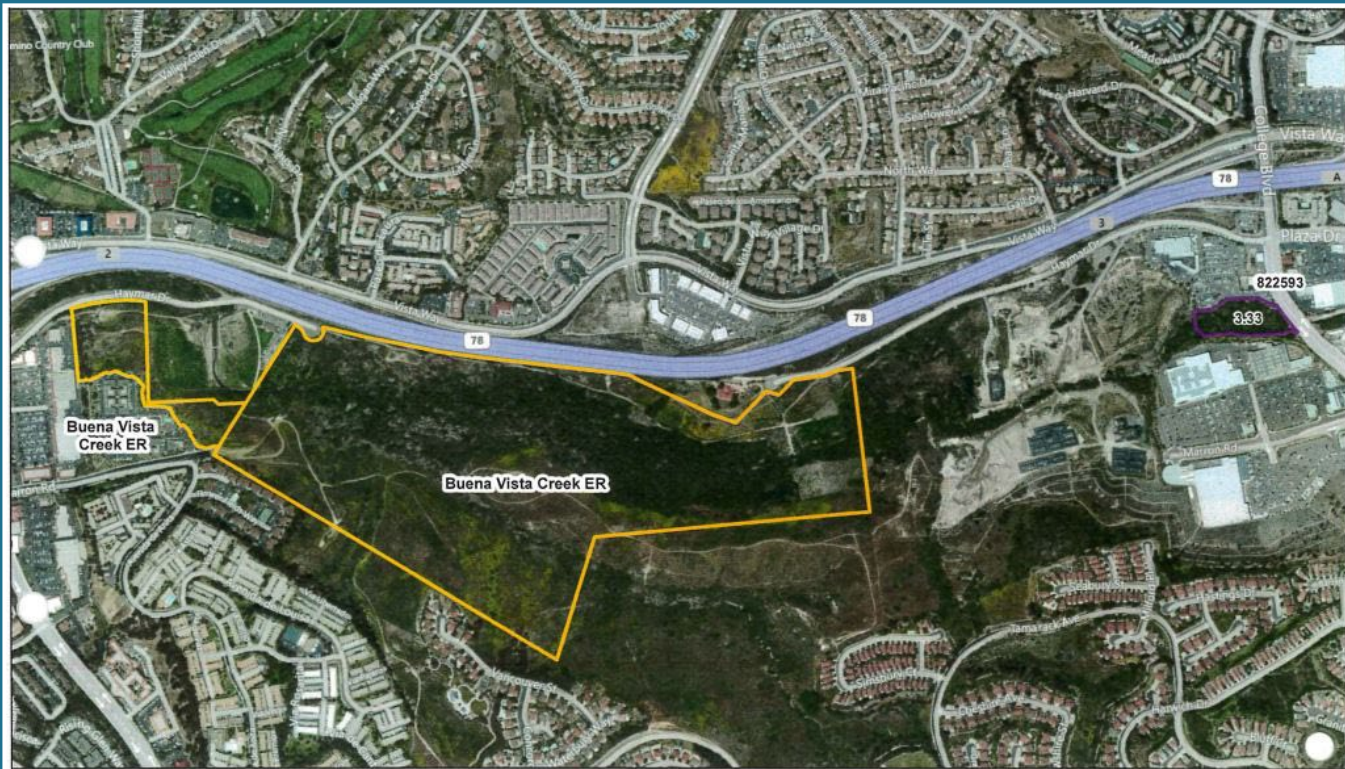
Thread-leaved Brodiaea (*Brodiaea filifolia*) site





State Endangered
Federally Threatened
Narrow Endemic



Buena Vista Creek Ecological Reserve



DATA SOURCE
Assessor Parcel - Land Vision
DFG Lands, September 2011
Image courtesy of NASA, (c)Harris Corp. Earthstar Geographics
LLC, Image courtesy of USGS, (c)EarthData, (c)Getmapping plc,
(c)2008 GeoEye, (c)2005 Pasco, (c)GeoContent / (p) Intergraph,
(c)2007 Terraltaly, (c)2007 Intermap, Image courtesy of the
IndianaMap, Image courtesy of the Nevada State Mapping
Advisory Committee, (c)2007 InterAtlas, (c)2008 Eurosense,
(c)2008 IGP, (c)2008 IGN

 New Boundary Using Assessor Parcel Boundary
 DFG Lands 0.00 Calculated GIS Acres

Wildlife Branch, Lands Program
Lisa Ohara
9/21/2011



Brodiaea filifolia plot

Carlsbad Highlands Ecological Reserve

Staff surveying for *Brodiaea filifolia*



Monarch butterfly (*Danaus plexippus*)
foraging on narrowleafed milkweed
(*Asclepias fascicularis*)

Contacts

HMP Implementation:

Alison Kalinowski, Environmental Scientist, CDFW

Alison.Kalinowski@wildlife.ca.gov

CLTE BIOS Help:

Kyle Rice, Environmental Scientist, CDFW

Kyle.Rice@wildlife.ca.gov

CDFW Reserve Manager:

Gabriel Penaflor, Environmental Scientist, CDFW

Gabriel.Penaflor@wildlife.ca.gov