

Welcome!

Habitat Management Plan
(HMP)
Annual Meeting



March 3, 2020

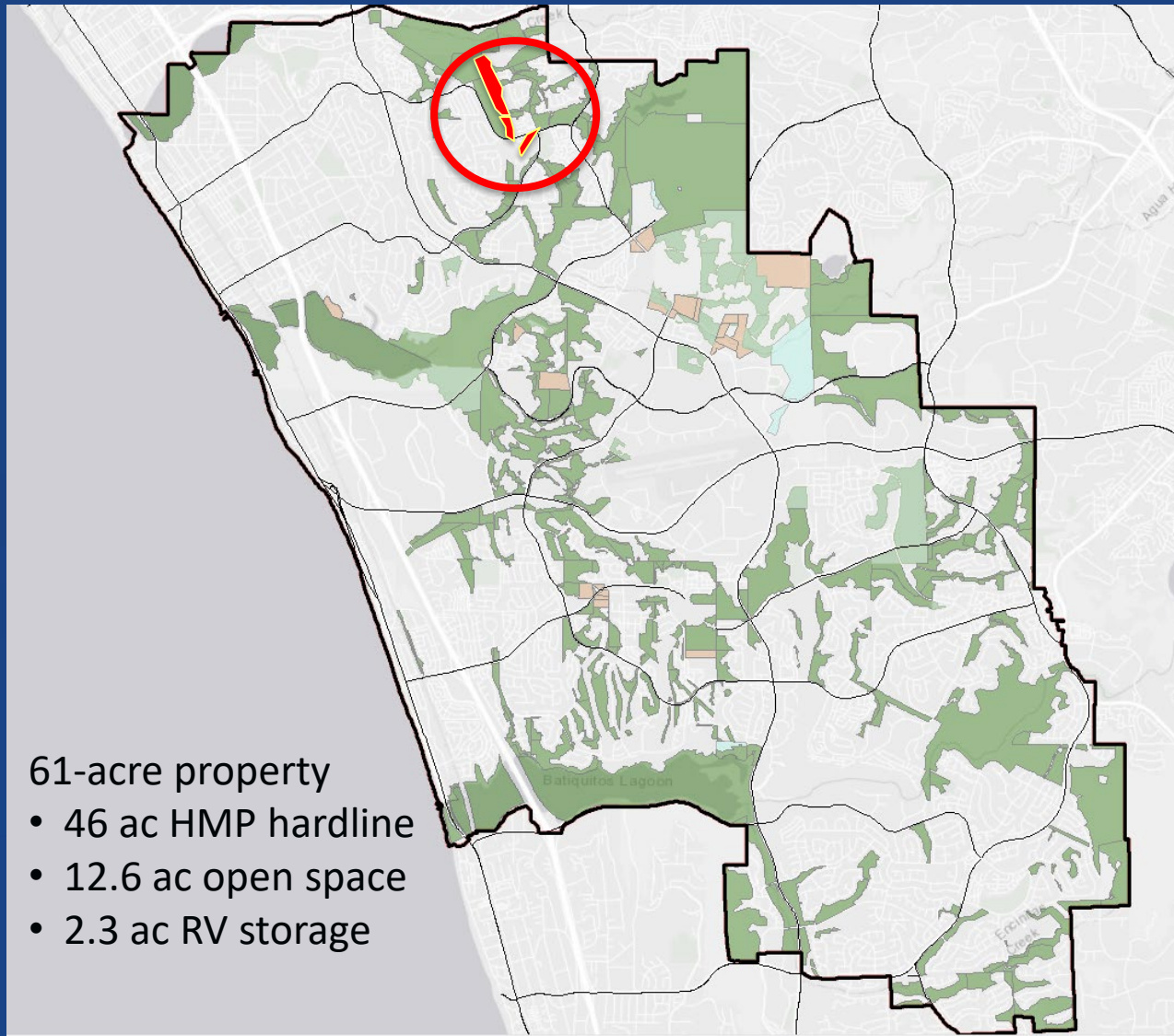
Agenda



- Welcome and introductions
- 2019 preserve management presentations
- Q&A at the very end
- No scheduled break so feel free to get up any time.

Rosanne.Humphrey@carlsbadca.gov

Village H wildlife studies



Village H South wildlife studies



- City recently acquired property
- Important for wildlife movement
- Historic trail used for off-leash dogs; city trail is now leash only
- Village H south is being considered for dog park
- Wildlife movement studies
 - Wildlife cameras ●
 - Dog waste
 - Roadkill _____
- Wildlife movement = healthy preserve system



Village H South

Participants

Hannah Swarthout, City HMP Staff, Project Lead

CSU San Marcos

- Brandon Huezo
- Emily Swarthout
- Jenni Franano
- Jose Flores

Palomar College

- Allison Menelli

Other Volunteers

- Sue Irey

Preserve Calavera

- Diane Nygaard
- Karen Merrill
- Paige DeCino

Environmental Science Assoc.

- Adrienne Lee
- Alanna Sullivan

Other City Staff

- Megan Powers
- Rosanne Humphrey



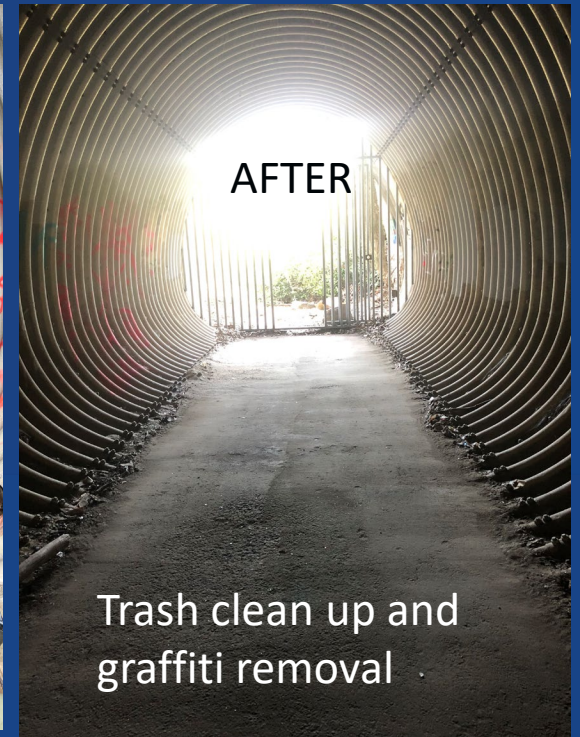
Wildlife cameras



Dog waste study





Wildlife cameras



Trash clean up and graffiti removal

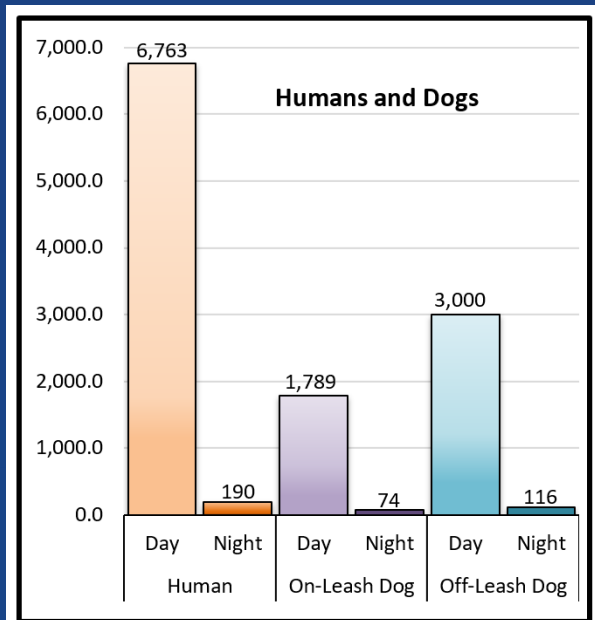
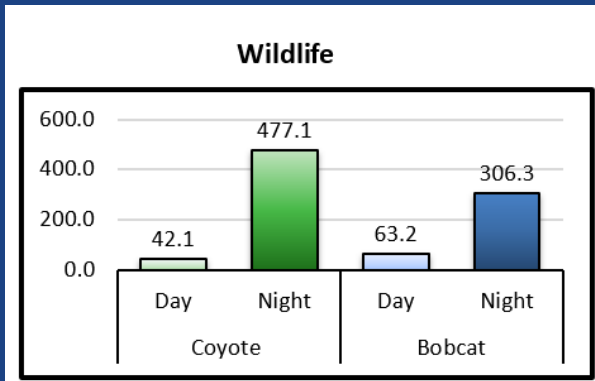
Village H wildlife cameras



-  HMP hardline preserve
-  Camera locations

- Presence/absence of wildlife
- Relative levels of activity
- Day vs. night
- Wildlife vs. people/dogs
- 21 camera locations
- On trail and off trail
- Undercrossings and other entry/exit points
- Different number of days for each camera

Wildlife Camera Results



- Targets: bobcats and coyote
- Temporal displacement
 - People/dogs active during day
 - Wildlife active at night
- Spatial displacement: wildlife use trails, but not frequently
- Overall use by people/dogs has declined steadily since July

Wildlife Camera Results

- Dark purple= most common movement path
- Light purple = occasional movement



Dog Waste Study



- Historic trail alignment was retained
- City cleaned area up (tree trimming, chipping, mulching)
- Trail brought to city standards (fencing, signage, dog waste stations)
- Opened to public as leash-only trail August 1, 2019

 HMP preserve

 Historic trail

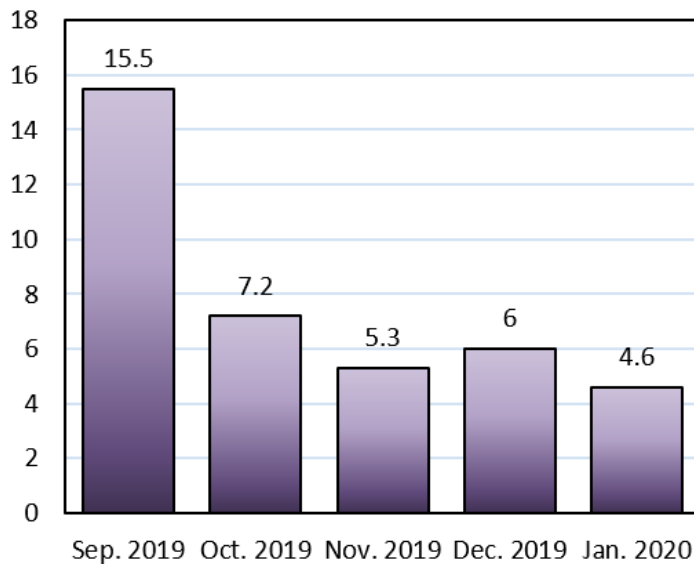
Dog Waste Study Results



- Pre-study:
 - 250 waste piles
 - 16 pounds
- Post study, per month:
 - 49 to 225 piles
 - 5 to 16 pounds
 - 2 to 56 tennis balls (toys)
- Even with waste stations, lots of waste not being picked up.
- 10% is bagged, left on ground
- Mostly on but also off trail

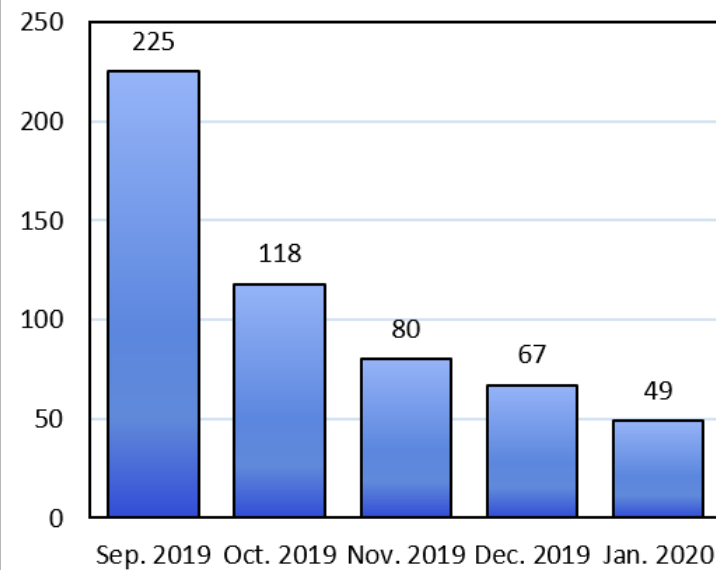
Dog Waste Study Results

Figure 7. Pounds of Dog Waste



- 5 to 16 pounds collected per month

Figure 6. Number of Waste Piles



- 49 to 225 waste piles collected per month

Wildlife Videos!

VH9.7coyotes
VH9.owl
VH9. bobcat

VH9.4raccoons
VH9.skunk

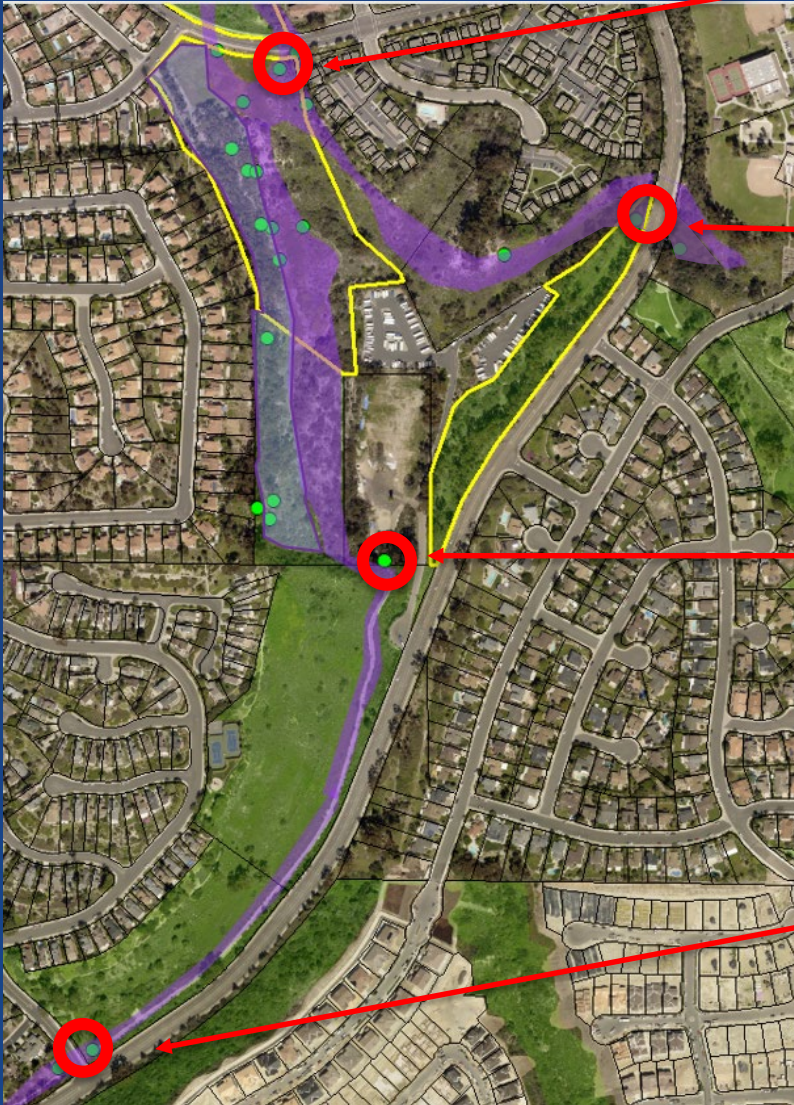
VH6.bobcat-before

VH6.bobcat-after

VH17.skunk
VH17.bobcat
VH17.coyote
VH17.oppossum

VH17.raccoon
VH17. coyote
VH17.raccoon

VH8.hummer
VH8.bobcat
VH8.coyote
VH8.4raccoons



Thank you!



Please save all questions for the end
Email questions or comments to
Rosanne.Humphrey@carlsbadca.gov