

# RESIDENTIAL GUIDE FOR RECYCLING AND TRASH SERVICES

A Reduce, Reuse, Recycling Resource





# Residential How-To Guide

The City's Sustainable Materials Management Division and Waste Management want to make it easy for residents to dispose of their waste in an environmentally friendly way. This guide is intended to provide residents with important information about Carlsbad's recycling and trash services, and other waste reduction and diversion programs available in the city.

## CART SERVICE



Standard Weekly Service



Monthly rates for weekly collection is based on the number and size of your trash cart. Additional trash carts over the one standard, and any extra recycle and green waste carts over the 3 allowed, can be provided at an additional monthly charge. If you have questions about trash/recycling rates, please visit [www.carlsbadca.gov/recycling](http://www.carlsbadca.gov/recycling).

## BILLING

Residents who reside within the Carlsbad Water District are invoiced every other month for both water and waste services by the City of Carlsbad. Residents who reside in the Vallecitos Water District or the Leucadia Wastewater District are invoiced by the appropriate district for water and sewer, and Waste Management for waste services.

### NEED A DIFFERENT SIZED CART?

Your first cart exchange is free. Any additional exchanges are charged a delivery fee.

RECYCLE, TRASH and GREEN WASTE carts are available in 3 sizes; 96 gallon, 64 gallon and 35 gallon.



## SERVICE BASICS

### Collection

Waste Management provided trash, recycling and green waste carts are collected weekly, serviced by a different truck on the same collection day. All materials must fit into the appropriate cart with the lid closed. You can find which day your area is serviced on page 14 of this guide.

### Set Carts Out by 6:00 AM

Roll carts out to the curb line by 6:00 AM on your collection day. Carts must be off city streets by midnight on the same day.

### Cart Placement

Place carts with handles facing away from the street, a minimum of 2' from cars, mailboxes and other objects, and 1' from other carts. Also make sure carts are out from under trees or other overhead obstructions.



### Exchanges

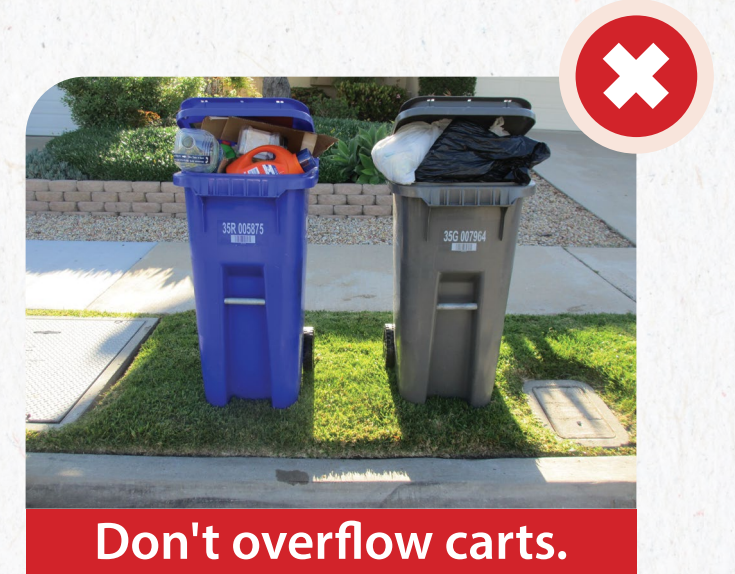
Carts damaged by normal wear and tear, or carts that become missing, can be replaced at no charge by calling Waste Management at 760-929-9400. If your cart size does not meet your household service needs and a change is necessary, you may call for a one-time exchange of any type or size of cart at not charge. Any additional exchanges are charged a delivery fee to exchange.

### Overloaded Carts

If one or more of your carts are identified as being overloaded, you will receive a notice of non-collection. If this occurs simply remove the excess material so that the cart lid can close tight and place the cart out the following week for collection.



Do close lids.



Don't overflow carts.

## Why?

Prevents litter going into storm drains and deters pests.



# What Goes in the Cart

## \* RECYCLE

When recycled, these items can be made into new products



Always recycle:



Paper



Plastic Bottle & Containers



Food & Beverage Cartons



Food & Beverage Cans

Breakdown Boxes



Flattened Cardboard & Paperboard



Glass Bottles & Containers

## Residential Battery Recycling Program



1 Collect your used household batteries. (Residents ONLY)



2 Place in clear zipper bag, 1 quart or smaller



3 Place on top of blue recycling cart lid. Do NOT place inside of cart!



## Recycling FAQ

Have recycling rules changed?

Most recycling rules haven't changed. You can still recycle common household items like bottles, cans, paper and cardboard. However, it has become increasingly important that you ONLY place approved recyclables into your recycling cart. If recycling loads contain trash or non-recyclables, the entire load might not be recycled. Avoid contaminating your recyclables by placing only the allowable items in the recycling cart.

1



Recycle all empty plastic bottles, cans, paper and cardboard.

2



Keep food and liquids out of the recycling.

3



Empty recyclables directly into your cart - NO bagged recyclables.



## Most Common Contaminants



**NO Recyclables in Plastic Bags**

Empty loose recyclables in bin but leave the plastic bag out.



**NO Food & Liquids**

Compost instead! Otherwise, it belongs in the trash.



**NO Hoses, Holiday Lights, Hangers & Extension Cords**

They wrap around equipment and can shut down an entire facility! They all go in the trash.



**NO Paper Napkins, Plates, Cups & Tissues**

Compost if possible, and remember to recycle the cardboard tube.



**NO Plastic Bags, Film/Sheeting & Flexible Film Packaging**

Take plastic bags back to a local grocer to keep bags clean and dry, and prevent them from shutting down recycling facilities. Visit [plasticfilmrecycling.org](http://plasticfilmrecycling.org) to find a drop-off location near you.



**NO Polystyrene Foam**

Foam and plastic to-go containers are not recyclable curbside. Find drop off programs for items like foam packing peanuts at [earth911.com](http://earth911.com)

**Keep these common contaminants OUT of your recycling container.**



## What Goes in the Cart

### \* GREEN WASTE

Recycle yard waste into mulch and compost



Please keep rock, sod and dirt free from the green cart. Also not acceptable is palm fronds and succulents, which belong in the landfill cart.

## What Goes in the Cart

### \* LANDFILL

Trash is not sorted and goes directly into the landfill



Chip Bags & Candy Wrappers

Flexible Packaging & Foil Containers

Foam Products  
(Check Earth911.org for options)

Plastic Knives & Forks,  
Paper Towels/Paper Plates

Food Waste

Plastic Bags  
(Recycle plastic bags by taking them to your local grocer)



### Recycling FAQ

#### Can I recycle shredded paper?

Shredded paper is not acceptable in your curbside cart, whether bagged or loose. Tiny pieces of shredded paper can easily cross-contaminate and devalue other recyclables during the sorting process. Luckily shredded paper is a great addition to your compost pile as long as it does not contain cellulose material (like windowed envelopes).



### READY TO TRY COMPOSTING?

Composting, nature's way of recycling, turns "organic waste," including food waste, leaves, and grass trimmings, into a valuable organic fertilizer. The City's Sustainable Materials Management Division offers free composting workshops and subsidized compost bins. **Give it a try!**

#### Free Composting Workshops

Please check the City of Carlsbad's website for schedule and registration information at [www.Carlsbadca.gov/recycling](http://www.Carlsbadca.gov/recycling)



#### Subsidized Compost Bins

The City of Carlsbad offers low cost compost bins to Carlsbad residents. For more information, please send a request to [recycle.trash@carlsbadca.gov](mailto:recycle.trash@carlsbadca.gov) or call 760-602-4646.



## DO NOT put these in your gray cart!



Batteries

Chemicals

CFL Light  
Bulbs/Tubes

Used Oil Filters

Electronics

Sharp Objects

Paint

Dispose of these items in an environmentally friendly way, as these DO NOT belong in the landfill.

### PALOMAR TRANSFER STATION

For excess trash generated by Do It Yourself Projects or cleanups, residents can dispose of it at **Palomar Transfer Station**, located at 5960 El Camino Real, Carlsbad. Hours of operation are 7:30 AM - 4:00 PM Sunday - Saturday. A fee is charged at the time of disposal. For more information call 760-603-0153.



# Household Hazardous Waste

It is illegal to dispose of household hazardous waste (HHW) and universal waste (u-waste) in your recycling, trash or green waste containers; down the drain; or by abandonment. These products can pose a threat to human health and the environment if they are incorrectly handled or disposed of.



Automotive Fluids and Batteries



Paints, Stains and Solvents



Household Cleaners, Aerosols and Sprays



Pesticides, Garden Chemicals and Pool Chemicals



Fluorescent Bulbs and Tubes



Household Batteries



Pharmaceuticals  
(NO controlled substances)



Fats, Oils and Grease  
(from food products, not hazardous waste)

## WHAT IS HOUSEHOLD HAZARDOUS WASTE

Any home products labeled toxic, flammable, corrosive or reactive are a health threat to people, animals and the environment. Examples of these products are pesticides, paints, fluorescent/CFL bulbs, cleaners, used motor oil, e-waste, and pharmaceuticals. These items **do not** belong in trash or recycling containers. Properly dispose of household hazardous waste through one of these convenient options:



- **One Day Event** – Once a year, the City's Sustainable Materials Management Division holds a special household hazardous waste drop-off event. Residents need to schedule an appointment to participate. Please check the city's website for dates and sign up information.
- **Drop Off Location** – This drop-off service is free with proof of residency. *(No appointment necessary)*  
**Stericycle Collection Facility**  
 1145 E. Taylor St., Vista CA 92084  
 800-714-1195  
 Saturdays 9am – 3pm
- **Door-to-Door** – The City of Carlsbad provides service through Stericycle to collect household hazardous waste material from the front door of residents' homes for a \$10 fee. Contact Stericycle at 800-714-1195 to schedule a collection.

## ELECTRONIC WASTE/UNIVERSAL WASTE

Many electronic products can be reused, refurbished or recycled. Help reduce waste by discarding electronic waste (e-waste) through one of these convenient options:

- **Free curbside collection** of up to five items, three times annually. To schedule an e-waste collection, contact Waste Management at 760-929-9400 at least 24 hours in advance of your regular collection day.
- **Drop off e-waste** for free at Waste Management's buyback center, located at 5960 El Camino Real, Carlsbad during the hours of 8am – 4pm, Tuesday – Saturday (closed for lunch between 12pm – 12:40pm).

### Some common electronic products are:

- Computers
- Printers
- Fax Machines
- Microwave Ovens
- TV's
- DVD/CD Players
- VCR's
- Stereos
- Cell Phones



**Do not place these items in your recycling, trash or green waste containers.**



## PHARMACEUTICALS

The current accepted practice for disposing of medications is through free drop-off programs. Pharmaceuticals or medications **do not** belong in trash or recycling containers.

### Drop Off Locations:

- **San Diego Sheriff's Encinitas Station** – 175 N. El Camino Real, Encinitas  
Monday – Friday from 8:00 AM – 5:00 PM - Residents can drop-off pharmaceuticals anonymously into the designated drop box available. For additional drop-box locations and more information, visit [www.sdsheeriff.net/prescription-drugs/dropbox.html](http://www.sdsheeriff.net/prescription-drugs/dropbox.html)
- **City of Carlsbad Safety Center** – 2560 Orion Way, Carlsbad  
Monday – Friday from 8:00 AM – 5:00 PM - Residents can drop-off pharmaceuticals anonymously into the designated drop box available.
- **CVS Store** – 2510 El Camino, Carlsbad  
24 hours/7 days a week. Does not accept sharps, aerosols, inhalers, illicit drugs or chemotherapy waste.

In addition to drop-off programs, residents can properly dispose of medications through one of these convenient options:

### • One Day Event

Once a year, the City's Sustainable Materials Management Division holds a special household hazardous waste drop-off event. Residents need to schedule an appointment to participate. Please check the city's website for dates and sign up information.

### • National Prescription Drug Take-Back

The DEA's Take Back Day events provide an opportunity for the public to safely dispose of prescription medications anonymously. This event is held twice annually at no charge. For information on dates and locations of this event, visit <https://takebackday.dea.gov/>



## SHARPS AND NEEDLES

Carlsbad residents may properly dispose of their sharps and needles through one of these convenient options:

### • Drop Off Location

Waste Management's buyback center located at 5960 El Camino Real, Carlsbad during the hours of 8am – 4pm, Tuesday – Saturday (closed for lunch between 12pm – 12:40pm).

### • One Day Event

Once a year, the City's Sustainable Materials Management Division holds a special household hazardous waste drop-off event. Residents need to schedule an appointment to participate. Please check the city's website for dates and sign up information.



### Free mail-back kit. Limit one per household, per year.

A limited number of free mail-back sharps kits are available at Waste Management's main office located at 5960 El Camino Real, Carlsbad. These kits include an approved sharps container and a postage prepaid mail-back box. Each household will be limited to one mail-back kit per year.



## Recycling FAQ

*Why can't I place bagged recyclables into my cart/ container?*

All your hard recycling work may be going to waste if you are putting recyclables in plastic bags. Because of health, safety and sheer volume issues, many of these plastic bags will not be opened, and the materials inside will be sent to the landfill.

## FREE YOUR RECYCLABLES.

No plastic bags.  
Put items directly into your recycling container.



For more information, visit:  
[RecycleOftenRecycleRight.com](http://RecycleOftenRecycleRight.com)

#Recycling101



Please **DO NOT** flush unwanted pharmaceuticals down the toilet or drain. These pharmaceuticals can pollute our water and unintentionally expose us to the chemicals in these medications. Instead of flushing unwanted medicines, you can throw them in the trash—but first, take steps to prevent children, animals, and others from coming into contact with them.



## Other Diversion Programs

The City of Carlsbad and Waste Management want to make it easy for residents to reduce, reuse or recycle their waste in a way that helps protect the environment. This section is intended to provide residents with important information on waste reduction, recycling services, and other diversion programs available in Carlsbad.

### BULK ITEM COLLECTION

Waste Management provides **FREE** collection of up to five large items such as furniture, including mattresses or appliances from your home three times annually. To schedule a bulky item collection, contact Waste Management at 760-929-9400 at least 24 hours in advance of your regular collection day.

*Please consider donating gently used items first before you dispose of them.*



### HOLIDAY TREE COLLECTION

Holiday trees are collected curbside for the first two weeks following Christmas on your regular collection day. Place trees next to your green waste cart. Remove all decoration including tinsel, lights, ornaments and tree stands. Drop-off locations are also provided around the city. Visit the city or Waste Management websites for the list of locations.



*Note: Flocked trees cannot be recycled and must be disposed of through regular trash service. Flocked trees must fit into the trash cart, with the lid closed to be collected.*



### SHREDDING

Waste Management sponsors a **FREE SHREDDING EVENT** to residents once annually on a Saturday in April. Residents need to schedule an appointment to participate. Scheduling appointments online start in late March or early April on Waste Management's website. Each household is limited to three standard sized storage boxes of sensitive documents only.

*Note: Shredded paper is not acceptable in your curbside cart, whether it is loose or bagged. See page 6 for more information.*

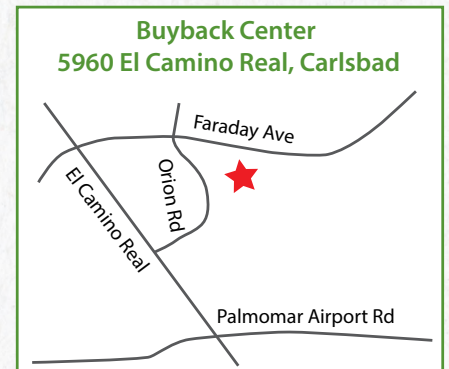


### BUYBACK CENTER

Waste Management's Buyback Center is located at 5960 El Camino Real, Carlsbad

Open Tuesday - Friday, between 8am & 4pm,  
closed daily 12:00pm-12:40pm

Residents can bring **California Redemption Value (CRV)\*\*** bottles and cans in for cash.



#### CRV Items

- Aluminum and Bi-Metal Beverage Cans
- Plastic Beverage Containers w/recycling symbols #1 - #7
- Glass Beverage Bottles (excluding wine and liquor)

*Residents may also drop off electronic waste, used household batteries and sharps.*



### Recycling FAQ

*Can I recycle bottle caps and other lids?*

**YES** - Please make sure your plastic bottles are clean and dry, and then put the cap back on and toss right in to the recycling. Caps on their own are too small to be recycled – they slip through the cracks of recycling equipment and jam up machinery.



### MISSED COLLECTIONS

Recycle, Trash and green waste carts are usually serviced around the same time of the day each week. However, due to unforeseen circumstances your collection time may vary from time-to-time. To ensure you are serviced weekly place your carts at the curb line by 6:00 AM on service day. If you are not serviced by the end of the day, please contact Waste Management at 760-929-9400 and collection will be completed by the next day.

### REPORT SCAVENGING

It is unlawful for any persons other than Waste Management to collect, remove, or dispose of solid waste (including recyclable materials) once the material is placed out for collection (Ord. CS-359 § 2, 2019; Ord. CS-183 § 2, 2012). To report scavenging contact the City of Carlsbad at 760-931-2197.



### Recycling FAQ

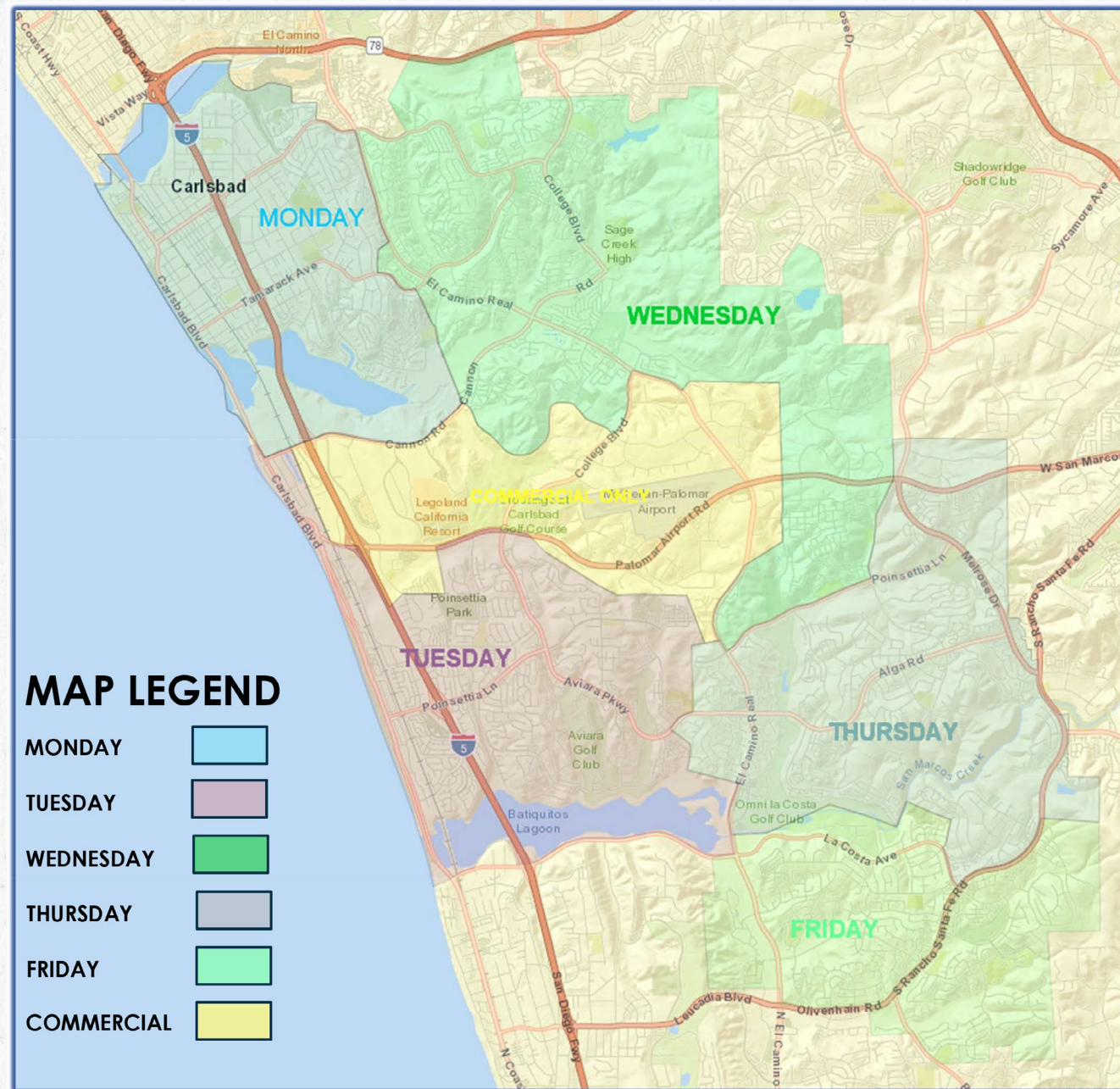
*Do bottles and cans need to be clean before putting in the recycle cart?*



While all bottles, cans and containers should be clean, dry and free of most food waste before you place them in your recycling cart, they don't have to be spotless. The goal is to make sure they are clean enough to avoid contaminating other material like paper. Try using a spatula to scrape cans and jars or using a small amount of water and shake to remove most residue.



## Carlsbad Days of Service



### Holiday Schedule

Residential waste collection does not occur on the following holidays:

- New Year's Day
- Memorial Day
- 4th of July
- Labor Day
- Thanksgiving Day
- Christmas Day

When the holiday falls on a weekday, collection will be delayed one day for the remainder of the week. If a holiday falls on a Saturday or Sunday, there will be no delays.

## Useful Contacts

### Waste Management Main Office

5960 El Camino Real  
 Carlsbad, CA 92008  
 760-929-9400  
<http://northcounty.wm.com>

### City of Carlsbad

1635 Faraday Ave.  
 Carlsbad, CA 92008

### Customer Service & Billing

760-602-2420  
 Includes new service, disconnections,  
 stop/start service, billing questions.

### City of Carlsbad

1635 Faraday Ave.  
 Carlsbad, CA 92008

### Sustainable Materials Management Division

#### Recycling and Trash Services

760-602-4646  
[recycle.trash@carlsbadca.gov](mailto:recycle.trash@carlsbadca.gov)  
 Promotes a variety of waste reduction,  
 composting and diversion programs.

### Waste Management

#### Buy Back Center

5960 El Camino Real  
 Carlsbad, CA 92008  
 760-929-9400  
 Hours: Tues-Sat 8 a.m.-4 p.m.  
 Closed daily 12:00 p.m.-12:40 p.m.

### Palomar Transfer Station

5960 El Camino Real  
 Carlsbad, CA 92008  
 760-603-0153  
 Hours: Mon-Fri 7 a.m.- 4 p.m.  
 Hours: Sat-Sun 7:30 a.m.- 4 p.m.

### Stericycle

#### Household Hazardous Waste

1145 East Taylor St.  
 Vista, CA 92084  
 800-714-1195  
 Hours: Sat 9 a.m.-3 p.m.  
 No appointment needed

Remember these three rules  
 each time you recycle:



1 Recycle all empty plastic bottles, cans, paper and cardboard.



2 Keep food and liquids out of the recycling.



3 Empty recyclables directly into your cart - NO bagged recyclables.





# REDUCE & REUSE for LESS WASTE

Making less waste doesn't just mean recycling. In fact, the best way to reduce waste is to not even create it in the first place. In some cases, this means reducing the amount of disposable items that you purchase and reusing and repairing products that you already have. Here are three tips to incorporate durable, reusable items into your daily routine and break away from wasteful habits.

---



## Reusable Shopping Bags

Both disposable paper and plastic bags have negative impacts on the environment and create waste. The best choice is to bring your own bag whenever possible. Most grocery stores will also give you a discount for each reusable bag you use.



## Reusable Water Bottles

It takes more than 17 million barrels of oil per year to produce the plastic for the bottles we use, yet only a fraction of plastic bottles in the U.S. get recycled. Avoid unnecessary waste by filling your own bottle with tap water.



## Reusable Travel Mug

Since paper cups are not accepted in Carlsbad's recycling program, skip the paper to-go cup and opt for using a reusable stainless steel or porcelain mug instead. And as a bonus, most coffee shops will give you a discount for using your own mug.



5960 El Camino Real  
Carlsbad, CA 92008

