

All Receive - Agenda Item # 3
For the Information of the:
CITY COUNCIL
Date 6/10/24 CA CC
CM ACM DCM (3)



Council Memorandum

June 10, 2024

To: Honorable Mayor Blackburn and Members of the City Council
From: Zach Korach, Finance Director
Via: Geoff Patnoe, Assistant City Manager *GP*
Re: **Additional Materials Related to Staff Report Item No. 3 – Initiating Proceedings for the Annual Levy of Assessments within Street Lighting and Landscaping District No. 1, a Special Assessment District (District - All)**

This memorandum provides additional materials to Consent Calendar item No.3: Initiating Proceedings for the Annual Levy of Assessments within Street Lighting and Landscaping District No. 1, a Special Assessment District.

The following Lighting and Landscaping District No. 1 maps were not included with the preliminary engineer's report:

- Street Lighting Improvement Zone Diagram Map.
- Street Tree Improvement Zone Diagram Map.
- Median Landscaping Improvement Zone Diagram Map.

Please see attached maps to be added to Attachment A, Preliminary Engineer's Report Fiscal Year 2024-25 Street Lighting and Landscaping District No. 1 of Exhibit 1.

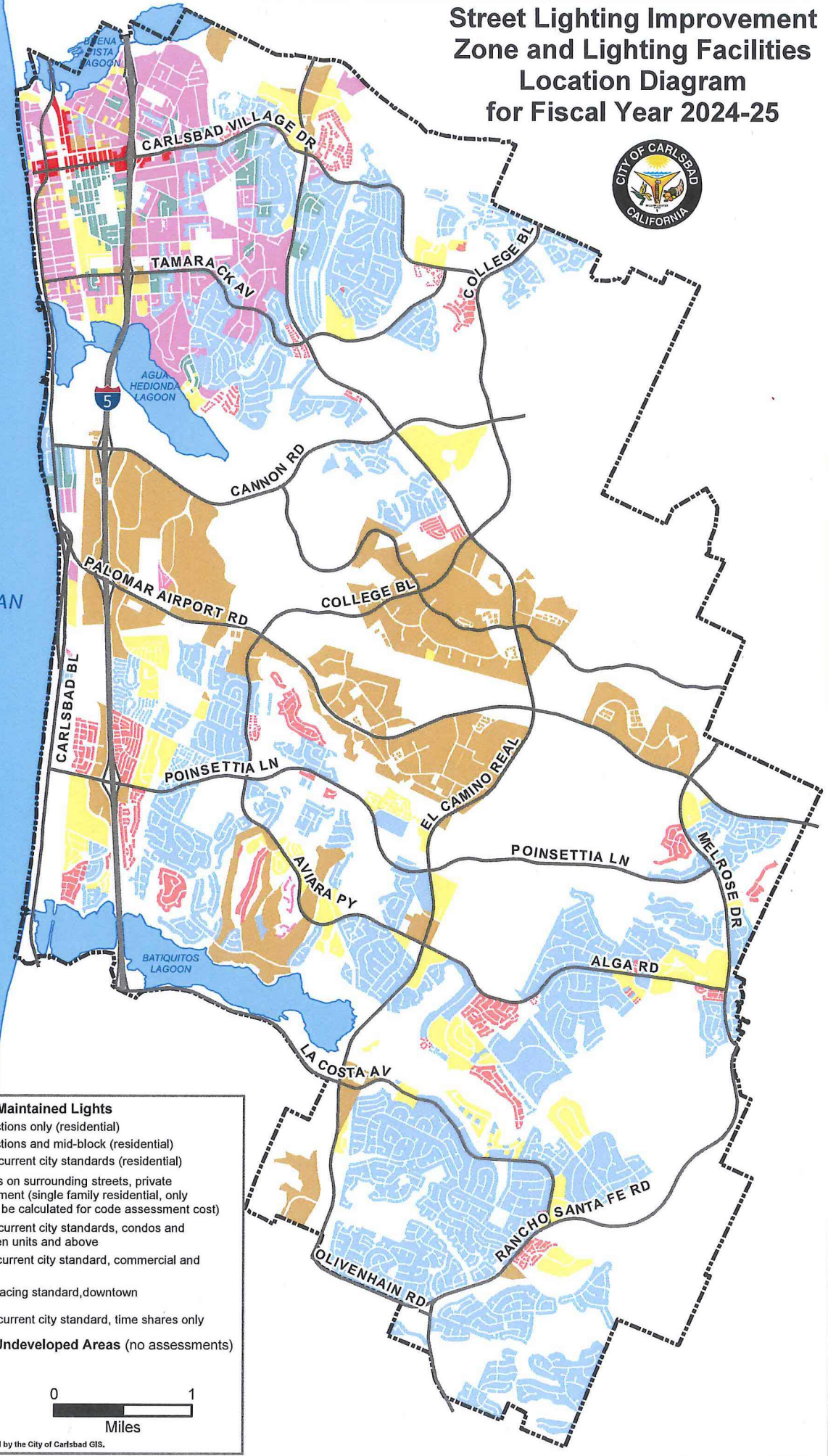
Attachment: A. Street Lighting Improvement Zone Diagram Map
A. Street Tree Improvement Zone Diagram Map
A. Median Landscaping Improvement Zone Diagram Map

cc: Scott Chadwick, City Manager
Cindie McMahon, City Attorney
Laura Rocha, Deputy City Manager, Administrative Services

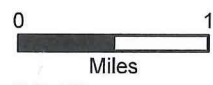
Street Lighting Improvement Zone and Lighting Facilities Location Diagram for Fiscal Year 2024-25



PACIFIC OCEAN



- Zone 1 - City Owned and Maintained Lights**
- A1 - Street lights at intersections only (residential)
 - B1 - Street lights at intersections and mid-block (residential)
 - C1 - Street light spacing at current city standards (residential)
 - D1 - City owned street lights on surrounding streets, private lighting within development (single family residential, only adjacent city lights will be calculated for code assessment cost)
 - E2 - Street light spacing at current city standards, condos and apartment buildings, ten units and above
 - F2 - Street light spacing at current city standard, commercial and industrial parcels
 - G2 - Special lighting and spacing standard, downtown redevelopment area
 - H1 - Street light spacing at current city standard, time shares only
- Zone 2 - Non-Benefiting, Undeveloped Areas (no assessments)**
-



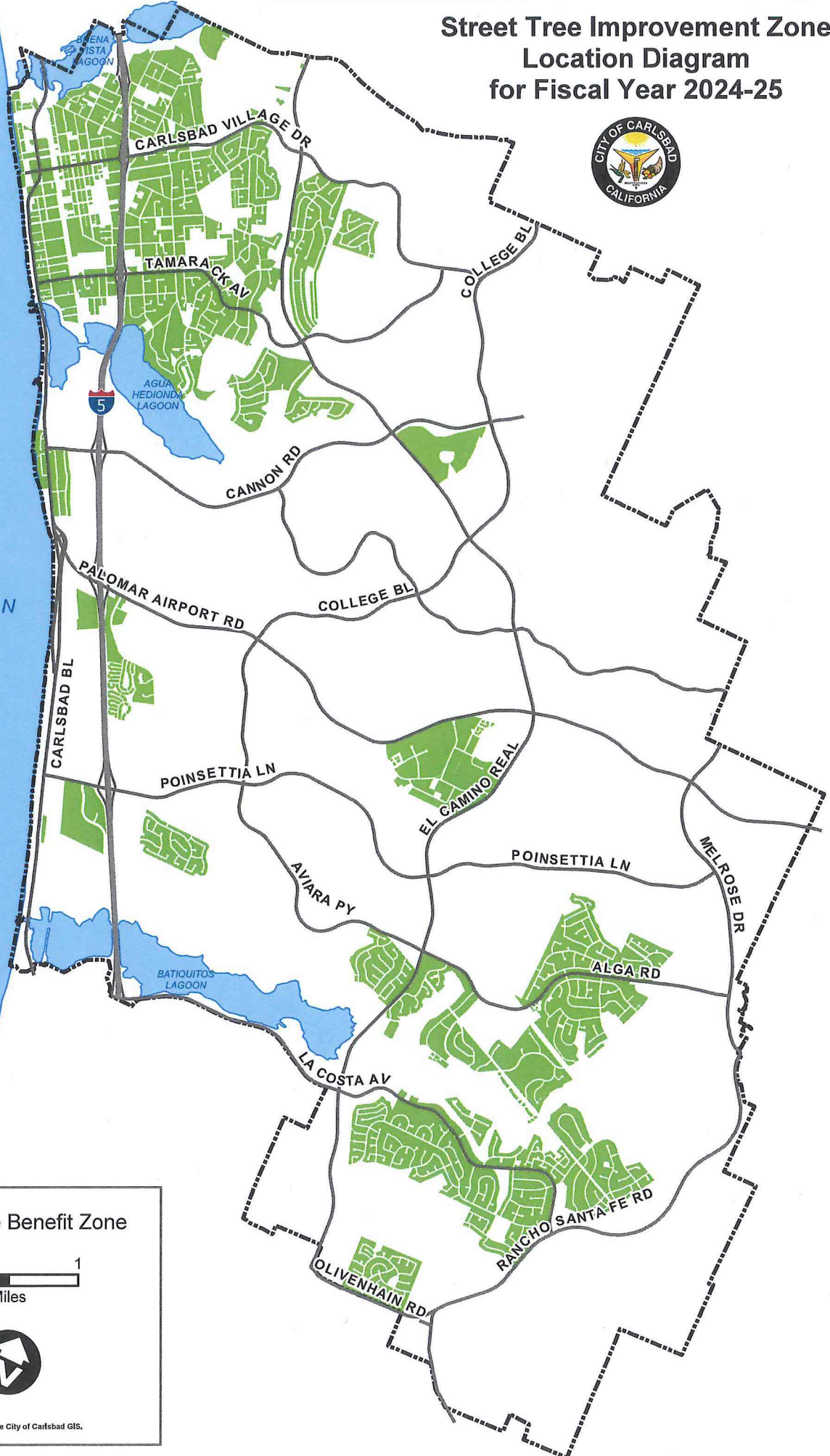
Map created by the City of Carlsbad GIS.

Document Path: \\shares\GIS_app\cbgis\products\Standard Maps\FINANCE\2024\StreetLightingZone_8x11.pdpx

Street Tree Improvement Zone Location Diagram for Fiscal Year 2024-25



PACIFIC OCEAN



 Tree Benefit Zone

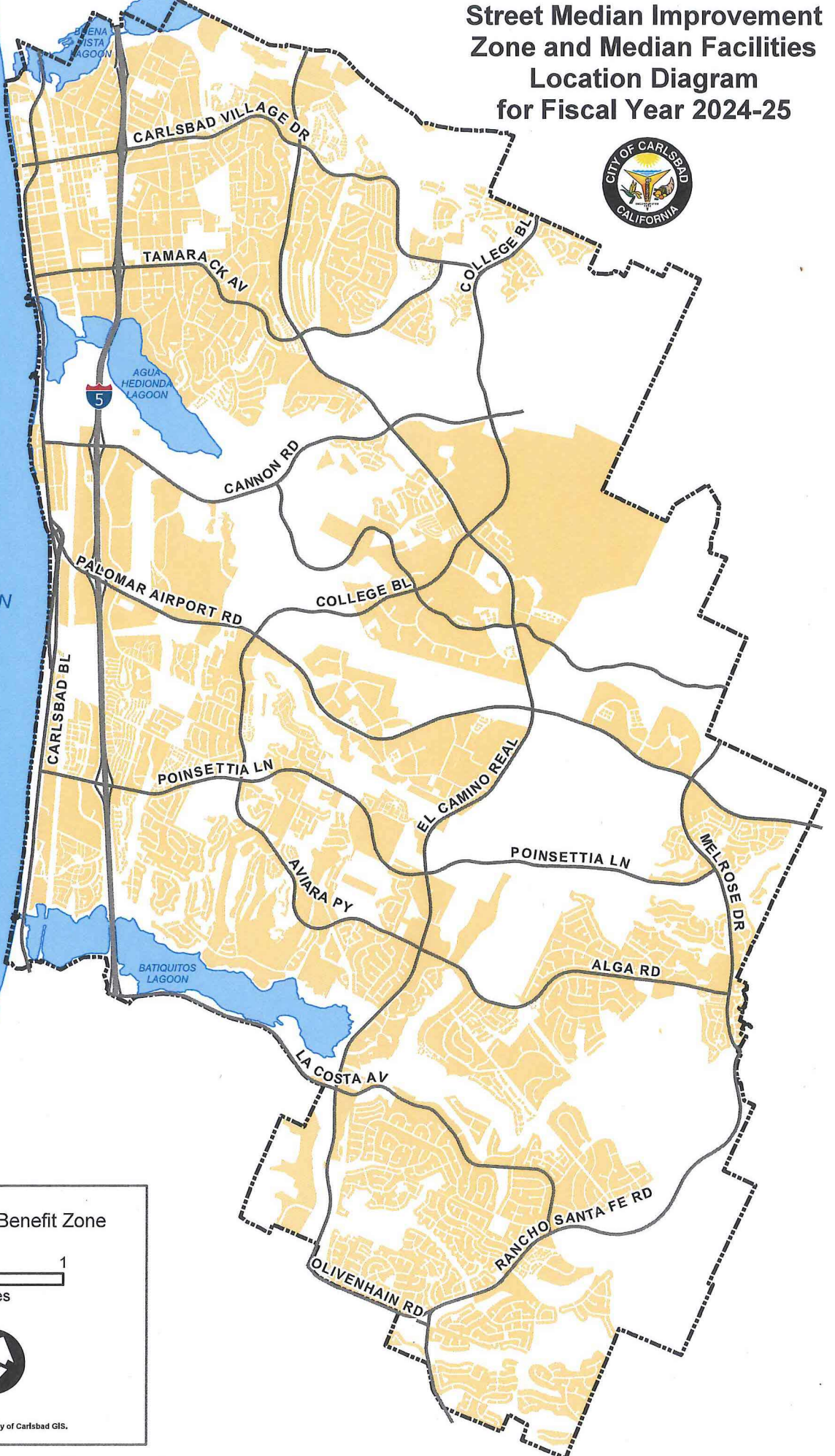


Map created by the City of Carlsbad GIS.

Street Median Improvement Zone and Median Facilities Location Diagram for Fiscal Year 2024-25



PACIFIC OCEAN



Median Benefit Zone



Map created by the City of Carlsbad GIS.