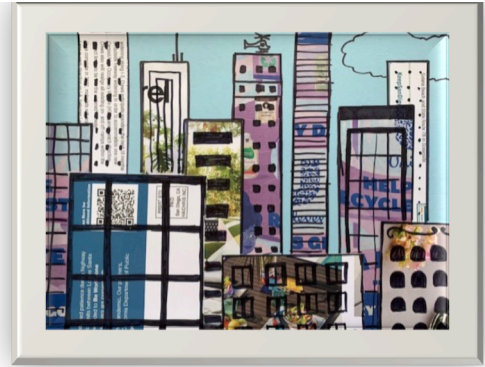


LESSON PLAN

AT-HOME ART PROJECT: Cityscape Collage **INSTRUCTIONS**



MATERIALS NEEDED FROM HOME:

- Colored Pen, Marker, or Sharpie (any color)
- Blank Piece of Paper (any size/any color)
- Papers like magazine pages or ads/coupons that come in the mail (2-3)
- Large scratch paper that can be put under the work area, like newspaper or grocery store fliers
- Scissors
- Ruler or straight edge (Like a cereal box or book)
- Glue Stick or Glue Bottle

ART PROJECT DESCRIPTION: Artists will use various recycled papers and pen to imagine and create their own cityscape.

PROMPT QUESTIONS:

- When you think of a big city with lots of buildings, imagine what it was like when the city was first being built. How do you think the city changed as each building was added?
- When looking at a cityscape, do you notice that buildings that are furthest away are smaller and thinner (they are in the background) while buildings that are closest are larger and wider (they are in the foreground)? What do you think the area of buildings in the middle is called? (the middle ground!)
- What feeling do you get when you see a cityscape? Do you feel excited to see towering buildings? Do you feel crowded in? Imagine what it would be like to live in a big city, how would that compare to where you live now?

ART MAKING PROCESS: (See photos below)

LESSON PLAN

Step 1:

- Lay down your large scratch paper to create a work area. Use your pen and ruler/straight edge to draw rectangles on the recycled papers you are using. *Remember to draw a variety of sizes- some thin and long, some wide and short, and some in between. You don't have to measure, just use your artist's eye. **(Fig.1)** Using your scissors, cut out the rectangle shapes. **(Fig.2)**

Step 2:

- Position your blank paper horizontally and start laying down your rectangle cutouts on the paper- these represent the city buildings in your artwork. Begin by putting down the furthest buildings (long and thin rectangles/the background) in a row with small gaps in between across your paper. **(Fig.3)** Each rectangle should touch the bottom of the paper but not the top. If there are pieces that are too long for your paper, just cut them to fit within the paper. Glue those pieces onto the paper.

Step 3:

- Next lay down a row of rectangles/buildings that would represent your middle ground. You should overlap some of your other rectangles. **(Fig.4)** Glue the middle ground rectangles down when you are satisfied with their positions. Finally you will add your front row of buildings (in the foreground) using your wider/shorter rectangles. Position those overlapping the buildings you have already glued down. **(Fig.5)** Once they are in position, glue them down as well. You might not use all the rectangles you cut, you can recycle those or use them in a different project.

Step 4:

- Now that your buildings are layered and glued down your city is starting to take shape! Use your pen to add details to your cityscape **(Fig.6)**; windows on some of the buildings, a moon or sun in the sky, clouds or an airplane flying over the city (remember everything closer to you looks bigger and everything gets smaller as it goes back in space). Outline your buildings so the shapes really stand out **(Fig.7)**. It's your city so use your imagination to make it the way you want to see it!

POST PROMPT QUESTIONS:

- Does your city look like a place you'd like to visit or live?
- Does it remind you of a city you have visited or lived in?
- When you look at other landscapes do you notice the foreground/middle ground/background? How would you create artworks with other landscapes using the same ideas you used in this art project?

EXTRA FUN:

What would a cityscape on Mars look like? Create it!

LESSON PLAN

EXAMPLES:

Fig.1



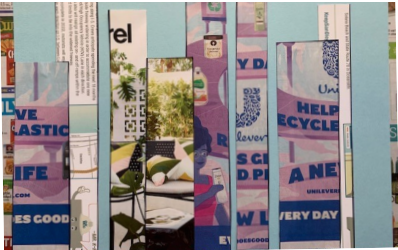
Fig.2



Fig.3



Fig.4



LESSON PLAN

Fig.5



Fig.6



Fig.7

