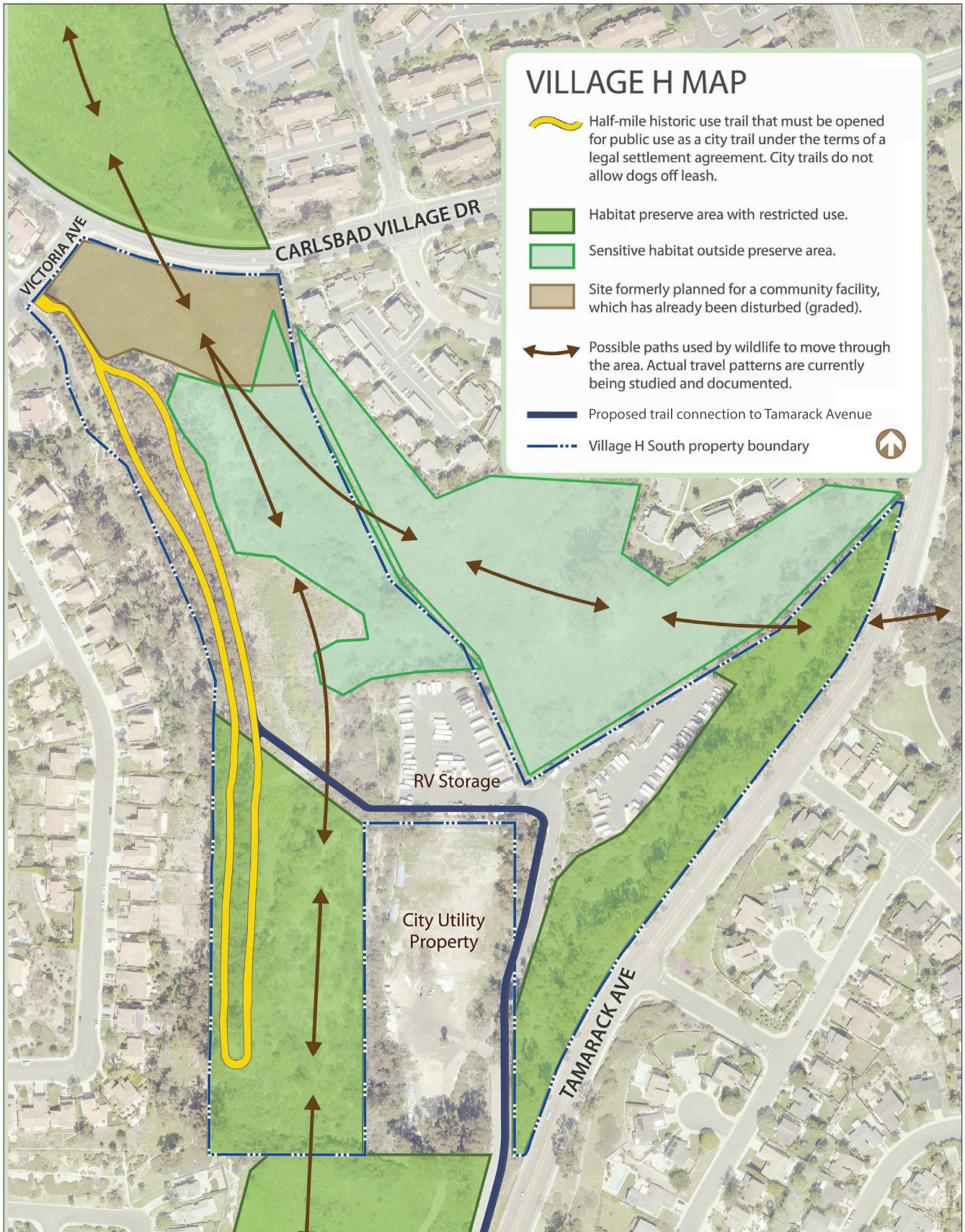
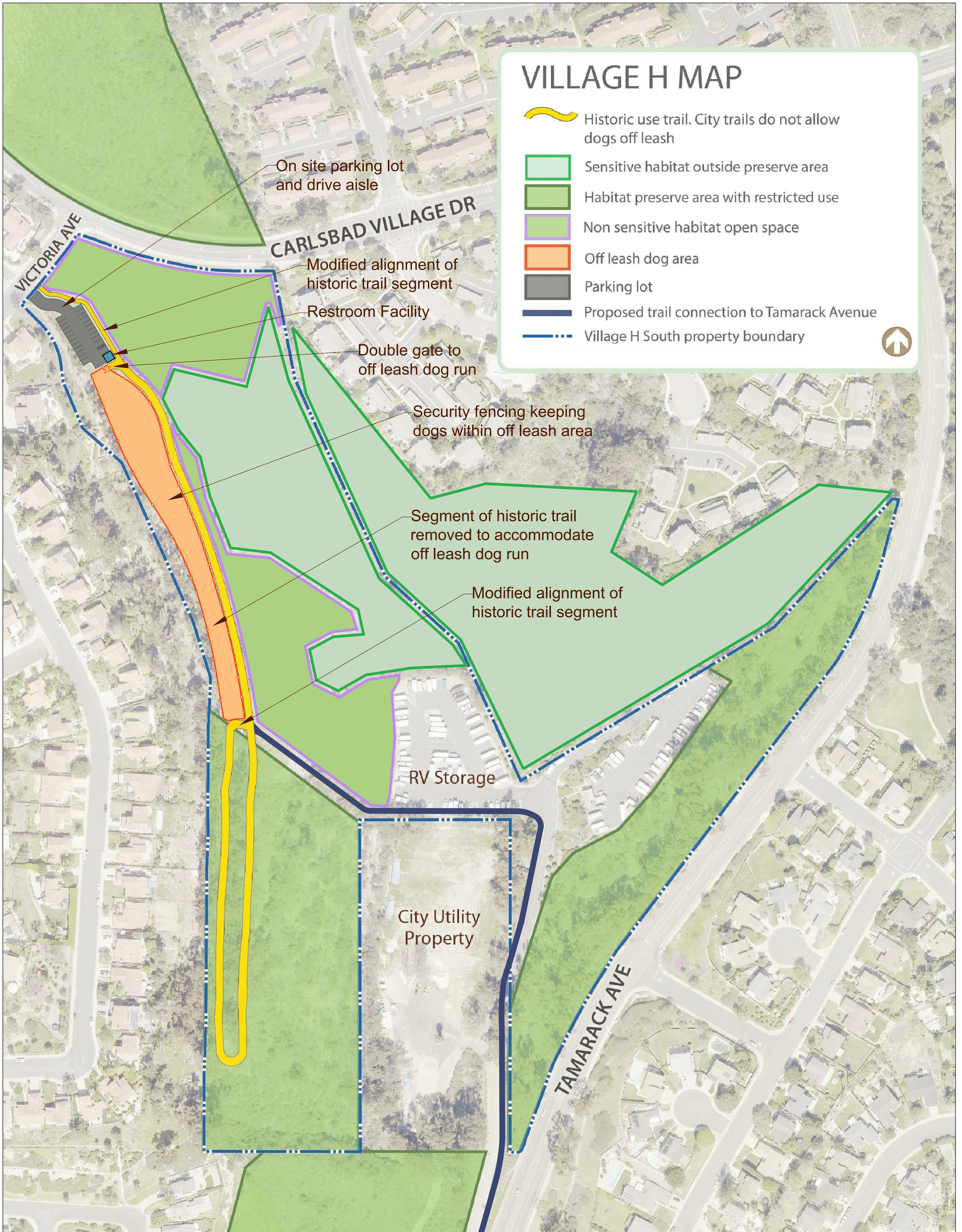


VILLAGE H SOUTH - EXISTING USE



VILLAGE H SOUTH - STAFF & PRESERVE CALAVERA OPTION



Staff & Preserve Calavera Option

Off leash dog area approximately 1.0 acre/ min width 35'/ length 750'

Opportunities:

1. Modifications of historic trail accepted by Preserve Calavera
2. Location of off leash dog run accepted by Preserve Calavera
3. Expanded opportunity for wildlife movement N-S
4. Preserves approximately 4.0 acres of non sensitive habitat
5. No direct impact to sensitive habitat to the east
6. Provides for on site parking
7. Off leash dog area is fenced in with single access gate
8. Daily maintenance of off leash dog area
9. Accommodates dogs on leashes and off
10. No conflicts with trail segment connecting to Tamarack Ave.

Constraints:

1. Impacts to water quality due to dog waste
2. Parking lot run off (oils, etc.)
3. City law requires an EV charging station
4. Greater stormwater runoff
5. Increased dog waste and noise due to designated off leash dog area
6. Increased disturbance of wildlife
7. Need for enforcement and maintenance
8. Smaller off leash dog area than prior options
9. Requires update to the Calavera Hills Master Plan