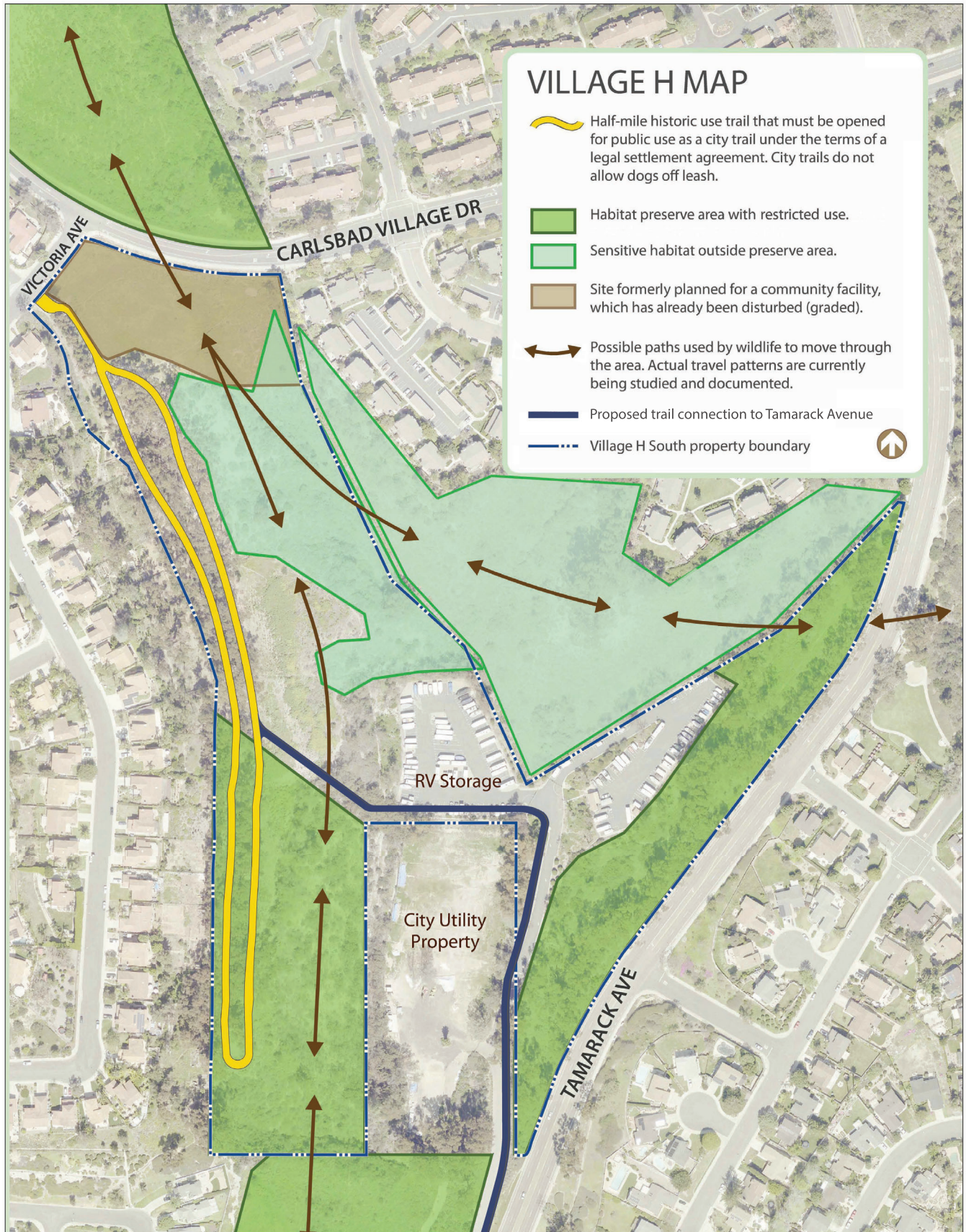
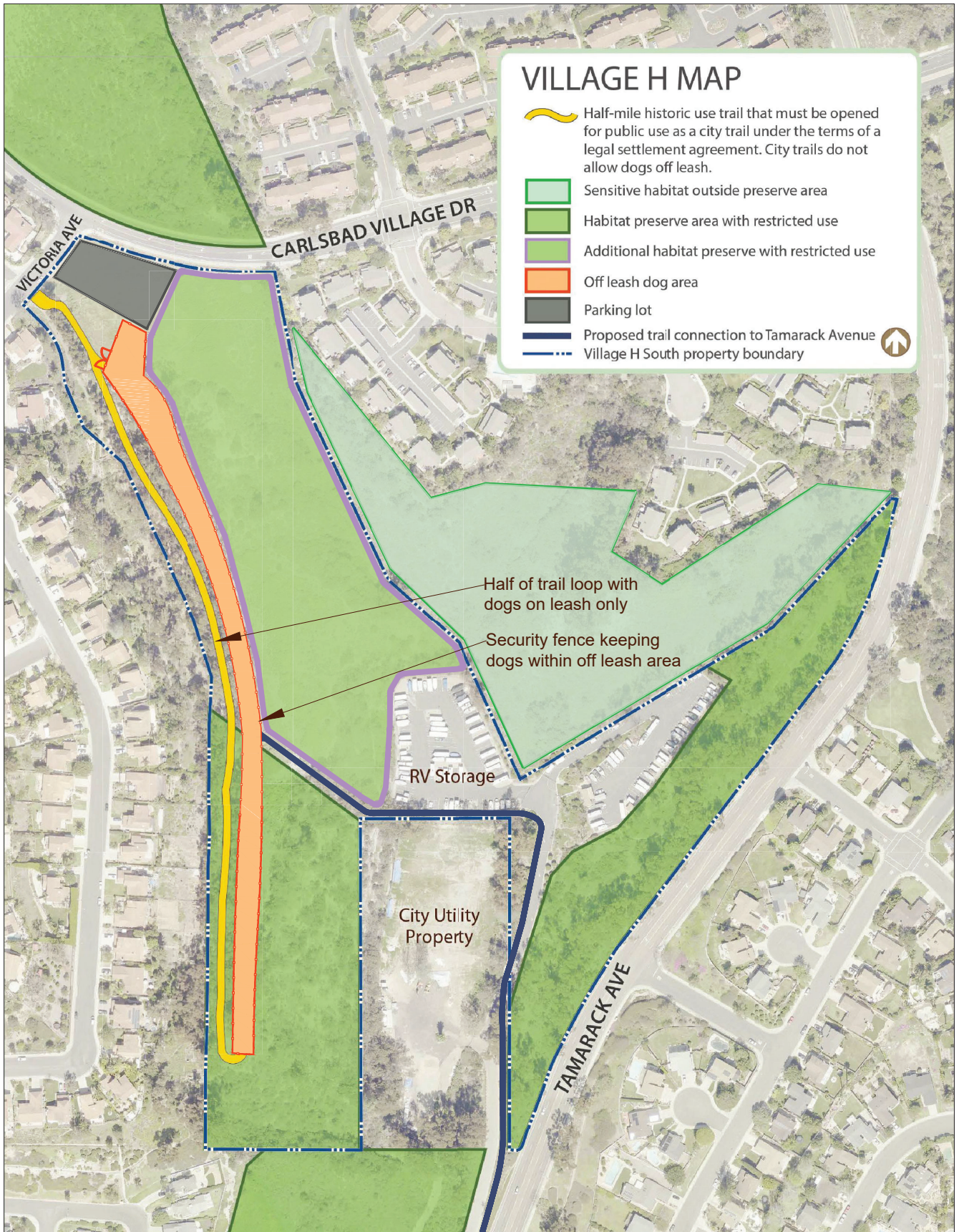


VILLAGE H SOUTH - EXISTING USE



Page intentionally left blank

VILLAGE H SOUTH - PUBLIC INPUT OPTION 1



Public Input Option 1

Off leash dog area approximately 1.6 acre/min width 35'

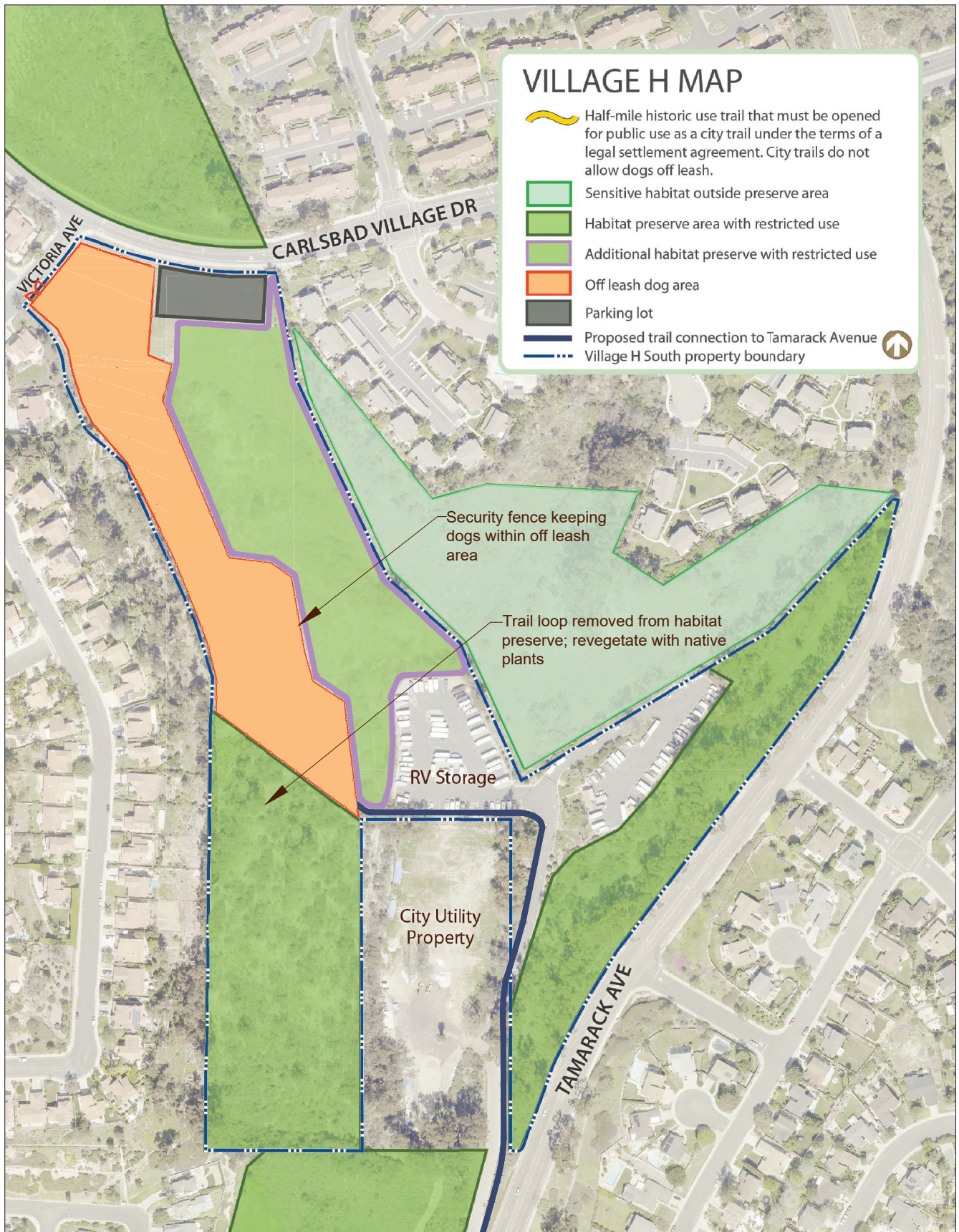
Opportunities:

1. Adds approximately 4.5 acres of habitat to the city's preserve system
2. Off street parking provided
3. Accommodates dogs on leashes and off
4. Area for dogs has already been used for that purpose
5. Daily maintenance of off leash dog area

Constraints:

1. Violates settlement agreement because portion of historic trail is removed
2. Holder of conservation easement is opposed to this option
3. Encroachments of dog park into habitat preserve
4. Security fence could interfere with wildlife movement
5. Prevents public trail segments from connecting Village H South Trail to Tamarack Ave.
6. Parking lot run off (oils, etc.)
7. City law requires an EV charging station
8. Greater stormwater runoff
9. Increased dog waste and noise due to designated off leash dog area
10. Increased disturbance of wildlife
11. Need for enforcement and maintenance greater than other options
12. Loop trails is eliminated
13. Requires update to the Calavera Hills Master Plan

VILLAGE H SOUTH - PUBLIC INPUT OPTION 2



Public Input Option 2

Off leash dog area approximately 4.4 acre/ min width 85'

Opportunities:

1. Adds approximately 5 acres of habitat to the city's preserve system
2. Improves protected habitat by removing trail and restoring native plants
3. Large off leash dog area
4. Off street parking provided
5. Area for dogs is fenced in
6. Daily maintenance of off leash dog area
7. Restored impacts to existing habitat preserve

Constraints:

1. Violates settlement agreement because entire historic trail is removed
2. Holder of conservation easement is opposed to this option
3. Security fence could interfere with wildlife movement
4. Parking lot run off (oils, etc.)
5. City law requires an EV charging station
6. Greater stormwater runoff
7. Increased dog waste and noise due to designated off leash dog area
8. Increased disturbance of wildlife
9. Possible noise/privacy impacts to neighbors
10. Need for enforcement and maintenance greater than other options
11. Entrance to parking lot from Carlsbad Village Drive is not safe
12. Eliminated trail connectivity as adopted in Trails Master Plan
13. Requires update to the Calavera Hills Master Plan

VILLAGE H SOUTH - PUBLIC INPUT OPTION 3



Public Input Option 3

Off leash dog area approximately 5 acres/min width 65'

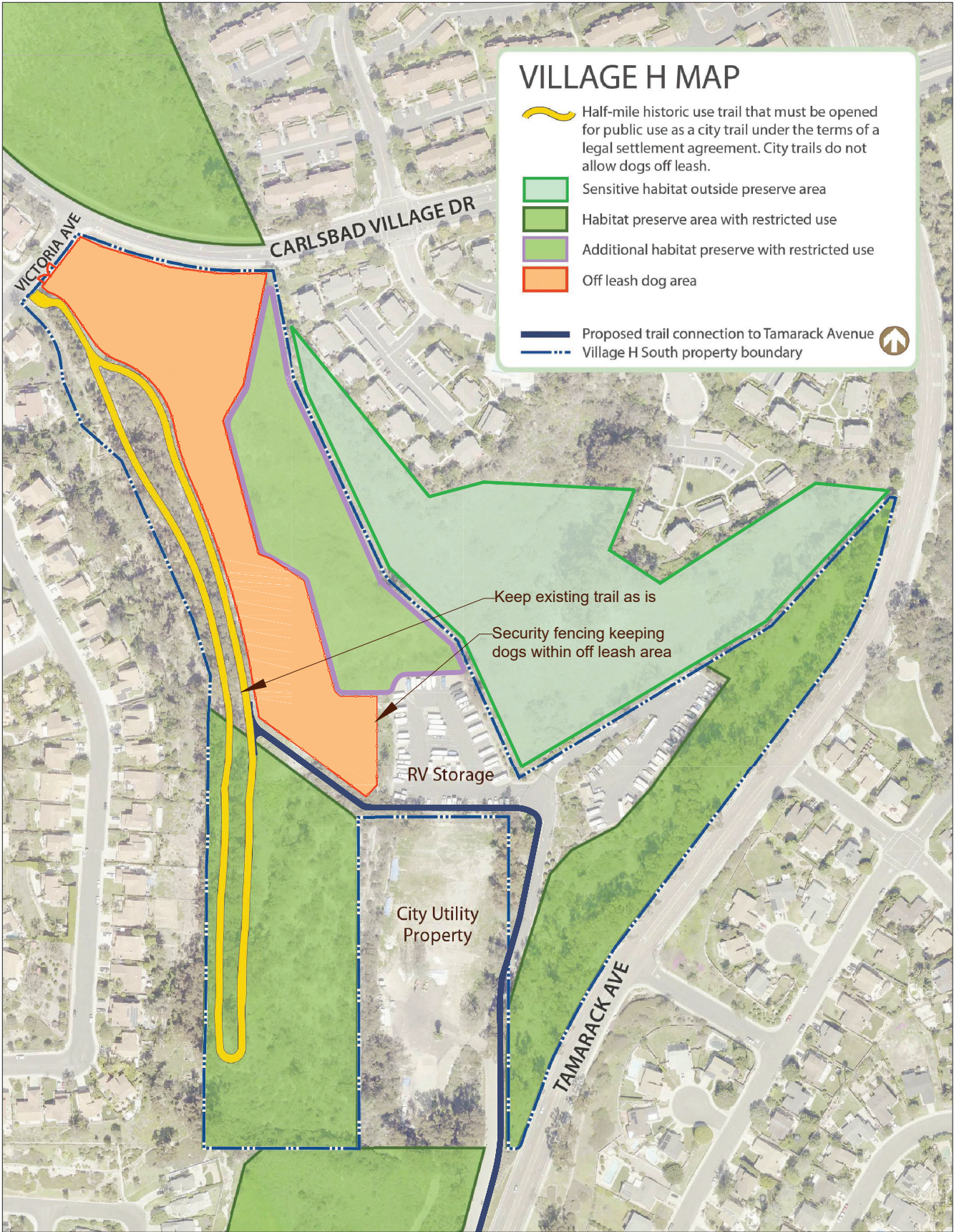
Opportunities:

1. Adds approximately 6 acres of habitat to the city's preserve system
2. Large off leash dog area
3. Area for dogs is fenced in
4. Daily maintenance of off leash dog area

Constraints:

1. Violates settlement agreement because entire historic trail is removed
2. Holder of conservation easement is opposed to this option
3. Security fence could interfere with wildlife movement
4. Impacts to water quality due to dog waste
5. Greater stormwater runoff
6. Encroachments of dog park into habitat preserve
7. No parking lot/suggested location was not part of project area
8. Increased dog waste and noise due to designated off leash dog area
9. Increased disturbance of wildlife
10. Possible noise/privacy impacts to neighbors
11. Need for enforcement and maintenance greater than other options
12. Eliminated trail connectivity as adopted in Trails Master Plan
13. Requires update to the Calavera Hills Master Plan

VILLAGE H SOUTH - PUBLIC INPUT OPTION 4



Public Input Option 4

Off leash dog area approximately 4.4 acre/ min width 70'

Opportunities:

1. Historic trail with dogs on leash per the Settlement Agreement
2. Adds approximately 3 acres of habitat to the city's preserve system
3. Large off leash dog area
4. Off leash dog area is fenced in
5. Daily maintenance of off leash dog area
6. Consistent with use regulations per Carlsbad Municipal Code

Constraints:

1. Wildlife movement blocked through the entire parcel
2. Holder of conservation easement is opposed to this option
3. Impacts to water quality due to dog waste
4. Decreased habitat area to the east
5. Greater stormwater runoff
6. No parking lot/suggested location was not part of project area
7. Increased dog waste and noise due to designated off leash dog area
8. Increased disturbance of wildlife
9. Need for enforcement and maintenance greater than other options
10. Requires update to the Calavera Hills Master Plan