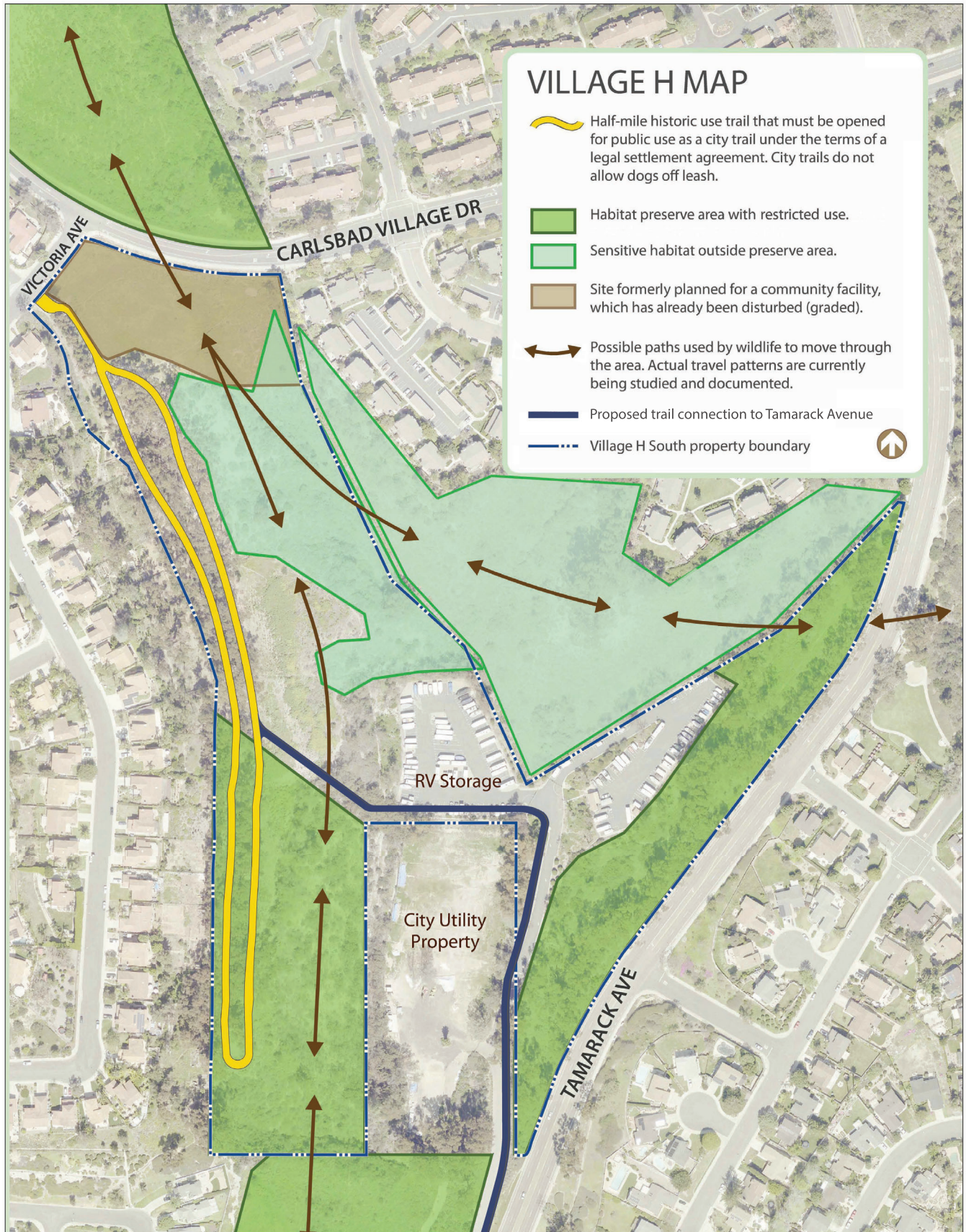
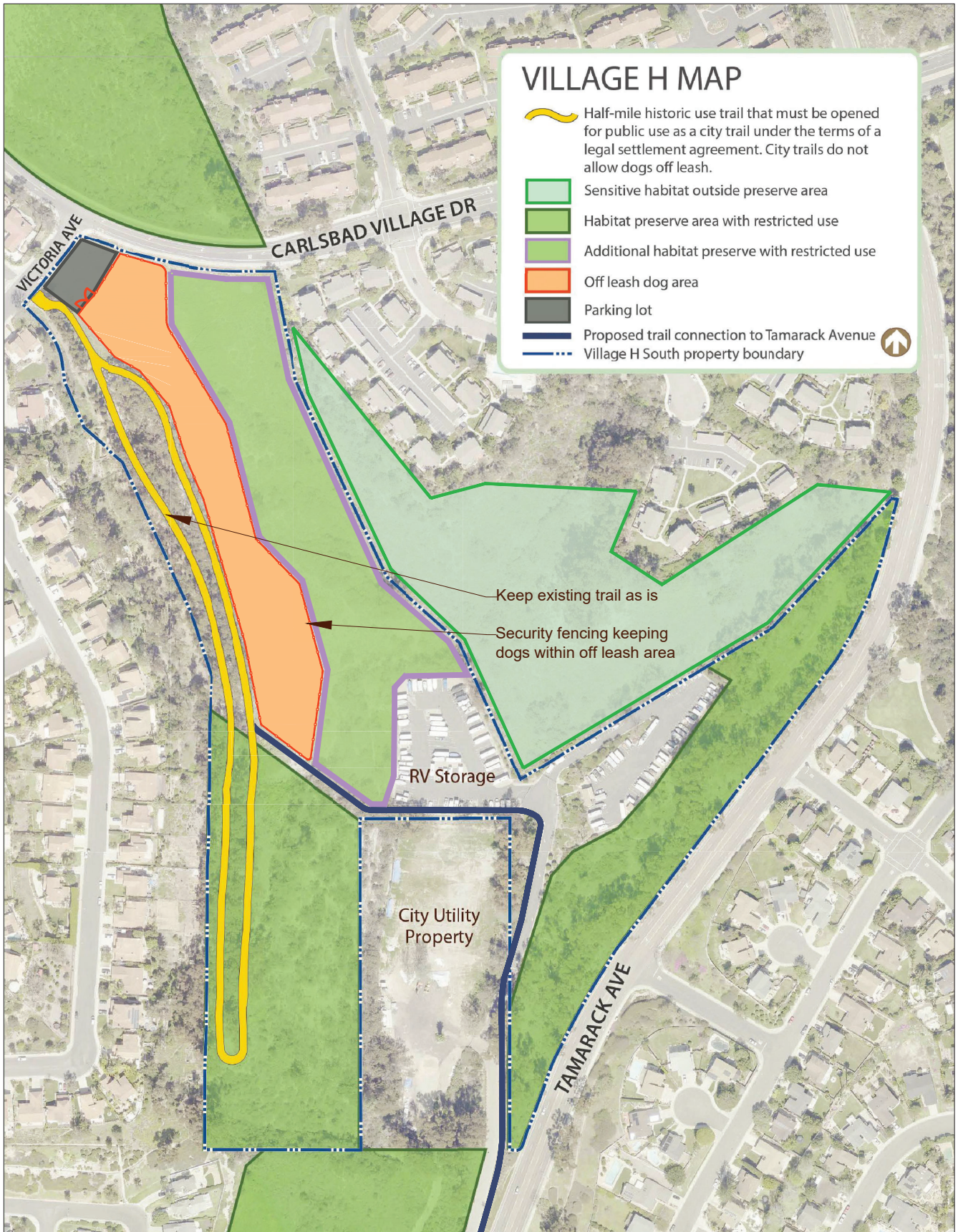


VILLAGE H SOUTH - EXISTING USE



Page intentionally left blank

VILLAGE H SOUTH - STAFF OPTION



Staff Option

Off leash dog area approximately 2.7 acre/ min width 75'

Opportunities:

1. Historic trail with dogs on leash per the Settlement Agreement
2. Adds approximately 4.5 acres of habitat to the city's preserve system
3. Opportunity for more wildlife movement
4. Preserve acreage of habitat to the east
5. Off street parking provided
6. Off leash dog area is fenced in
7. Daily maintenance of off leash dog area
8. Accommodates dogs on leashes and off
9. No conflicts with trail segment connecting to Tamarack Ave.

Constraints:

1. Impacts to water quality due to dog waste
2. Holder of conservation easement is opposed to this option
3. Parking lot run off (oils, etc.)
4. City law requires an EV charging station
5. Greater stormwater runoff
6. Increased dog waste and noise due to designated off leash dog area
7. Need for enforcement and maintenance greater than other options
8. Smaller off leash dog area
9. Requires update to the Calavera Hills Master Plan