

Sustainable Mobility Plan

Stakeholder Working Group Meeting #2

Agenda

- SWG Summary and Technical Developments
- Evaluation Criteria and Prioritization Ranking
- Presentation Scheduling
- Tour of make Campus (optional)

Planning Process and Schedule

- Summer '18:
 - Existing Conditions Assessment
 - Stakeholder Engagement Planning
- **Fall '18:**
 - Design Guidelines Development
 - Stakeholder Engagement Efforts
 - Project Criteria and Identification
- **Winter '18:**
 - Project Prioritization
 - Plan Development and Adoption

Planning Process and Schedule

- Summer '18:
 - Existing Conditions Assessment
 - Stakeholder Engagement Planning
- **Fall '18:**
 - Design Guidelines Development
 - Stakeholder Engagement Efforts
 - Project Criteria and Identification
- Winter '18:
 - Project Prioritization
 - Plan Development and Adoption

SWG#1 - Desired Outcomes

CITY OF CARLSBAD
STAKEHOLDER WORKING
GROUP MEETING #1

AUGUST 23, 2018

QUESTIONS

- 1. NOT DUPLICATING TDH EFFORTS? IMPLEMENTATION?
 - ↳ WILL BRING ALL PLANS TOGETHER. IN PROCESS OF PLANNING FOR IMPLEMENTATION
- 2. COMMUNICATING WITH EACH OTHER?
 - ↳ OPEN MEETING STRUCTURE, ENCOURAGE COMMUNICATION, I.E. EMAIL LISTS
- 3. MEASURE OF SUCCESS? DELIVERABLE?
 - ↳ PLAN TO CITY COUNCIL; STAKEHOLDER INPUT IS DELIVERABLE
- 4. IS PLAN CODE & POLICY?
 - ↳ MOBILITY ELEMENT, COMPLYING WITH CLIMATE ACTION PLAN; ADDITIONAL *WELCOME STAKEHOLDER FEEDBACK
- 5. WOULD TYPOGRAPHY SHIFT CHANGE PLAN? (I.E. USERS)
 - ↳ FLEXIBILITY FOR ADJUSTMENT BASED ON TYPOGRAPHY
- 6. ANALYSIS OF ORIGIN + DESTINATION?
 - ↳ MANY ANALYSES UNDER WHY; IMPROVED DATA
- 7. HOW DO WE TREAT POSSIBLE OLYMPIC IMPACT?
 - ↳ SOMETHING TO CONSIDER

OUTCOMES



SWG#1 - Desired Outcomes

TRANSIT/JOB/SCHOOL ACCESS

- Improve the “first-mile/last-mile” connectivity
- Safer and more comfortable transit access
- Request and use mobility data from major employers and destinations
- Improve congestion and safety conditions at school sites

SWG#1 - Desired Outcomes

ACTIVE MOBILITY

- Expand and improve east-to-west connections across the City
- Target high-congestion locations for safety improvements and alternative mobility options
- Educate and encourage the community on using alternative modes and changing behaviors
- Provide amenities at City facilities that will encourage employees to bicycle and walk to work

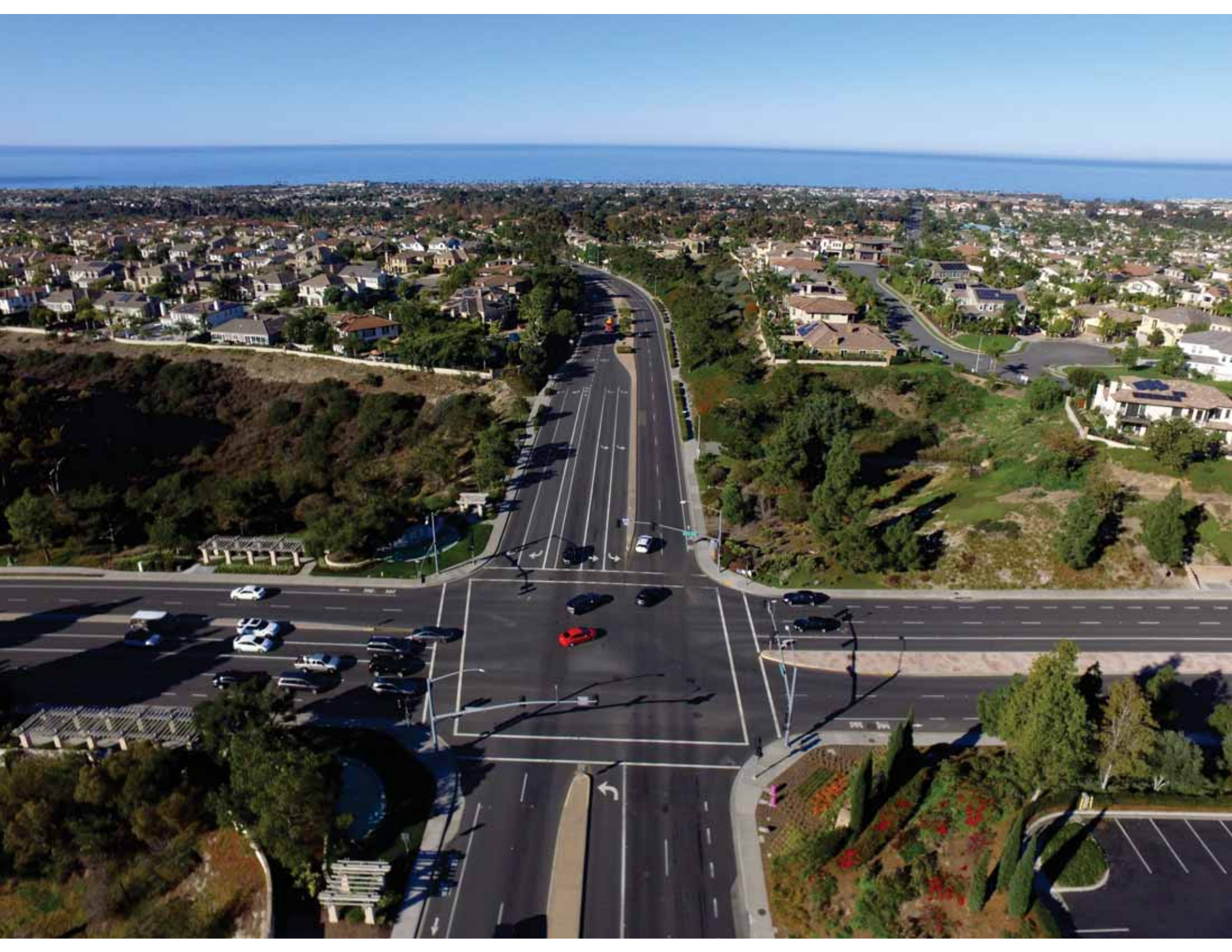
SWG#1 - Desired Outcomes

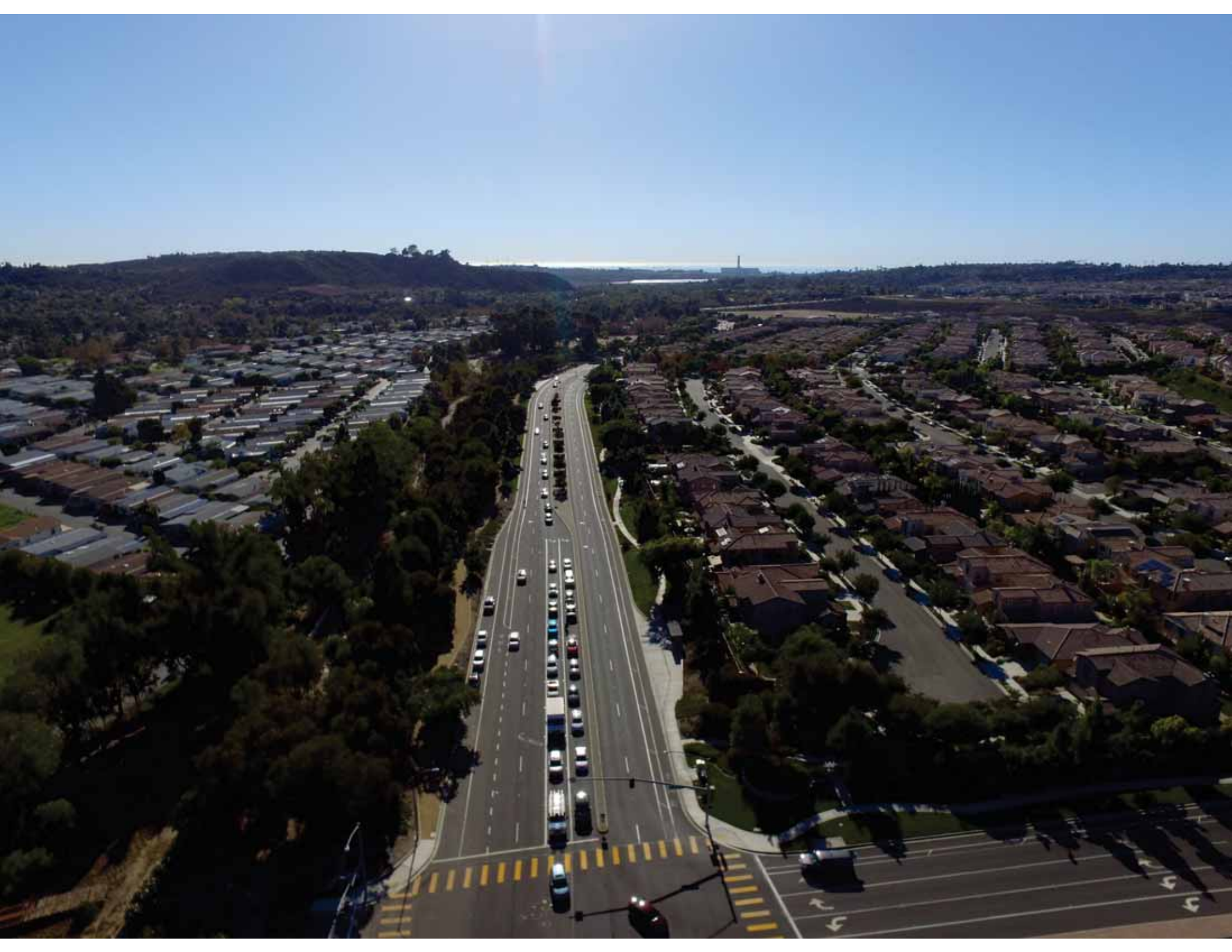
POLICIES

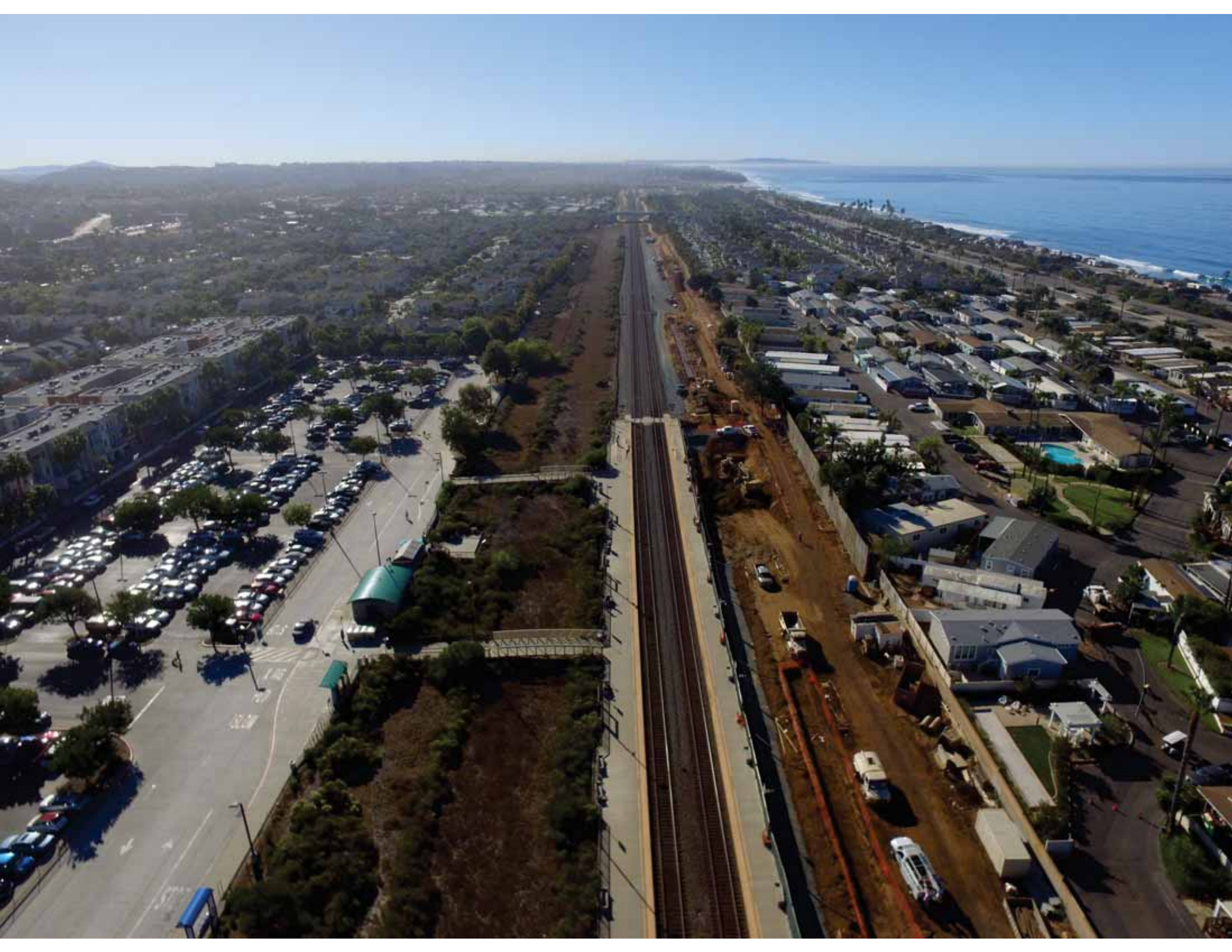
- Pursue “Vision Zero” policies that address the root causes of collisions
- Address improved safety, accessibility and connectivity to major destinations and within neighborhoods

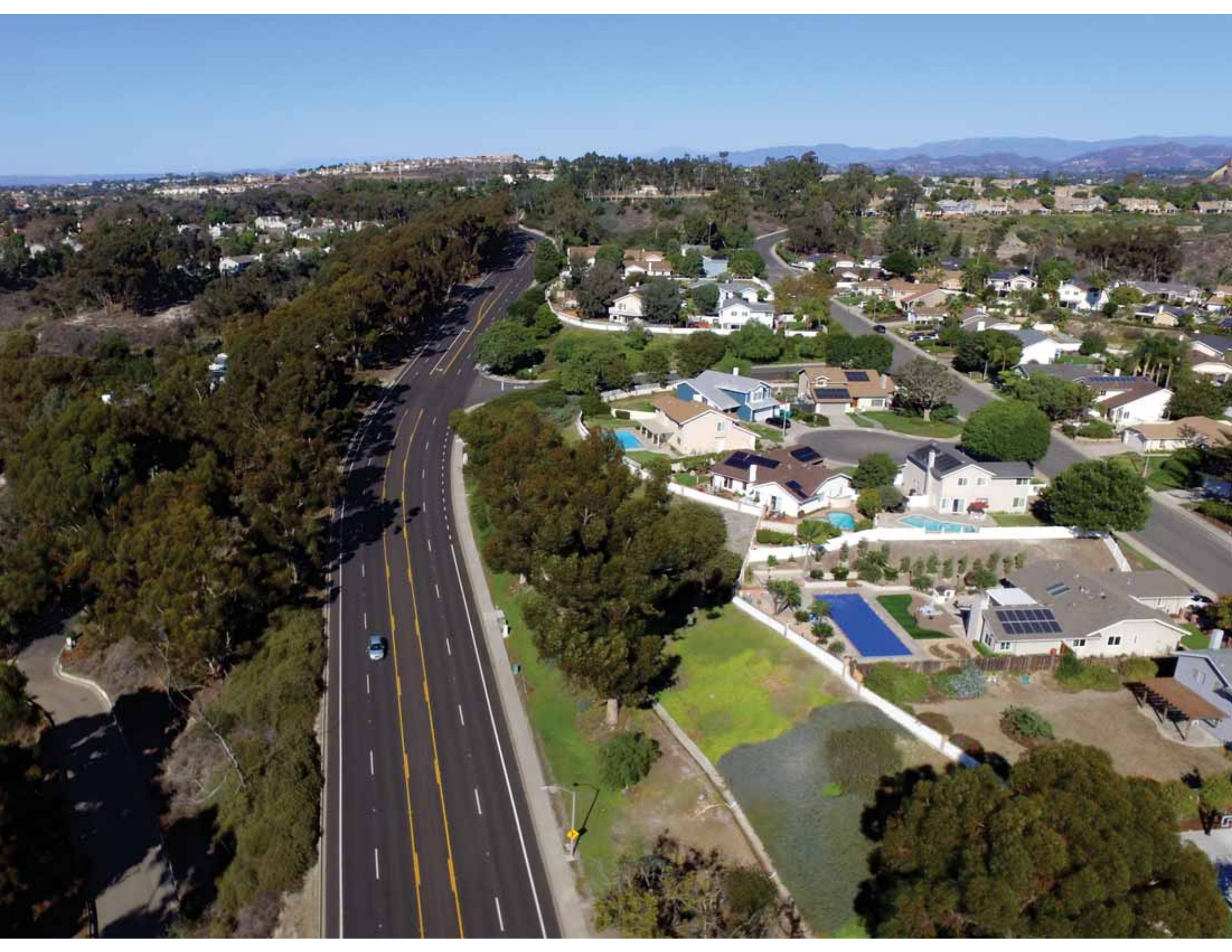
*Technical Development –
Connectivity challenges for all modes*

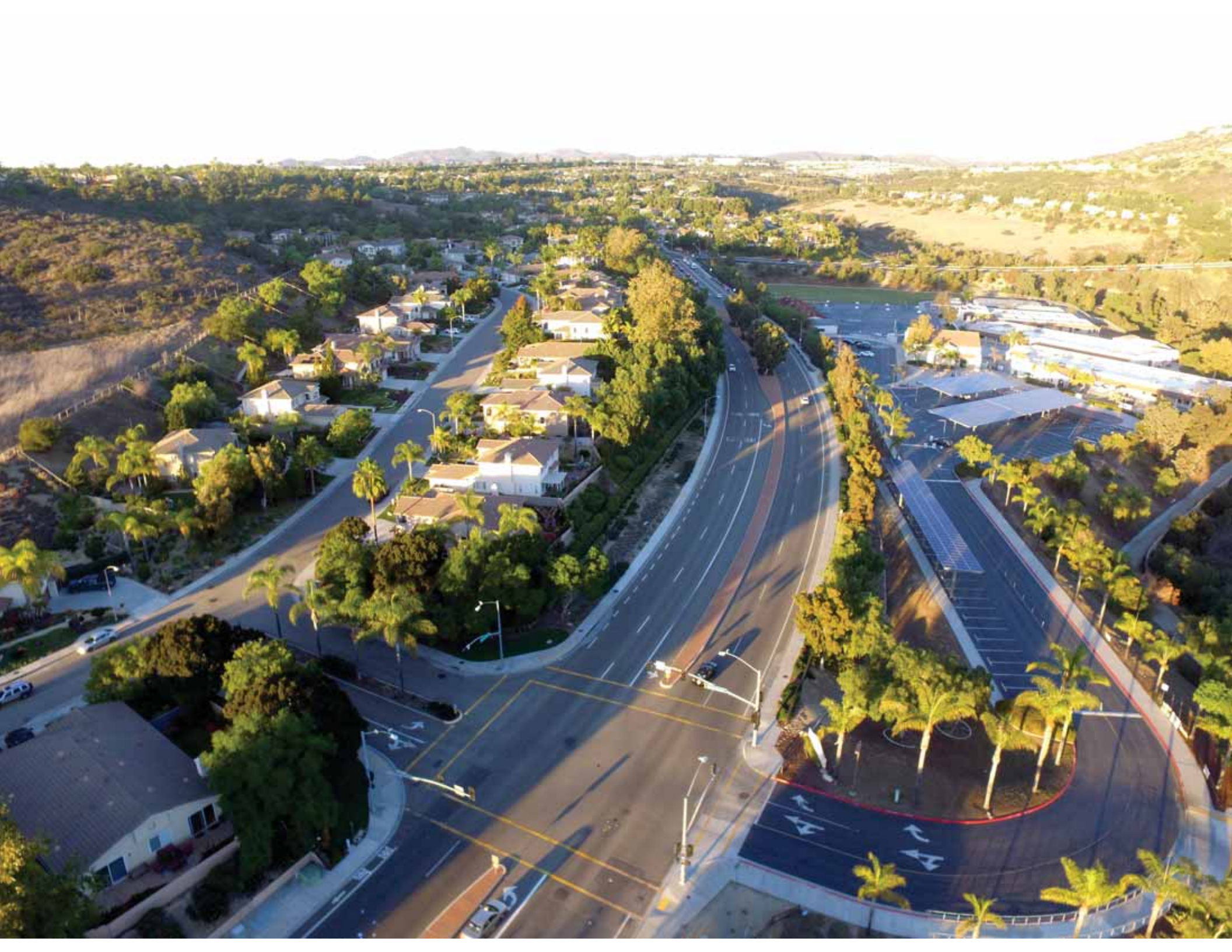












Safe Routes to School Connectivity

Jefferson ES



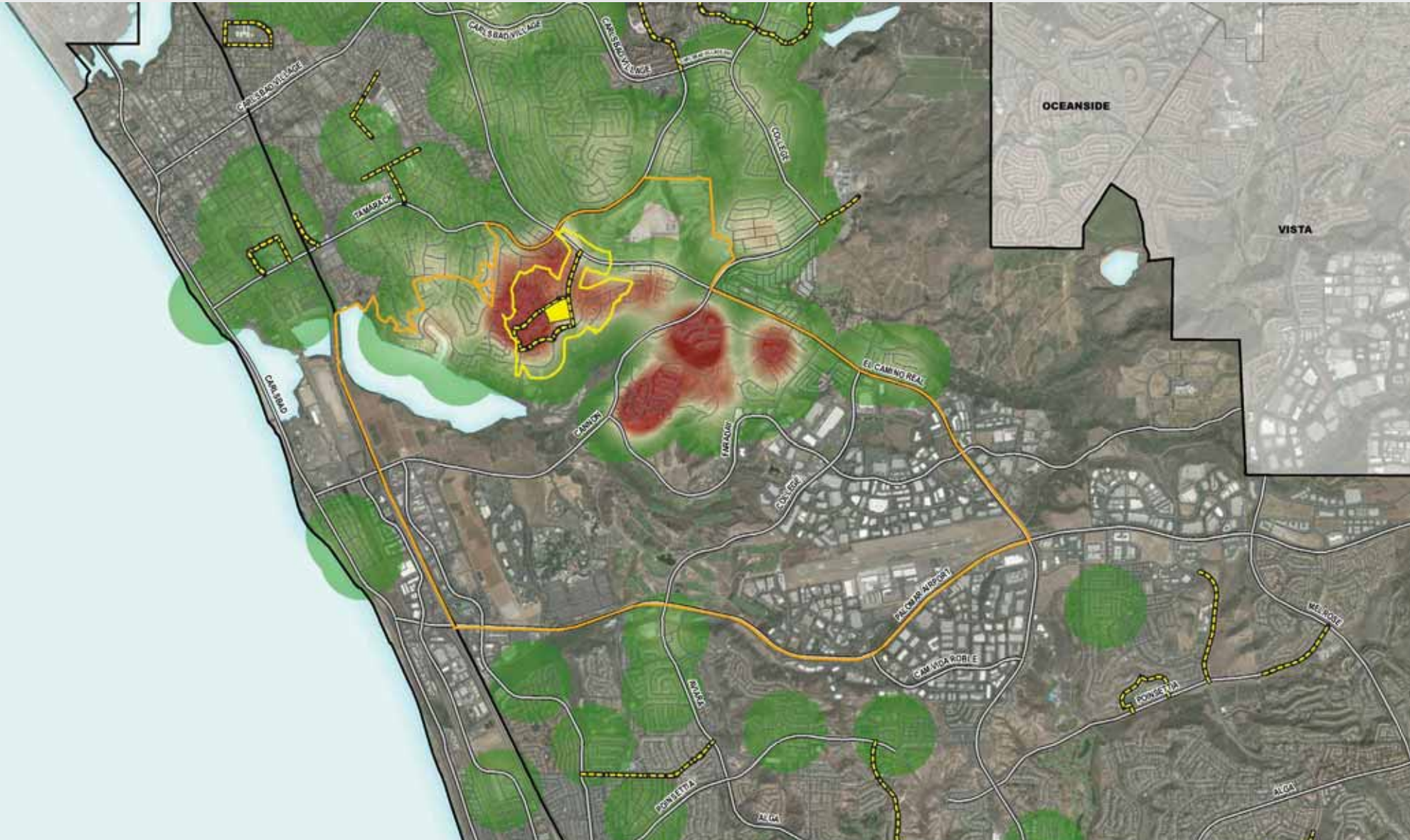
Safe Routes to School Connectivity

Poinsettia ES

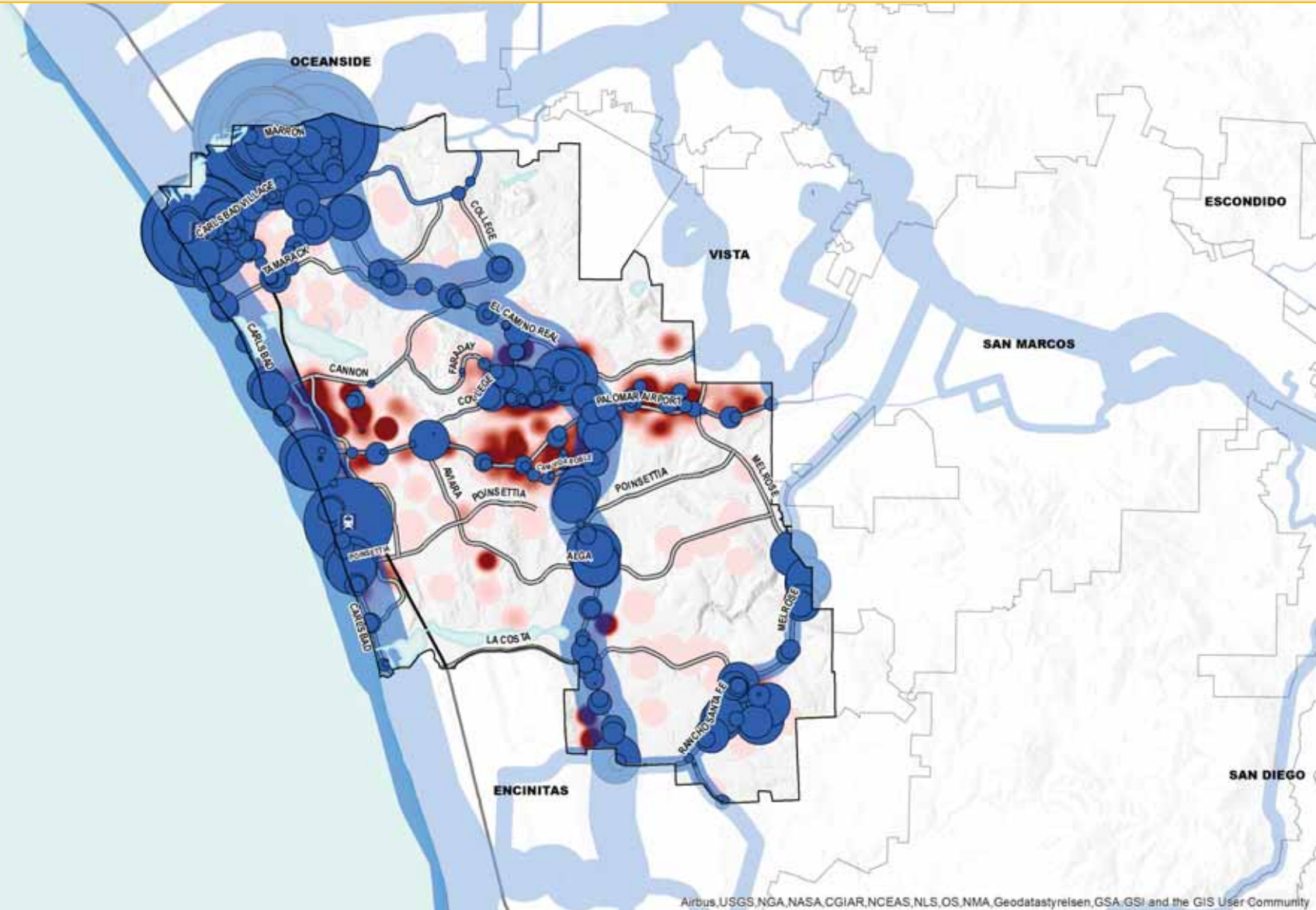


Safe Routes to School Connectivity

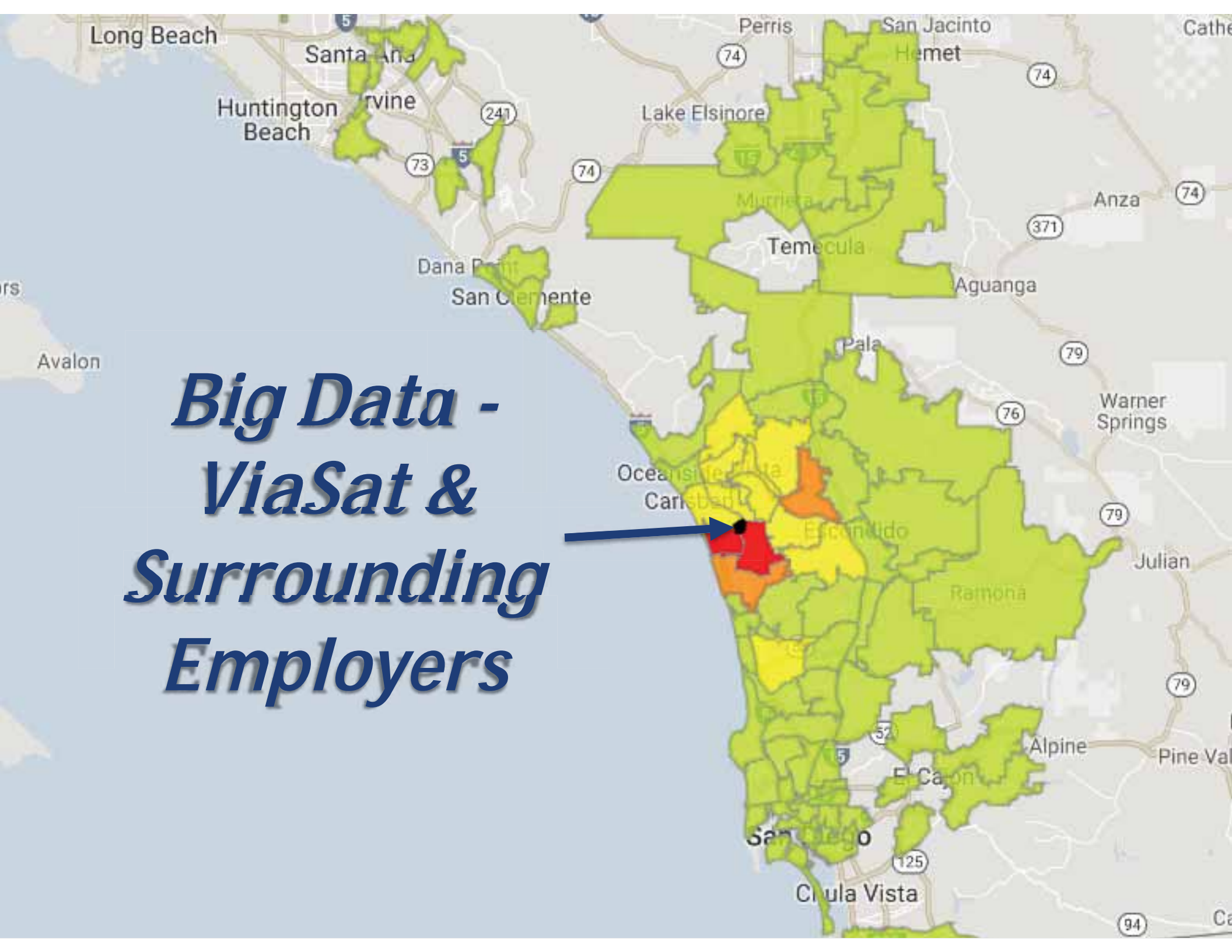
Kelly ES



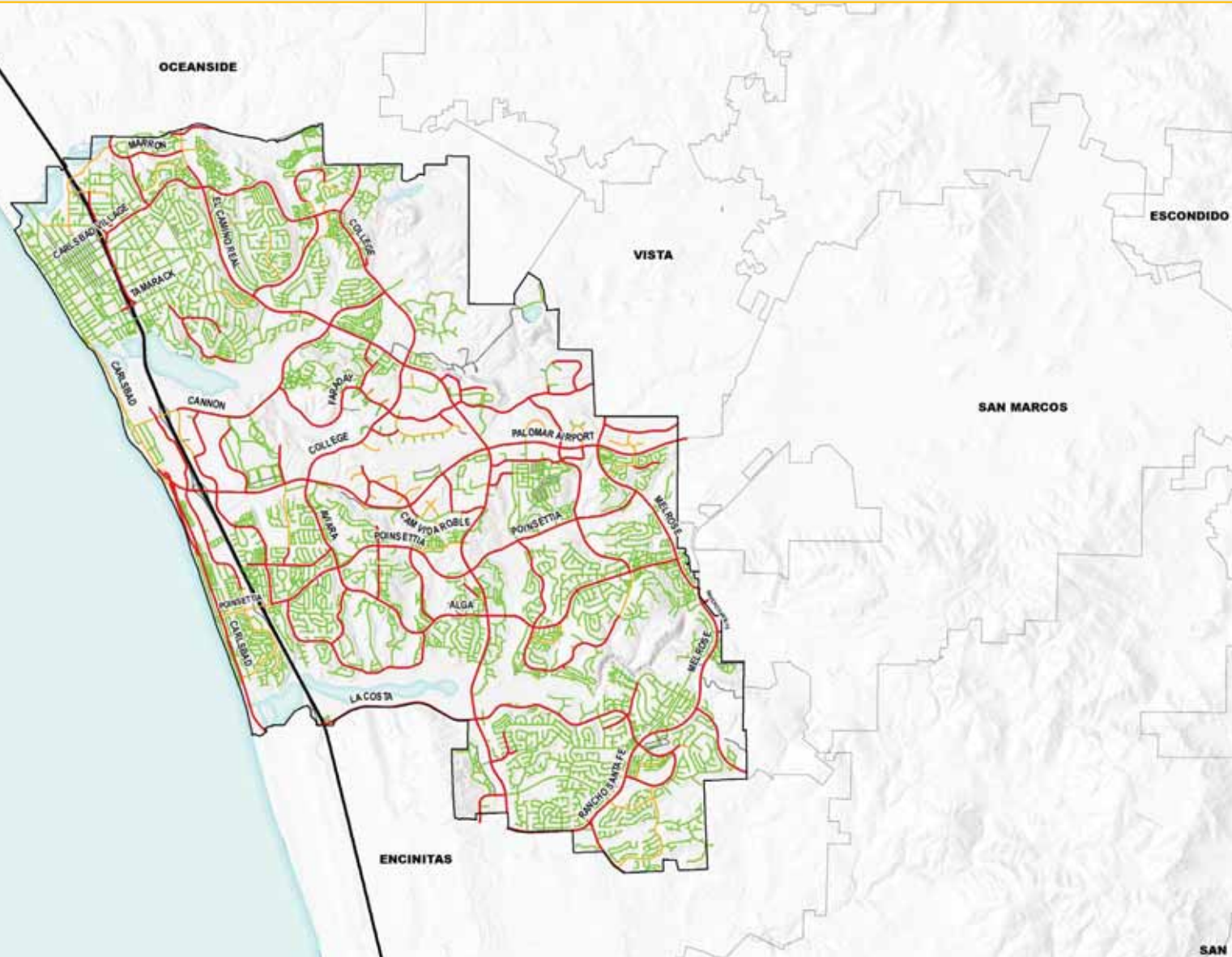
Job Access Connectivity



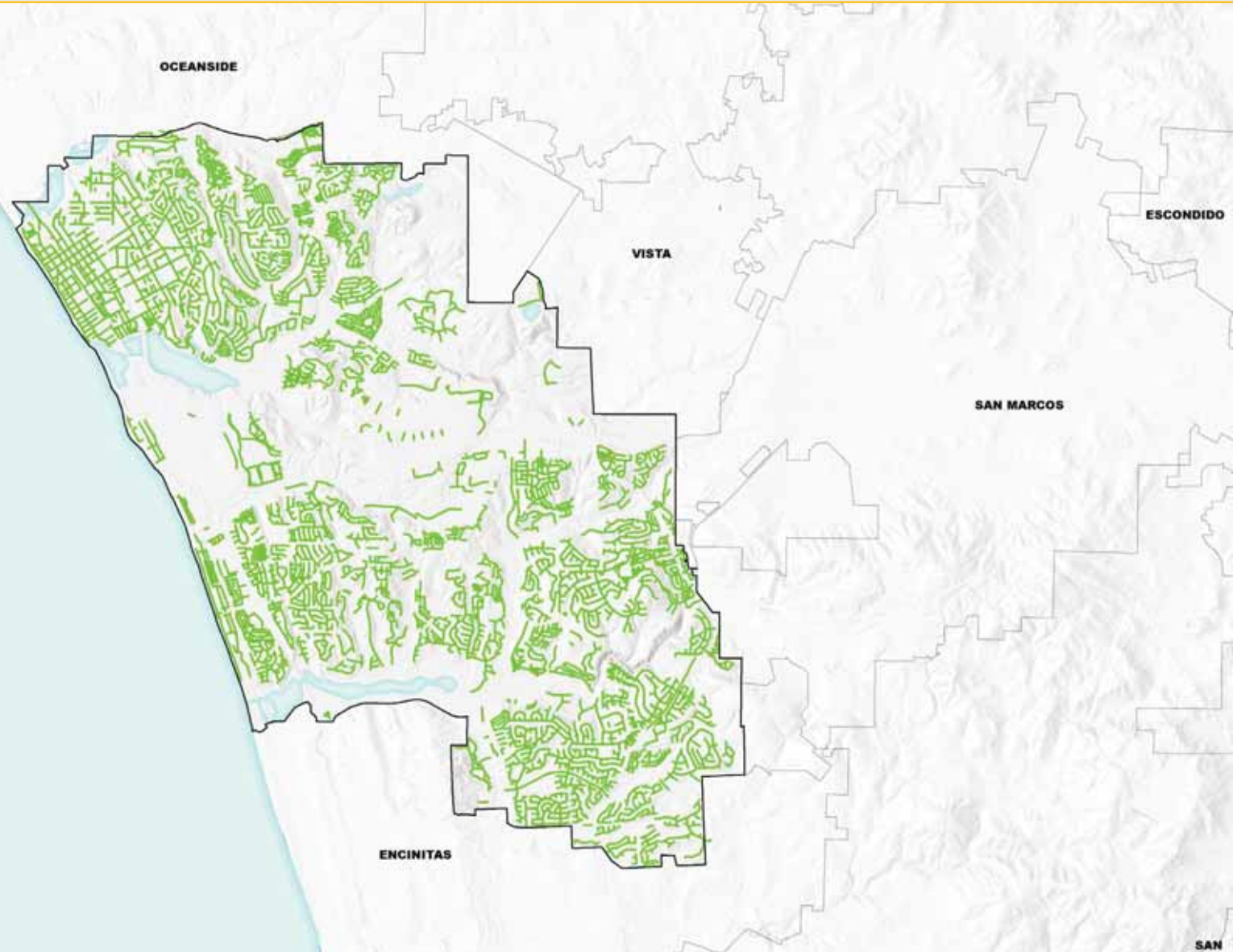
***Big Data -
ViaSat &
Surrounding
Employers***



Active Transportation Connectivity



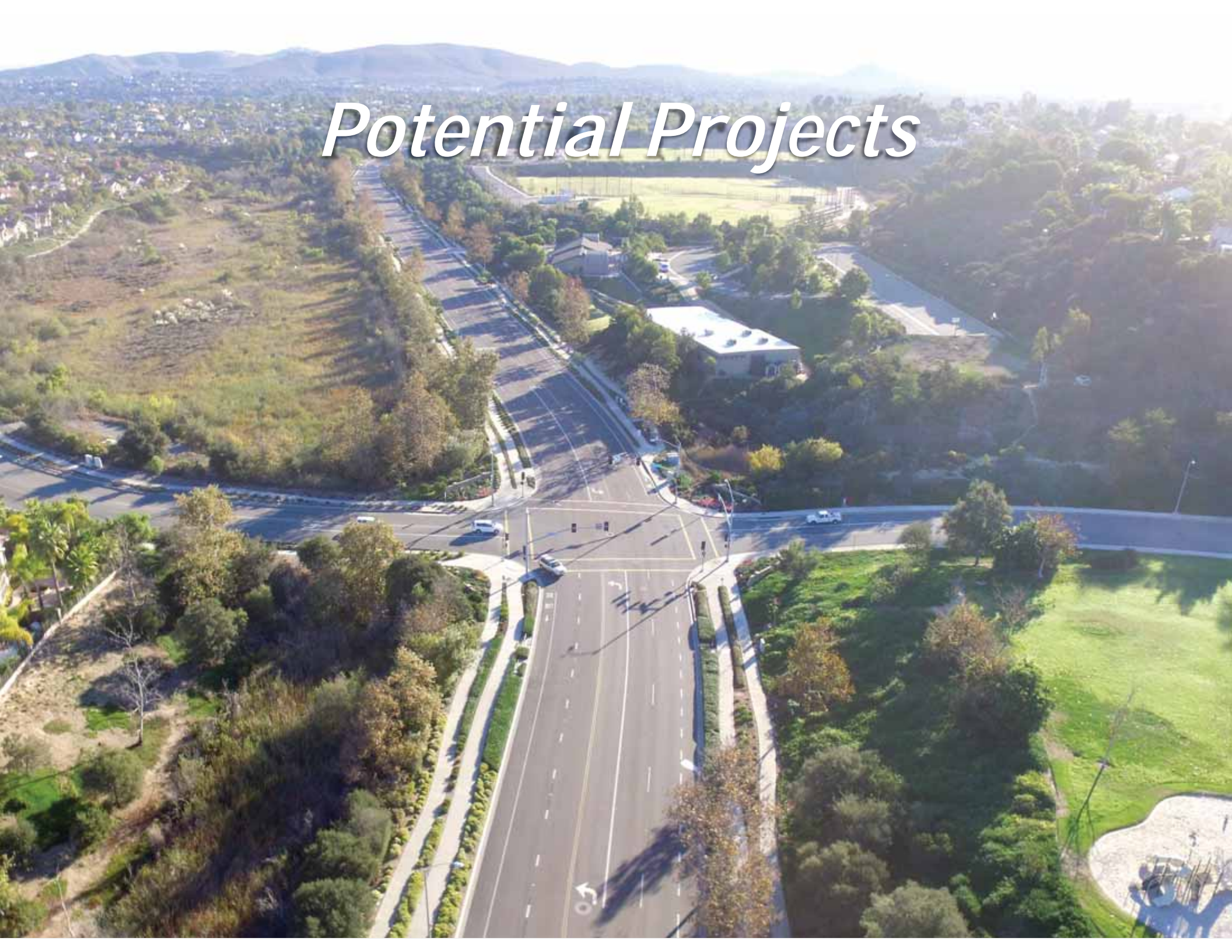
Active Transportation Connectivity



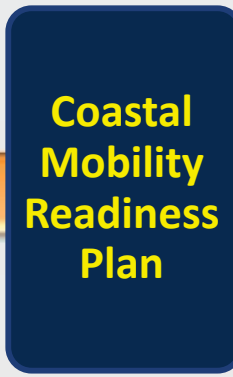
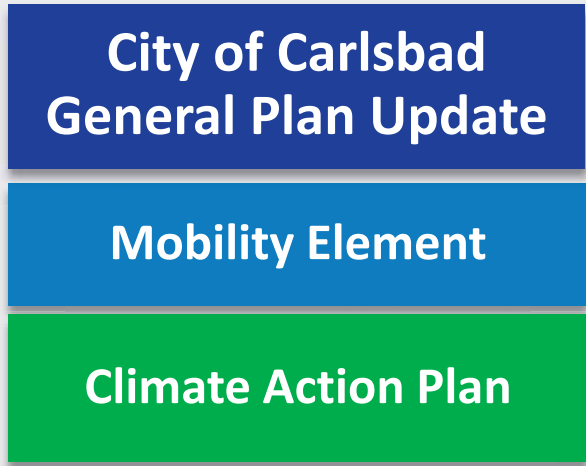
Questions?



Potential Projects



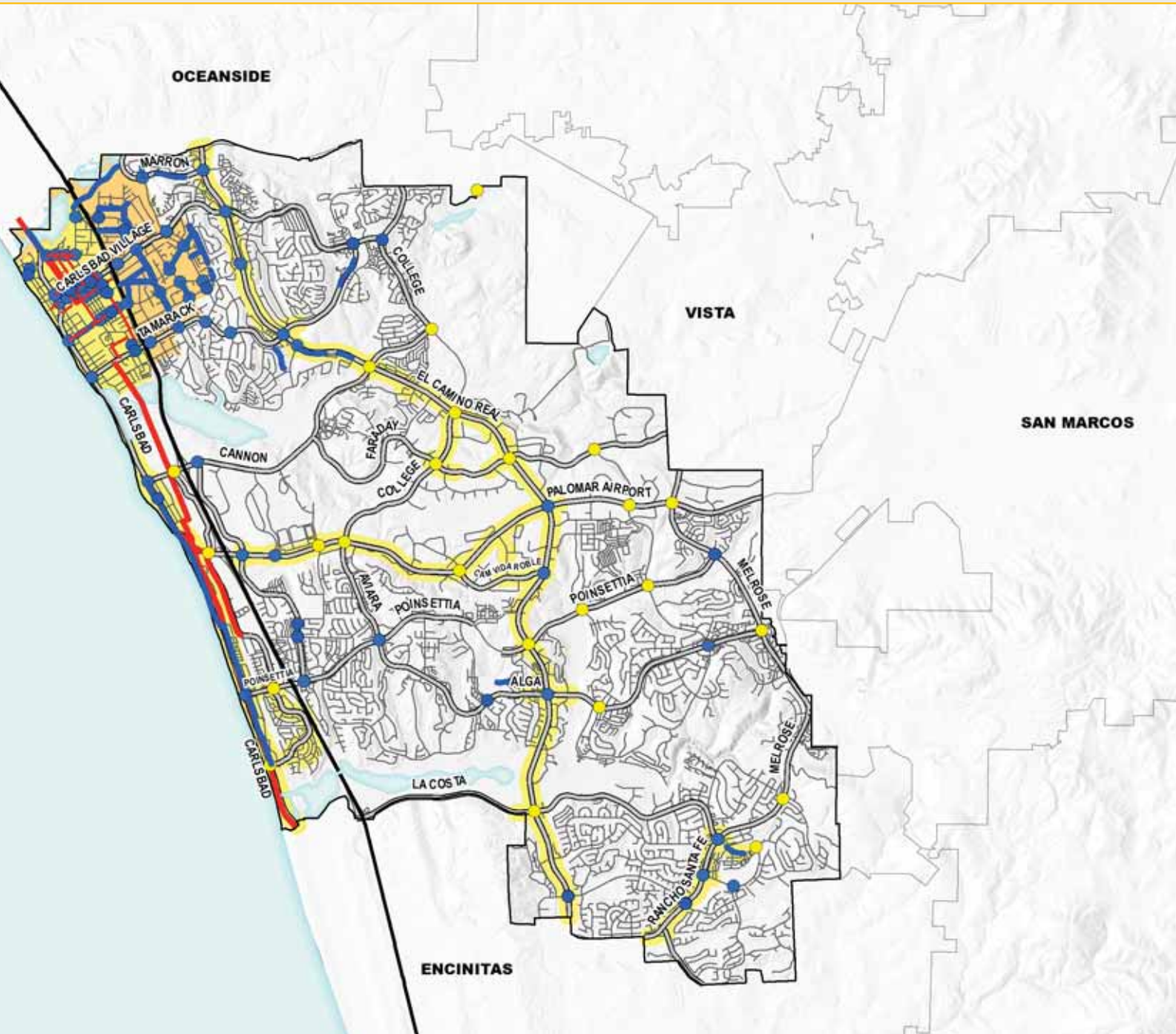
Mobility Project Planning Context



Legacy Projects – Prior to Mobility Element Adoption



Legacy Projects



Project Development



Typical Conditions – Active Transportation



Potential Solution - Protected Facilities

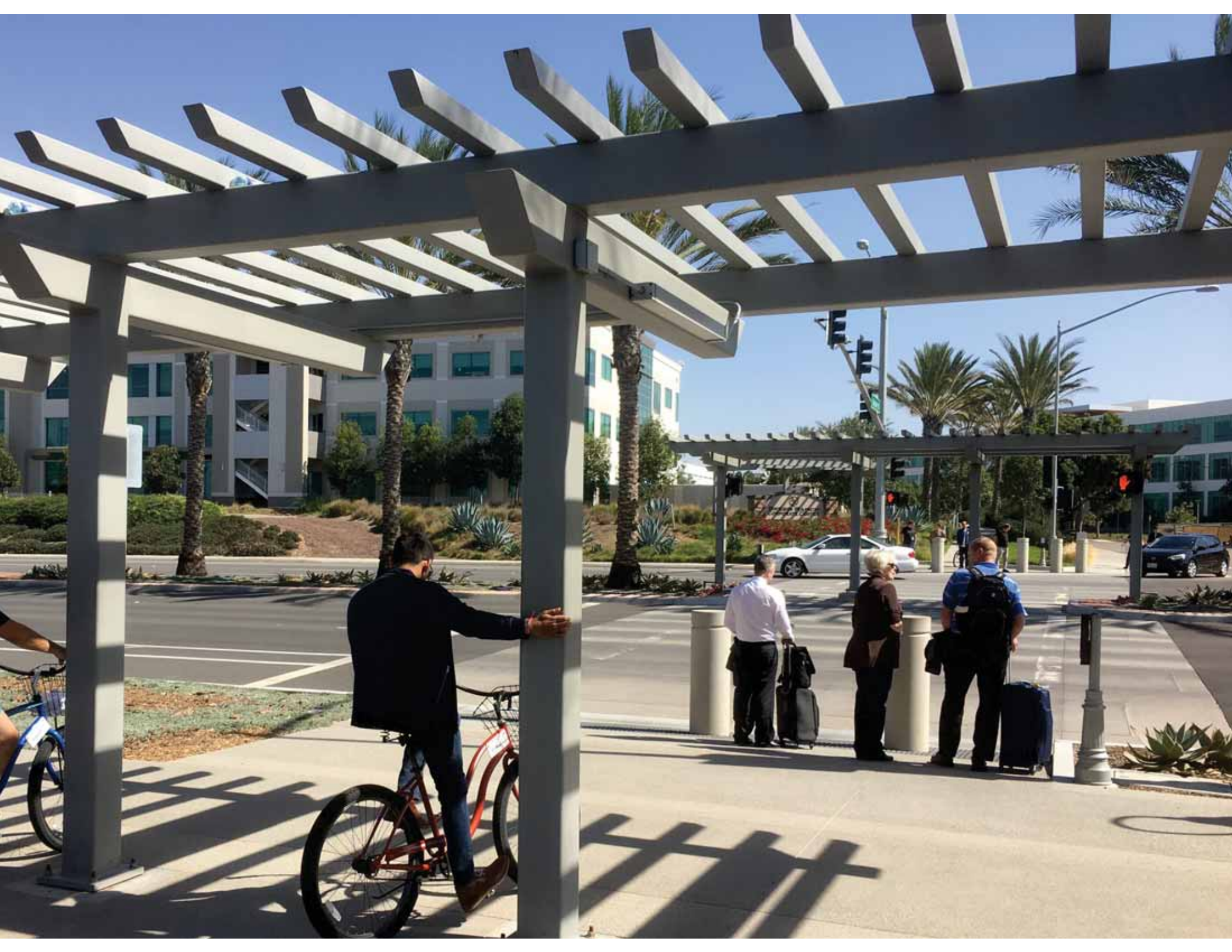






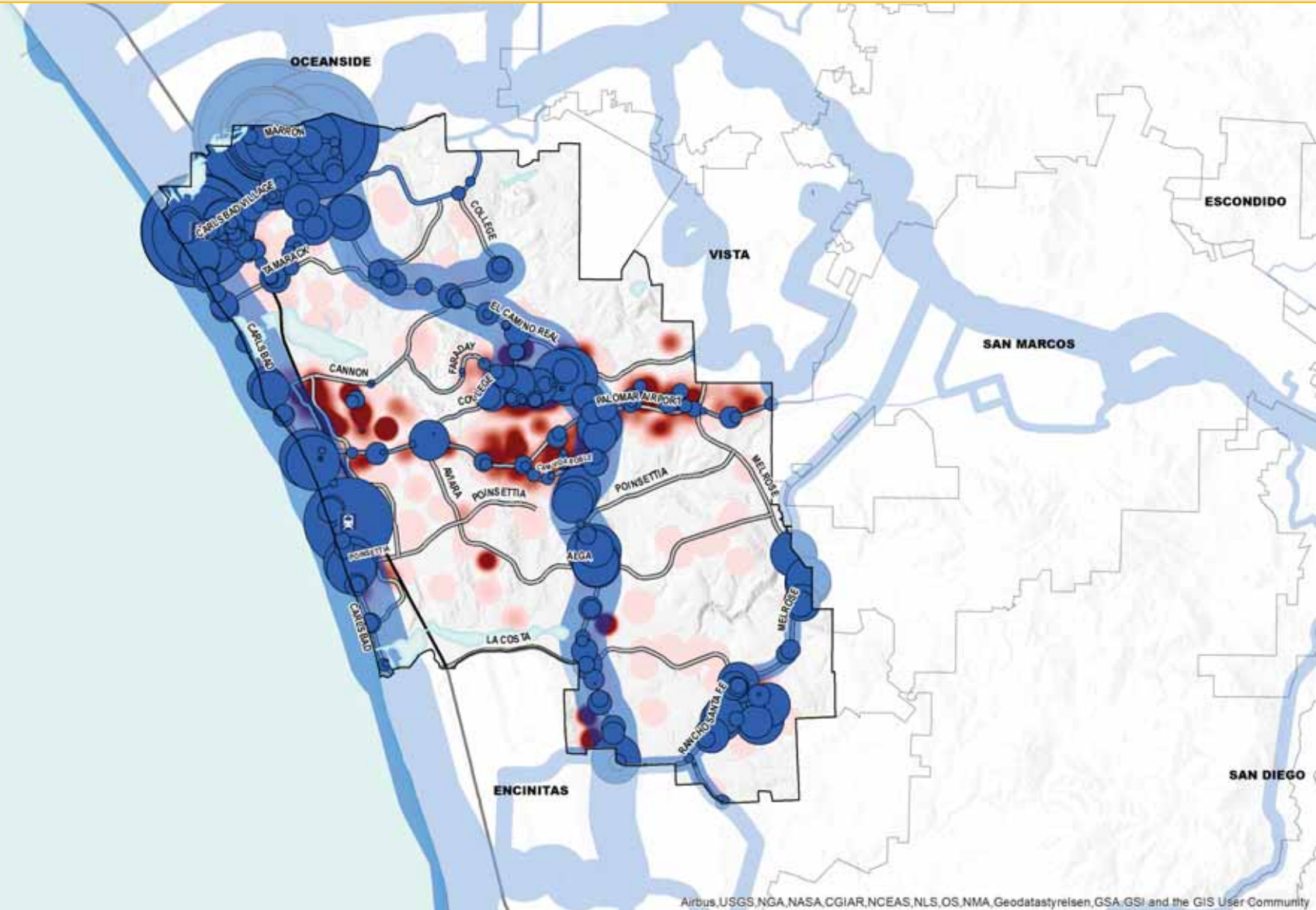
NORTH ↗







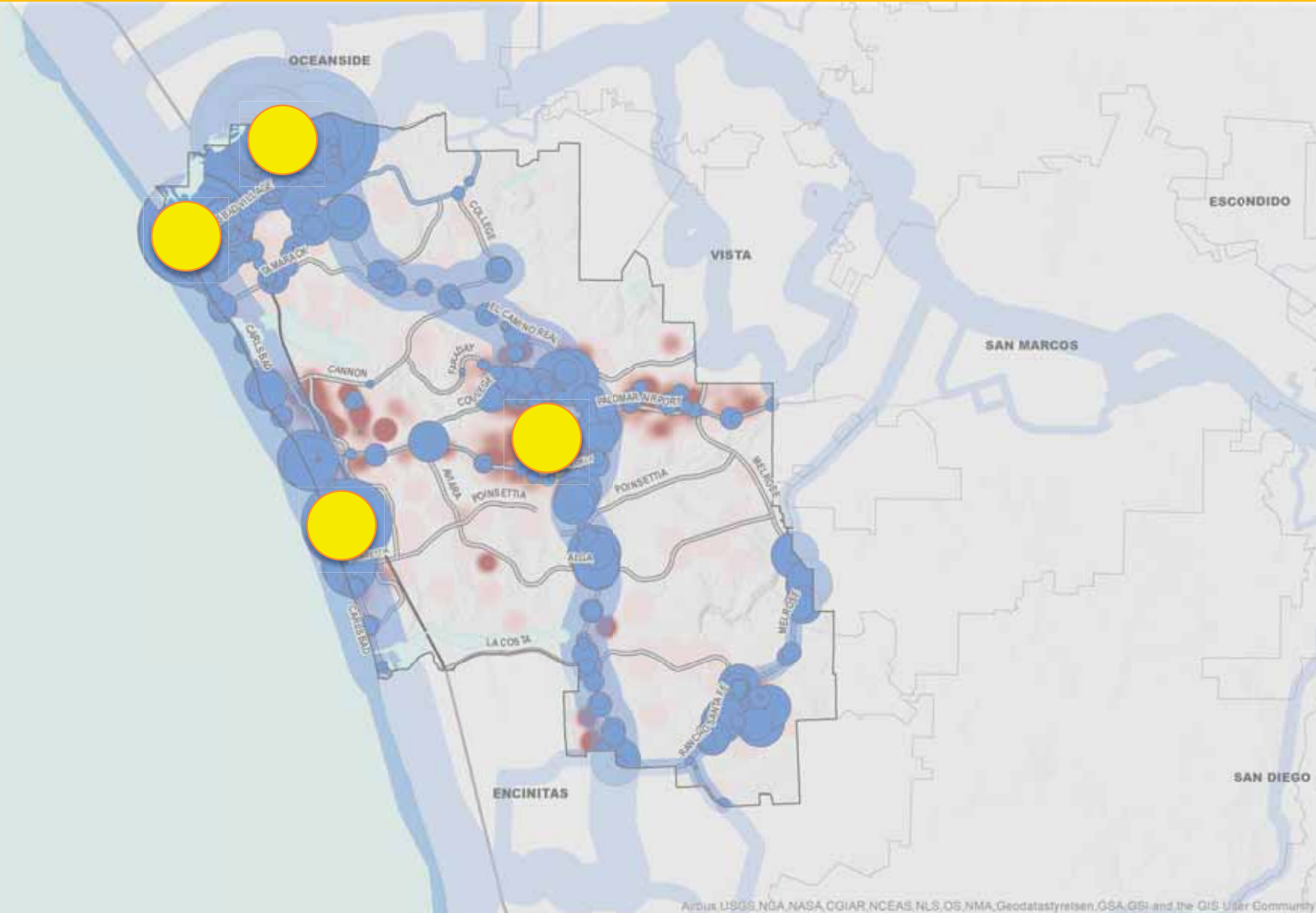
Typical Conditions – Job Access



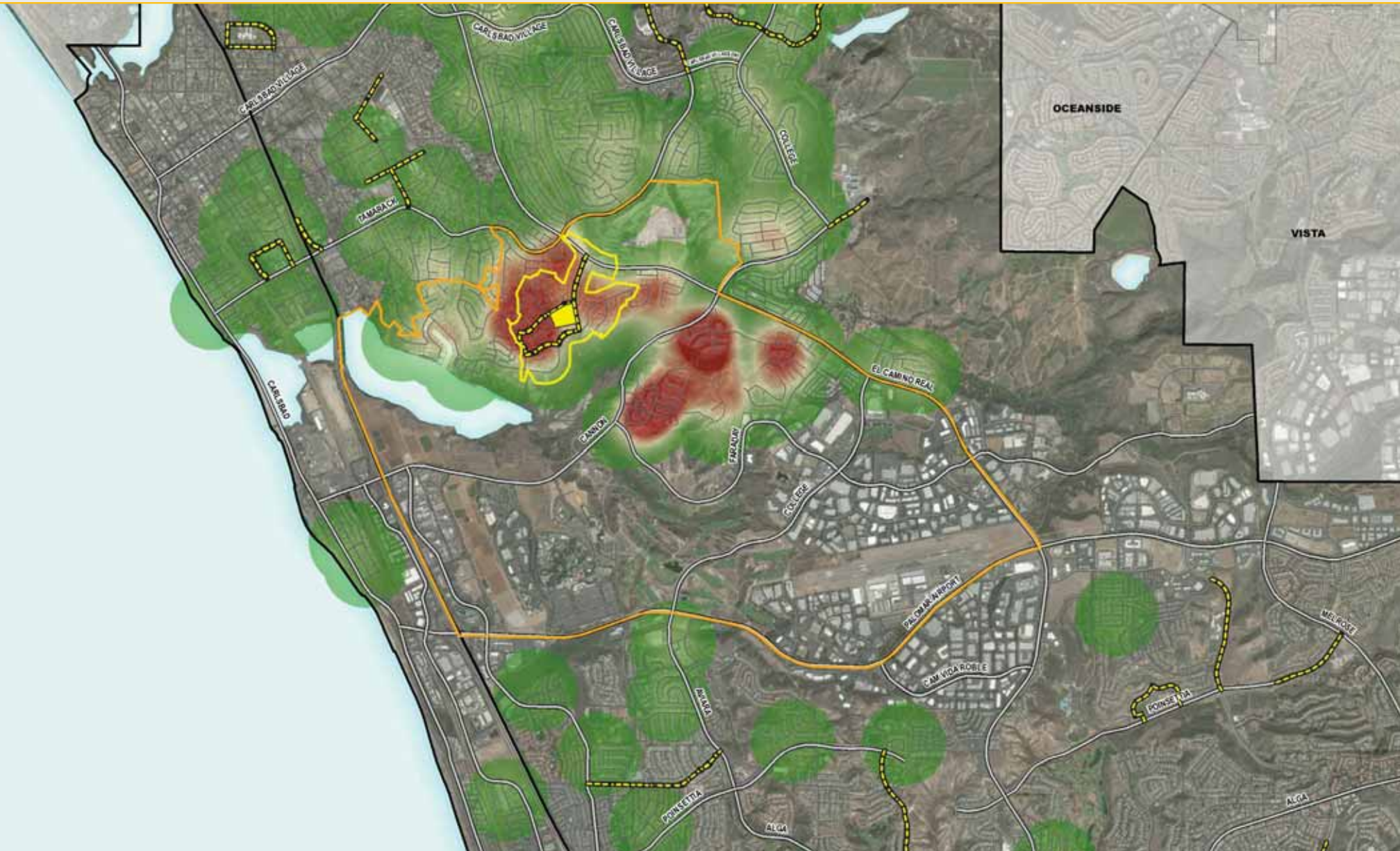
Potential Solution – Mobility Hubs



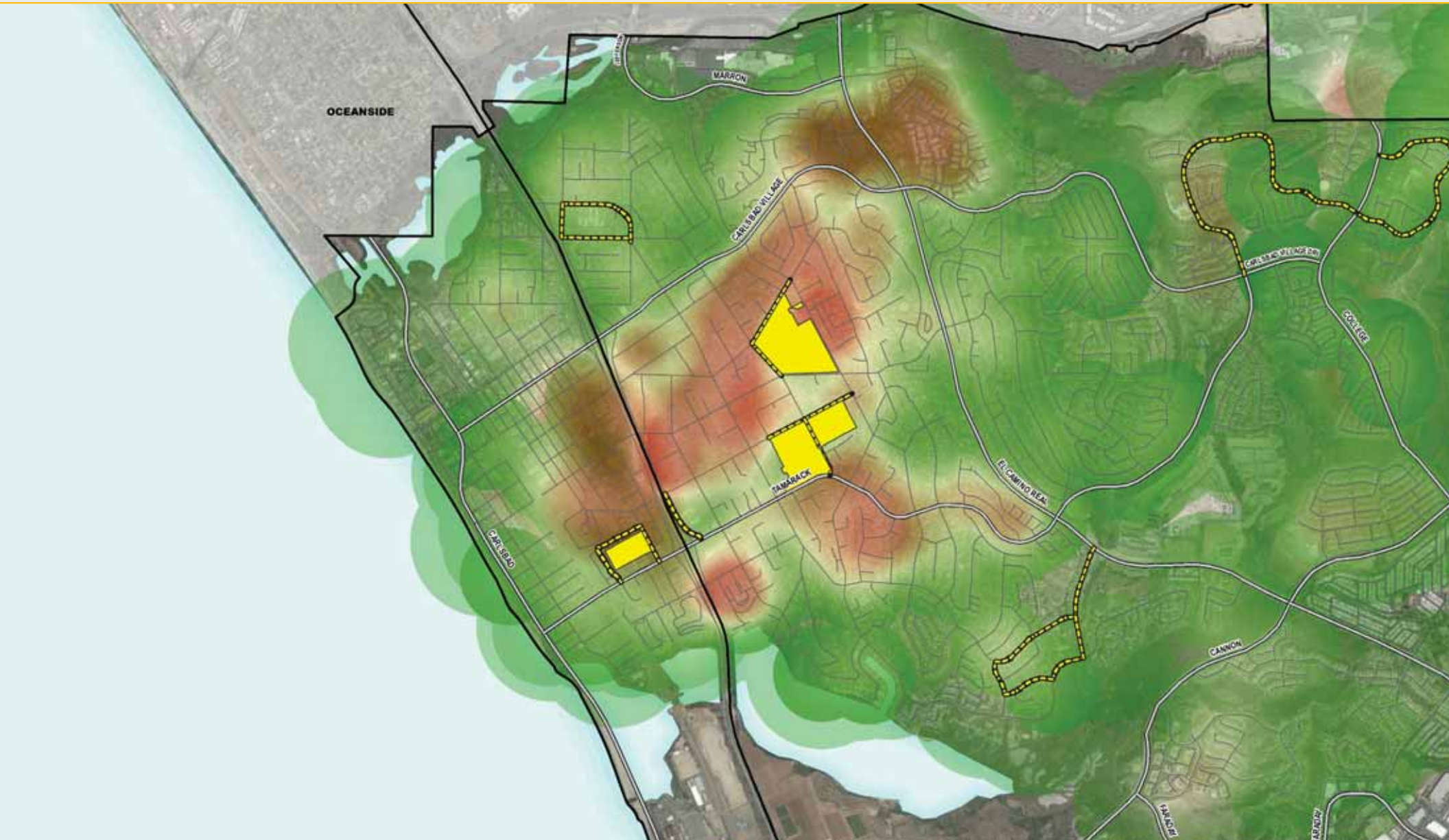
Mobility Hub Potential Locations



Typical Conditions – Safe Routes to School



Typical Conditions – Safe Routes to School



Potential Solution – “6 E’s”



Ranking Exercise



Applicable Example Criteria	Caltrans SCS	SANDAG ATP	Caltrans HSIP	Caltrans ATP	SCAG ATP	Metro TOD Planning Grants	MTC ATP Grants	SACOG ATP	SCAG Regional Corridors Grants
Gap Closure	X	X			X	X	X	X	X
Anticipated Demand/Project Need		X		X	X	X		X	X
Access to Schools, Parks, and Transit	X	X		X					
Innovation	X	X						X	
Cost Effectiveness	X	X	X	X	X			X	X
“Shovel-Readiness”	X	X	X	X	X	X	X	X	X
Social Equity	X	X		X	X		X	X	X
Geographic Distribution		X			X	X	X	X	X
Regional Significance		X		X	X	X	X	X	X
Aesthetic Improvement						X			
State GHG Reduction Targets	X	X						X	
Public Health Benefits	X	X		X	X				X
Public Support	X			X	X	X			X

Ranking Exercise

- Go to www.menti.com
- Use code 28 64 5

9:45 [mail icon] [calendar icon] [signal strength icon] [battery icon]

<https://www.menti.com> [5] [menu icon]

Mentimeter

[Practice question:] Which core values do you believe are "quintessential Carlsbad?"

Small town feel, beach community character and connectedness

-10 +10

100 points left

Open space and the natural environment

-10 +10

[back arrow] [home circle] [recent apps square]

Digital Outreach

Chester County Comprehensive Plan Public Survey

Progress

2 Topics most important to you.

WELCOME

IDENTIFY TOPICS

- 1 Healthy Lifestyles
- 2 Guiding Growth
- 3 Modern Infrastructure
- 4 Open Space & Environment

Order your top 5 items
↑ above this line ↑

- Housing Options
- Transportation Choice
- Vibrant Economy
- Sense of Place

Open Space & Environment

Preserve woodlands and streams and trails, and protect farmland

3 PREFERENCES

4 PREFERENCES

5 INVOLVED

Chester County Comprehensive Plan Public Survey

Progress

3 Rate your preferences

WELCOME

IDENTIFY TOPICS

YOUR PREFERENCES

- Healthy Lifestyles
- Guiding Growth
- Modern Infrastructure
- Open Space & Environment

Preference for supporting healthy lifestyles

- Multi-Use Trails
- Fresh Healthy Food
- Emergency Services
- Accessible for All
- Supportive Services

Multi-Use Trails

Linking communities through recreation and transportation options

Please rate this concept from 1 star (least preferred) to 5 stars (most preferred)

★ ★ ★ ★ ★

Previous Optional Comment Next

4 MAP PREFERENCES

5 STAY INVOLVED

Questions & Discussion



Presentation Schedule



Sustainable Mobility Plan

Questions?

www.carlsbadca.gov

Search "SMP" or "Sustainable Mobility Plan"

Sustainable Mobility Plan

Stakeholder Working Group Meeting #2