

AT-HOME ART PROJECT: Groundbreaking Girls **INSTRUCTIONS**



INSPIRATION ARTIST:

Allison Adams (Currently based in San Clemente, CA)

Allison Adams is a painter who trained at art school to be an actress, but was torn because she also wanted to study painting. Adams was interested in studying and portraying characters: whether as an acting role or through a portrait. “My parents are working artists, so over the years, I began to lean more and more toward painting, learning from my dad, taking classes, and eventually giving up my acting career completely in the name of painting.”

“*Groundbreaking Girls*” by Allison Adams is a series of portraits of over 200 influential women from history. This project began as a search for inspiration. Allison Adams was recently widowed, and as she began to focus on the next chapter of her life found strength and empowerment in the stories of trailblazing women through history.

“Through my work, I hope to capture something of the spirits of these women who would certainly be cheering us on today. As we listen to their voices and look into their eyes, we are reminded of our heritage as women and girls: passionate, courageous, determined, innovative, intelligent, creative, caring, fierce.”



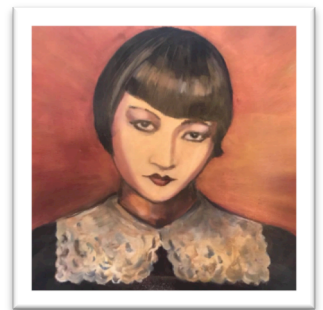
Greta Thunberg



Nanyehi



Dolores Huerta



Anna May Wong

MATERIALS NEEDED FROM HOME:

- Printed COPY of a photo of an inspiring woman’s portrait (head & shoulders)
(An original photo cannot be used as the copy will be written on and thrown away)
- Pencil
- Pencil Sharpener (if available as needed, not essential)
- Black Pen or Marker

ARTS EDUCATION PROGRAM

LESSON PLAN

- White 8.5"x 11" Paper (1 piece)
- Colored pencils, Crayons or Markers
- Paper Clips (Qty. 2, if available)

ART PROJECT DESCRIPTION:

Participants will create a work of art inspired by Allison Adams series *"Groundbreaking Girls"*, portraits of influential women from history. Artists will consider a woman that they admire and that inspires them, and draw a portrait version to honor this person, focusing on Adams representational painting ideas and style.

PROMPT QUESTIONS:

1. Why do you think it is important for Allison Adams to paint these significant women's portraits?
2. Think about the women in your life or ones you have learned about, which ones stand out to you? Why?
3. Why would you want to paint someone's portrait?

ART MAKING PROCESS:

Step 1:

PREP: Think about and choose a woman that inspires you. Find a photo of that woman from the shoulders up (a portrait) either online or in a book or magazine. Scan or print a copy of the photo (color print preferred, but black and white can also be used).

Step 2:

Take a moment to look at the examples from Allison Adams *"Groundbreaking Girls"* portrait series, with the diversity of women painted, their different times and places in history, and how some are part of current life. Consider the style Adams uses in her paintings- they are not photorealistic but are recognizable faces. Adams uses lines, color shading and strong forms within each portrait. Some have plain backgrounds, and some are patterned. Consider these ideas when creating your work of art.

Step 3:

To begin, use your pencil and the printed photocopy of the woman you chose to work with (FIG. 1). Turn over the copy to the blank side and using your pencil fill-in (shade-in) the entire area behind the photo with pencil lead coloring (FIG. 2). Press down firmly as you color in the area, so there will be plenty of lead on the paper when you are finished.

Step 4:

Once there is plenty of lead on the back side of your photocopy, get your blank piece of white paper and lay the photocopy on top of the blank white paper, with the pencil shaded side down (FIG. 3). TIP: if you have paper clips, clip the papers together at the top of the pages. If no paper clips are available, be extra careful holding the papers together so they don't move as you do the next step.

Step 5:

If you have a pencil sharpener, sharpen your pencil at this point for better tracing. Use the pencil to carefully trace over some of the lines on the photo without moving the paper, be sure to press down firmly when tracing. Areas to consider and focus on: eyes, nose, mouth, shape of face, shape of head/hair and shoulders/top of clothing. You will not need to trace every detail, use your artist's eye to select lines to trace, and to leave out lines that are not needed (FIG. 4). Try not to separate the 2 papers until you are completely done drawing the lines you want in your portrait.

LESSON PLAN

Step 6:

Once you have finished adding the lines for your portrait, lift off the photocopy and set it aside. Your white paper should now have the lead lines on it that you traced (FIG. 5).

Step 7:

Using your marker(s), darken the lead lines (FIG. 6).

Step 8:

Using crayons or colored pencils, fill in large areas of color on your portrait (FIG. 7). Consider adding areas of darker color to add depth, shading, and emphasis to your portraits (FIG. 8). Think about if you'd like to add a background to your work of art, and what it might look like (FIG. 9).

POST PROMPT QUESTIONS:

1. What did you learn about from the art experience of creating someone's portrait?
2. What does your final work of art make you think about?
3. What other inspiring women do you think would be interesting to learn about and draw their portrait?

EXAMPLES:

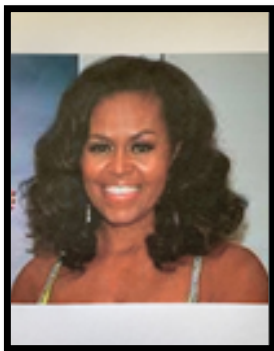


FIG. 1

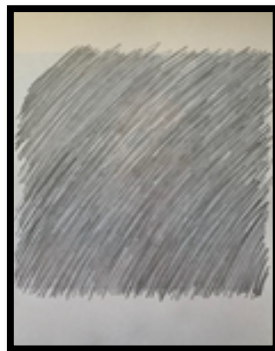


FIG. 2



FIG. 3

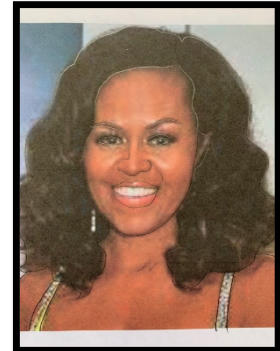


FIG. 4



FIG. 5

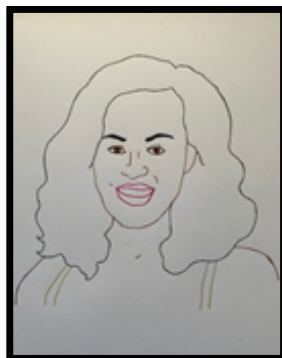


FIG. 6



FIG. 7



FIG. 8

LESSON PLAN

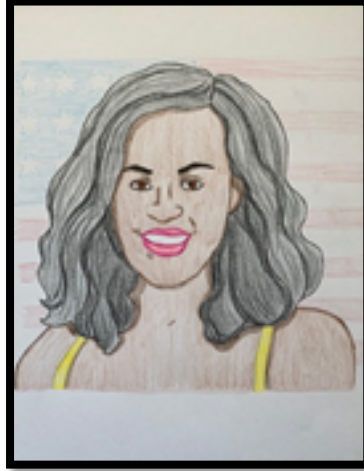


FIG. 9

EXTRA FUN:

Optional Writing Project: Write about the woman you chose for your portrait. Why did you choose her? How does she inspire you? What is it about her life that you find meaningful?

SOURCES:

<http://sdvoyager.com/interview/conversations-inspiring-allison-adams/>

<https://www.groundbreakinggirls.com/about>

<https://womensmuseum.wordpress.com/2019/01/30/groundbreaking-girls/>

http://pzartfulthinking.org/?page_id=2