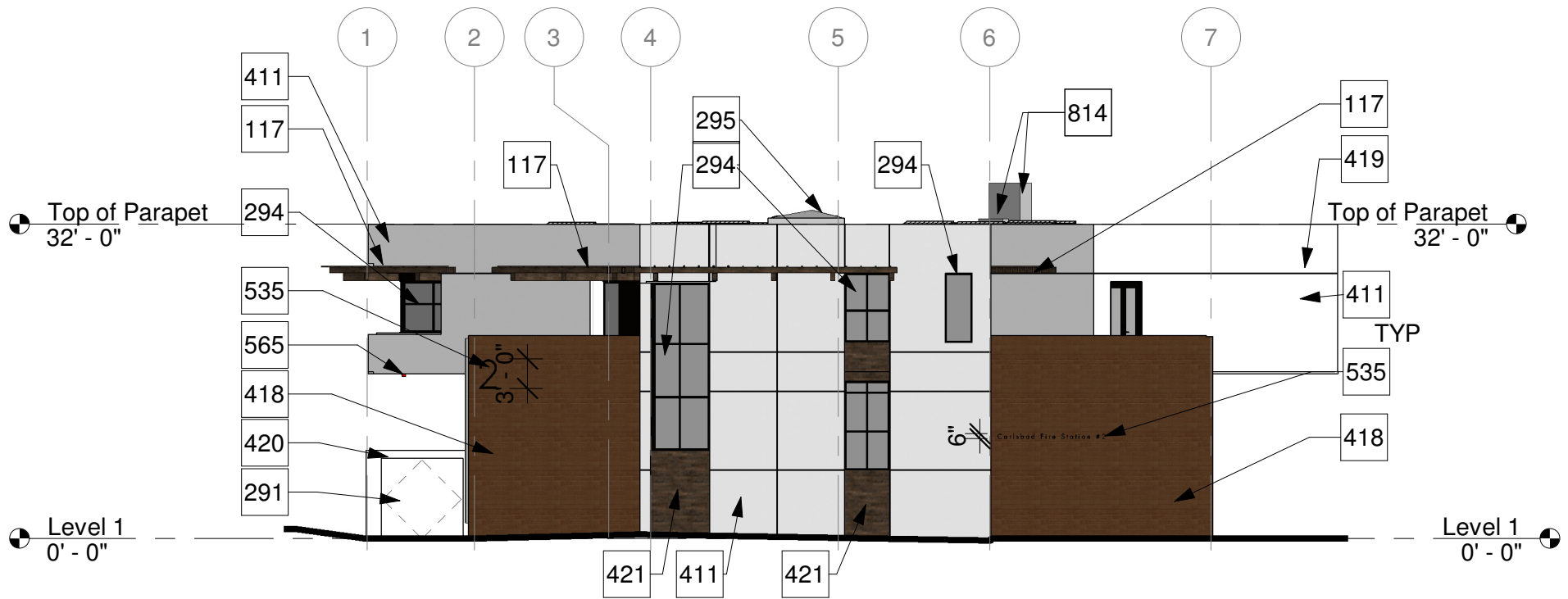


1 West Elevation - El Camino Real
 1/16" = 1'-0"

Notes

- 117 Wood Trellis
- 292 Window per plan and schedule
- 294 Bronze storefront system
- 295 Skylight
- 411 Stucco
- 418 Terra cotta exterior tile cladding
- 420 Stucco over CMU site wall, see civil
- 421 Wood veneer
- 535 Building signage
- 814 Condensing units, see mechanical

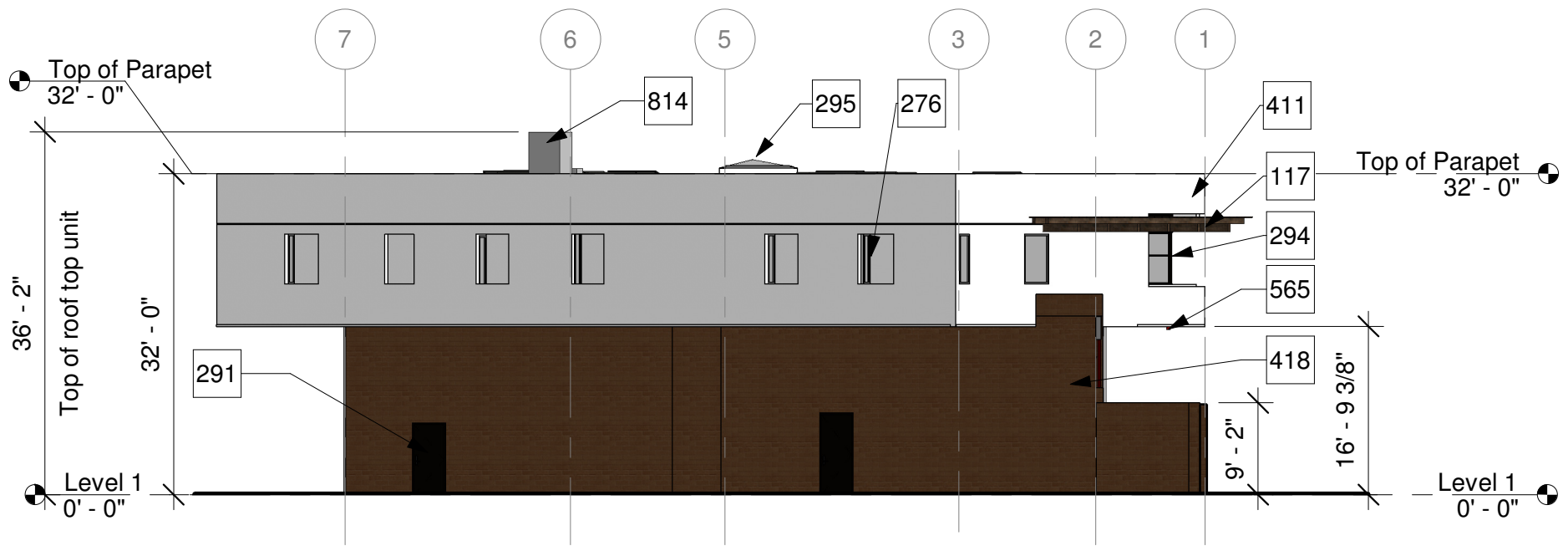


1 South Elevation - Arenal Road

1/16" = 1'-0"

Notes

- 117 Wood Trellis
- 291 Door per plan painted to match bronze storefront
- 294 Bronze storefront system
- 295 Skylight
- 411 Stucco
- 418 Terra cotta exterior tile cladding
- 419 Stucco reveal
- 420 Stucco over CMU site wall, see civil
- 421 Wood veneer
- 535 Building signage
- 565 Fire Warning Light
- 814 Condensing units, see mechanical

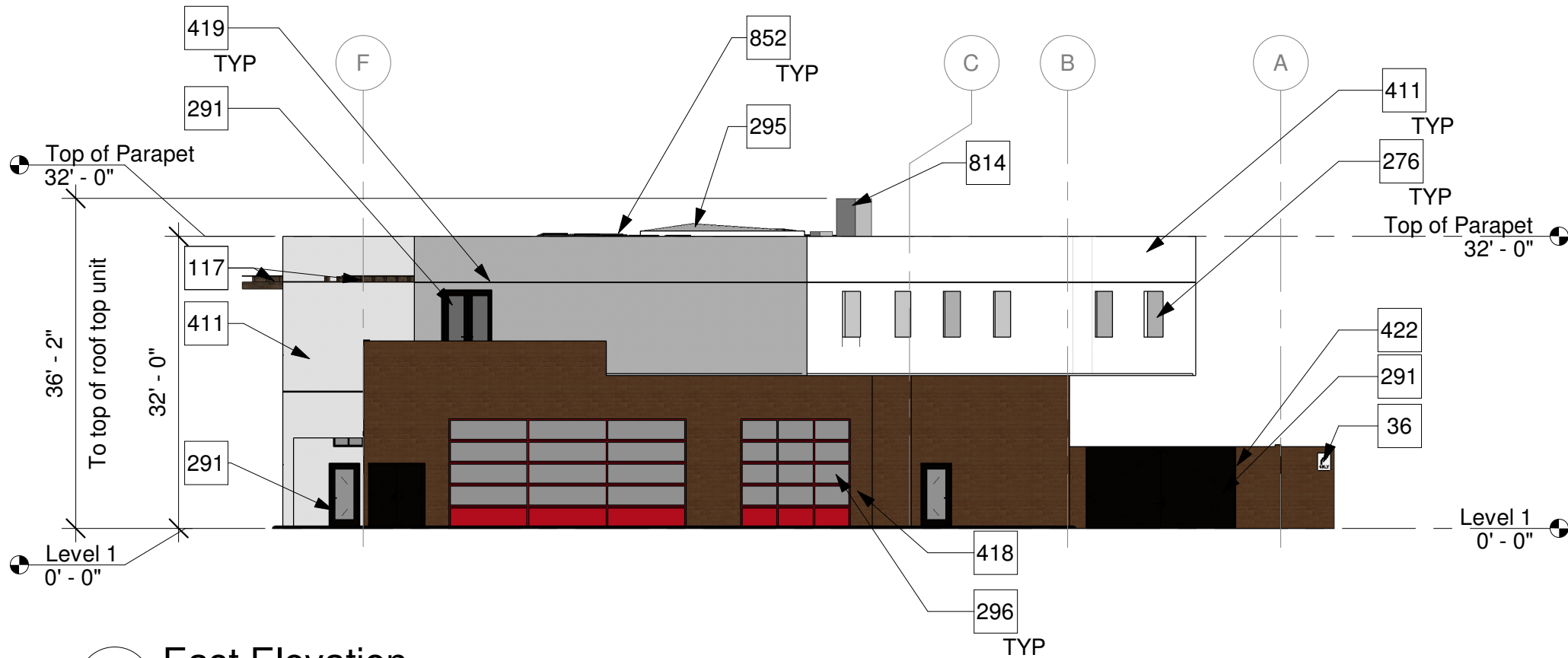


1 North Elevation

1/16" = 1'-0"

Notes

- 117 Wood Trellis
- 276 Window Recess
- 291 Door per plan painted to match bronze storefront
- 294 Bronze storefront system
- 295 Skylight
- 411 Stucco
- 418 Terra cotta exterior tile cladding
- 565 Fire Warning Light
- 814 Condensing units, see mechanical



1 East Elevation
 1/16" = 1'-0"

Notes

- 36 Right turn only signage
- 117 Wood Trellis
- 276 Window Recess
- 291 Door per plan painted to match bronze storefront
- 295 Skylight
- 296 Sectional Doors per plan
- 411 Stucco
- 418 Terra cotta exterior tile cladding
- 419 Stucco reveal
- 422 CMU Site retaining wall, See civil for wall heights
- 814 Condensing units, see mechanical
- 852 Photovoltaic Panels