



Preserve Management and Efforts to Conserve the San Diego Thornmint and Thread-leaved Brodiaea

SDHC

Kathleen Pollett
Vince Rivas

March 2021

Quarry Creek Preserve

Volunteer cleanup efforts

Buena Vista Creek and El Salto Falls



Quarry Creek Preserve

Volunteer cleanup efforts

Buena Vista Creek and El Salto Falls



Removed > 3,300 pounds of trash!
Next cleanup: April 24th



Laurel Tree Lane

Encinas Creek

- Detected Polyphagous Shot Hole Borer (*Euwallacea* sp.) in 2020.
- County implementing grant from California Department of Forestry and Fire Protection (CAL FIRE)
- County detected and Fusarium sp.
- Meeting onsite today to discuss plan.
- Future –Inoculate cuttings with probiotic developed by Dr. Eskalen (specialist) and hope to replant the area with resistant willows.



Regional Vicinity Map
Laurel Tree Lane Preserve
Figure 1

Emerald Pointe Preserve

San Diego Thornmint (*Acanthomintha ilicifolia*)

- Partnering with San Diego Zoo Native Seed Bank to collect seed for reserve.
- San Diego Management and Monitoring Program agreed to fund seed bulking for seed collected last year.

Pacific Ecological collaboration

- Restoration plan for *Brassica nigra* infestation.



Pacific Ecological Foundation
Emerald Pointe Preserve
CONCEPTUAL
HABITAT
RESTORATION
PLAN

July 2020

Carlsbad Raceway Preserve

San Diego Thornmint (*Acanthomintha ilicifolia*)

Population expansion effort

Partnered with San Diego Zoo to collect seed for Preservation

SDMMP funding bulking



Bressi Ranch Preserve

Start of LTM

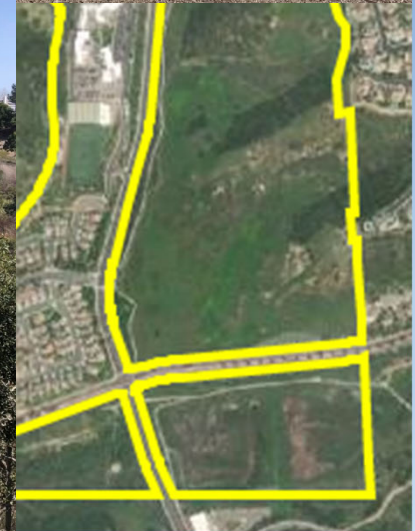
173.8-acre site

Management Duties:

- Bi-monthly patrols
- Vegetation Mapping
- Rare Plant Surveys
- Invasive control

Challenges:

- Invasive plants
- Trespassing



Bressi Ranch Preserve

Ward's weed (*Carrichtera annua*)

- First observed in 2008
- Threat of infestation
- Ongoing focused management



*Photos from identification card provided by the City

Sonata

Start of LTM

- 2.98 Acres
- Orcutt's Brodiaea (*Brodiaea orcuttii*)
- Thread-leaved brodiaea (*Brodiaea filifolia*)

Management Duties:

- 2 monitoring visits per year
 - 1 annual Qualitative Biological Survey
 - Vegetation Mapping
 - Invasive control
-
- Management will begin after the owner conducts final weeding events this spring.

