

Land Management Updates

HMP Annual Meeting



Vince Rivas and Kathleen Pollett
Habitat Managers

February 16, 2022

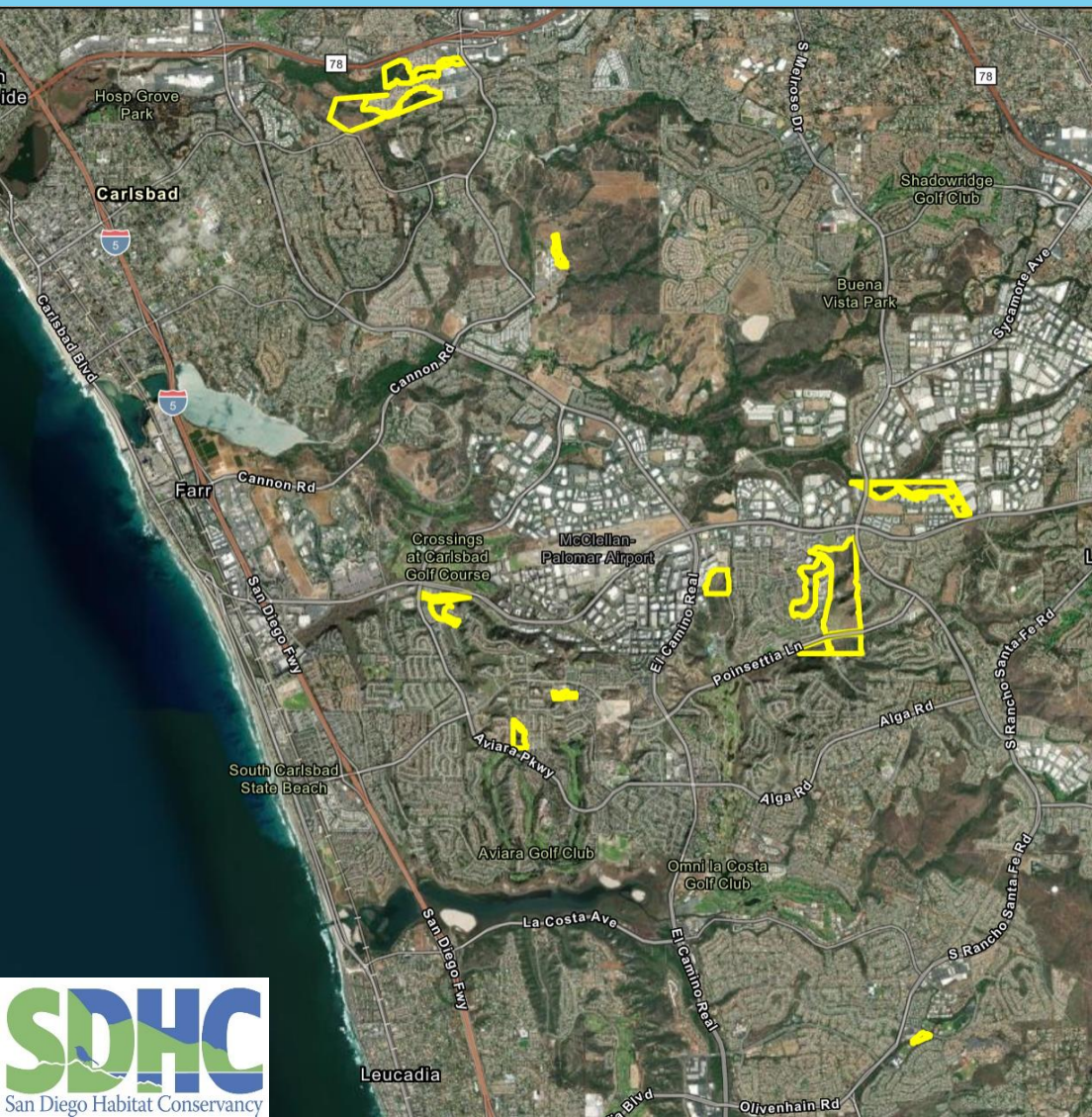
Land Trust Accreditation Renewal

Land Trust Accreditation Commission (LTAC) has renewed SDHC's accreditation, certifying that we meet the LTAC's ethical, legal, financial, conservation, and stewardship standards.

Originally accredited in 2016, SDHC was the first accredited land trust headquartered in San Diego County.



Open Space Preserves Managed by SDHC



Over 2,000 acres of managed open space land.

33 active preserves throughout the County, including 9 in Carlsbad (over 390 acres):

- Bressi Ranch
- Carlsbad Raceway
- Daybreak
- Emerald Pointe
- Laurel Tree Lane
- Muroya
- Quarry Creek
- Sage Creek High School
- Sonata

New Preserves

Daybreak Preserve:

- SDHC began management in June 2021
- Baseline mapping updates this spring



Sonata Preserve:

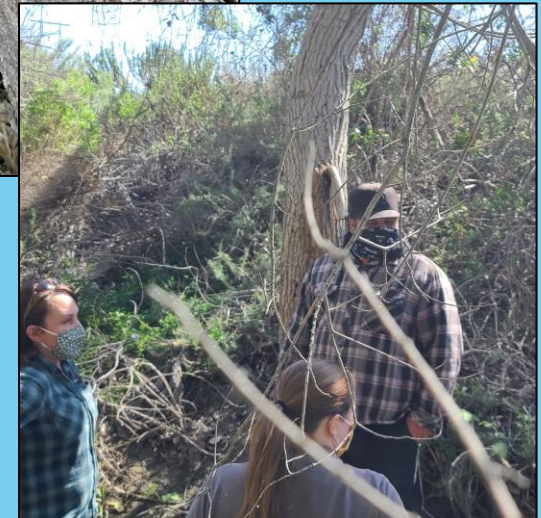
- SDHC began management in September 2021
- Weed Management Plan submitted
- Thread-leaved and Orcutt's Brodiaea (*Brodiaea filifolia* and *Brodiaea orcuttii*)



Polyphagous Shot Hole Borer (*Euwallacea* sp.) and Fusarium Dieback (*Fusarium* sp.)

Laurel Tree Lane (Encinas Creek)

- 2020/2021
 - SHB detected through lure traps in 2020
 - County CAL FIRE Grant, 8 trees removed in 2021 after verification through samples
- 2022
 - Additional monitoring by SDHC
 - Additional sampling and treatment by County



The background of the slide is a photograph of a natural landscape. It shows a field of dry, brown grasses and some green shrubs. In the distance, there are utility poles and power lines against a clear sky. A light green rectangular box is overlaid on the upper portion of the image, containing the project title and application information.

**San Diego Thornmint
(*Acanthomintha ilicifolia*)
Enhancement Project**

**Application for TransNet Environmental
Mitigation Program Land Management
Grant 2022**

San Diego Thornmint (*Acanthomintha ilicifolia*) Enhancement Project

In Collaboration

- Native Seed Bank, San Diego Zoo Wildlife Alliance
- Conservation Biology Institute
- The City of Carlsbad
- Center for Natural Lands Management
- San Diego Management and Monitoring Program
- San Diego State University

Management Strategic Plan Framework Rare Plant Management Plan for Conserved Lands in Western San Diego County



Prepared for
San Diego Association of Governments

Prepared by
Conservation Biology Institute and AECOM
in collaboration with
San Diego Management and Monitoring Program

March 2020

San Diego Thornmint (*Acanthomintha ilicifolia*) Enhancement Project

The F-RPMP recommends

- Ex situ seed bulking
- In situ seed bulking
- Reintroducing seed to increase occurrence size, genetic diversity and reduce relatedness for small populations (under 1,000 individuals)

Management Strategic Plan Framework Rare Plant Management Plan for Conserved Lands in Western San Diego County



Prepared for
San Diego Association of Governments

Prepared by
Conservation Biology Institute and AECOM
in collaboration with
San Diego Management and Monitoring Program

March 2020

San Diego Thornmint (*Acanthomintha ilicifolia*) Enhancement Project

Emerald Pointe Preserve

- Historic high of 110 recorded (since start of long-term management)
- Currently clip weeds and water by hand when onsite
- San Diego Zoo Wildlife Alliance to collect/bulk seed from the preserve population in 2022 if it expresses



Proposed Plan:

- In situ bulking and weed control through more frequent monitoring
- Control weeds in 0.5-acre area based on Inspect and Manager SDMMP data

**San Diego thornmint
(*Acanthomentha ilicifolia*)
Photo by Vince Rivas**

San Diego Thornmint (*Acanthomintha ilicifolia*) Enhancement Project

Carlsbad Raceway Preserve

- Historic high of over 1,000 individuals in 1986
- Highest since long term management started in 2014 is 15 individuals in 2020
- Native Seed Bank, San Diego Zoo Wildlife Alliance currently bulking seed collected in 2020



Proposed Plan:

- in situ bulking and weed control through more frequent monitoring
- Control weeds in 1-acre area based on Inspect and Manage SDMMP data

San Diego thornmint
(*Acanthomentha ilicifolia*)
Photo by Vince Rivas

Quarry Creek – Trespasser Prevention Application for EMP Grant 2022

Trespassing, encampments, and the associated waste have been a persistent issue along the Buena Vista Creek.

We recently applied for the SANDAG EMP grant to combat these issues, by proposing to install additional fencing and waste removal along Buena Vista Creek.

Collaborating with key stakeholders, including Cities of Oceanside and Carlsbad, CDFW, San Luis Rey Band of Mission Indians, Preserve Calavera, neighboring commercial businesses and residents, and volunteers to combat trespassing and impacts.

Protocol Species Surveys

Surveys for California gnatcatcher will be performed this year at the following Carlsbad preserves:

- Carlsbad Raceway
- Emerald Pointe
- Muroya
- Quarry Creek

Surveys for least Bell's vireo will be performed this year at the Quarry Creek Preserve.



Coastal California Gnatcatcher
(*Polioptila californica californica*)
Photo by Joechim Bertrands



Least Bell's Vireo
(*Vireo belli pusillus*)
Photo by Deepankar Das

Vegetation Mapping Updates

Update using the Vegetation Classification Manual for Western San Diego County (AECOM et al. 2011).

Updated mapping in 2021:

- Bressi Ranch
- Muroya
- Quarry Creek

Scheduled 2022 updates:

- Carlsbad Raceway
- Daybreak
- Sage Creek High School

Thank you!

Feel free to contact us at:
VinceR@sdhabitat.org or
KathleenP@sdhabitat.org

www.sdhabitat.org