

Update on CNLM-Managed Preserves in Carlsbad

Presentations by Preserve Managers: Brooke Prentice-Dekker, Stephen Rink, and Kathleen Balazs



Center for
Natural Lands
Management

Outline

- Brooke Prentice-Dekker (7 mins)
 - Biomonitoring and Preserve Results
 - Erosion Issues
- Stephen Rink (5 mins)
 - Oak planting at Lake Calavera
 - La Costa Glen Preserve
- Kathleen Balazs (3 mins)
 - Restoration
 - Wildlife Monitoring
 - E-bikes and illegal trails

Monitoring

- San Diego Thornmint
- Thread-leaved Brodiaea
- Coastal Sage Scrub
- Least Bell's Vireo
- Grasslands
- Orcutt's Hazardia
- Blochman's Dudleya
- Shot Hole Borer Surveys

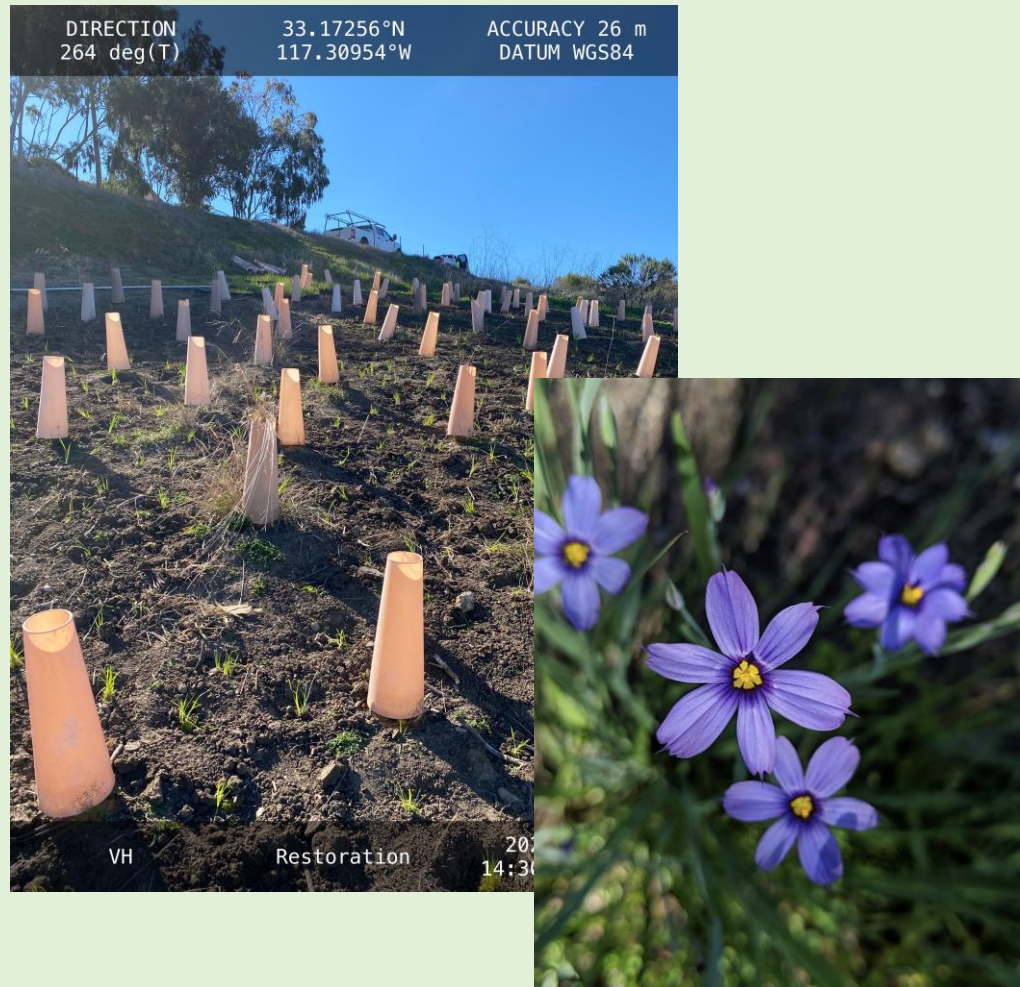


San Diego Thornmint

- Rainfall 4.85 inches
- Below Average Counts
- Rancho La Costa (329)
- Carlsbad Oaks North (13)
 - Outseed EFTS & EFTN
 - Uphill Outseed CON (34)



Calavera Hills Robertson Ranch



- Grassland Transects
 - Village H North
 - Highest Percent Cover Native Grass and Forbs (14 years)
 - Sisbel, Stiplu, Calmac
- Restoration: 2000 Native Grasses Installed
- CSS Monitoring
 - Slight decreases

Buena Vista Creek Ecological Preserve

- Thread-leaved Brodiaea
 - None Flowering except RLC
- Shot Hole Borer
 - None Detected
- Least Bell's Vireo
 - 5 males
- Knoll Enhancement



Carlsbad Oaks North

- Blochman's Dudleya
 - 9 Veg (4 flowering outside)
- Coast Live Oaks
 - GSOB
 - Aerial Imagery
- Wildlife Movement
- Oakmont
 - Old Growth Chapparal (0.23 acres)
 - 5 Year Restoration Plan



Kelly Ranch

- Orcutt's Hazardia
 - Declines (Adults Stable)
- Euphorbia Misera Planting
 - (~99% survivorship)
- Erosion...

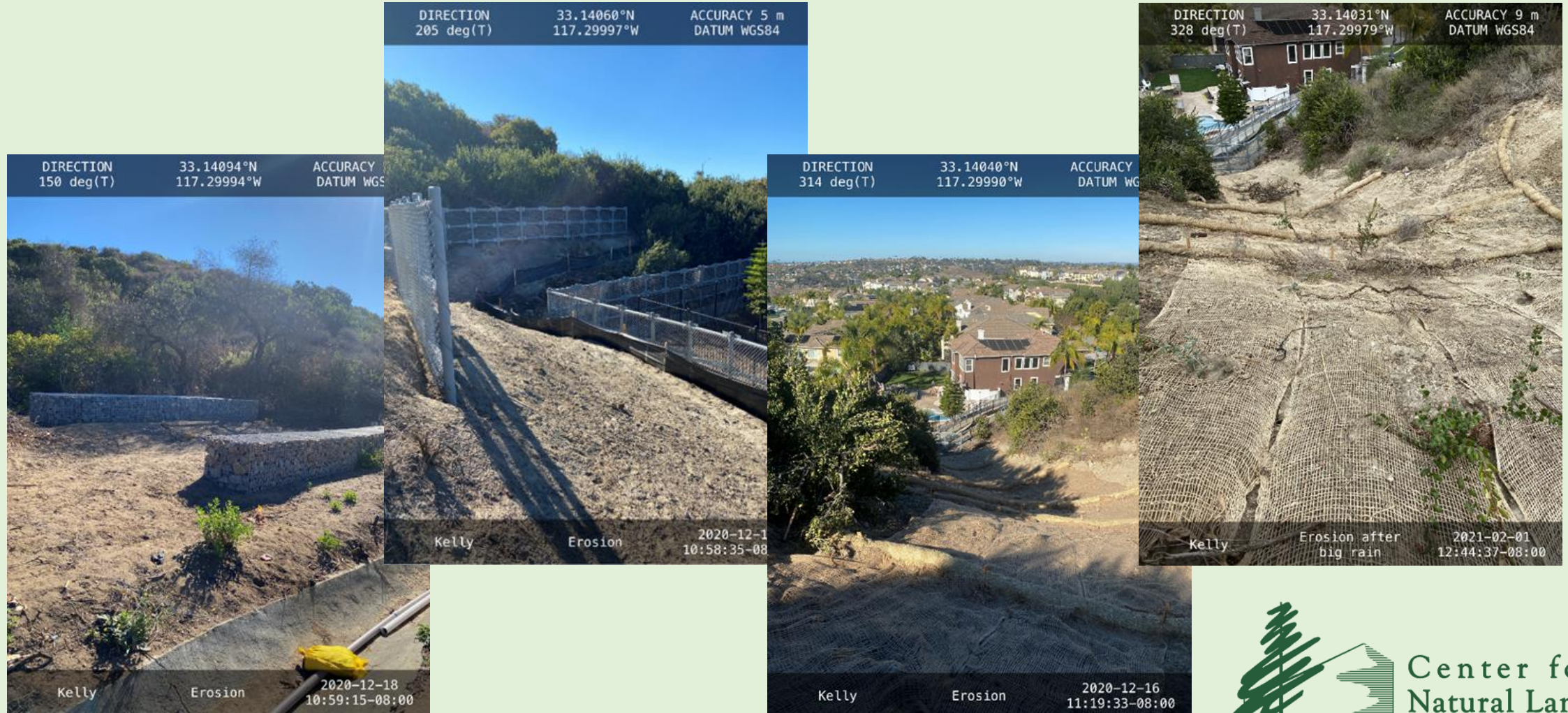


Erosion



- Heavy Rainfall April 2020
- Erosion Throughout SD
- Approximately 10 slumps KR
- Multiple Tons of Debris
- Work through Spring 2021

Erosion



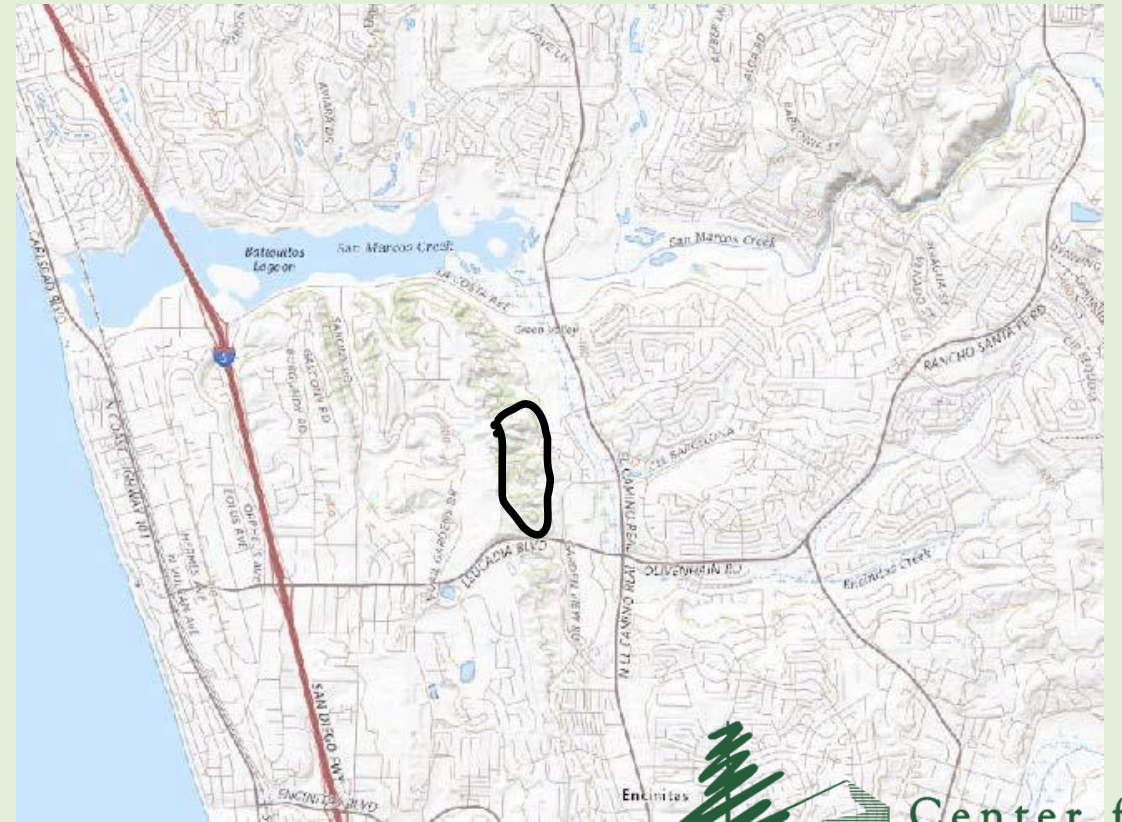
La Costa Glen Preserve



Center for
Natural Lands
Management

Preserve History

- The La Costa Glen Preserve was set aside as mitigation for the Continuing Life Communities development. In total, 104 acres was protected
- CNLM began management in January 2013



General Physiography

- The Preserve is generally east facing with the high elevation to the west and low elevation is to the east. The site is characterized as having steep bluffs to the west and heavily vegetated and undulating lands to the east.
- The primary soils on site are mapped as Rough Broken Land and subclassified as Torrey Sandstone Marine deposits in the upper elevations and alluvium underlying the lower elevations of the site. Some smaller flatter areas are mapped as Corralitos loamy sand



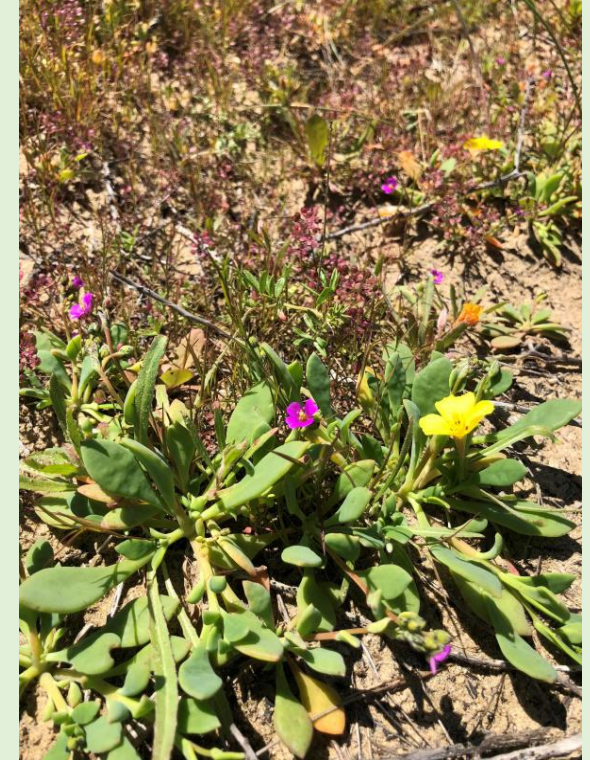
Vegetation and Sensitive Plant Species

- The Preserve is comprised primarily of Southern Maritime Chaparral and to a lesser degree, Diegan Coastal Sage Scrub, and Southern Willow Scrub
- *Sensitive and Rare Plant Species*
 - *California Adolphia (Adolphia californica)*
 - *Western Dichondra (Dichondra occidentalis)*
 - *Summer Holly (Comarostaphylis diversifolia)*
 - *Del Mar Manzanita (Arctostaphylos glandulosa ssp. Crassifolia)*



Additional Sensitive Plant Species

- wart stemmed ceanothus (*Ceanothus verucosus*)
- Nuttall's scrub oak (*Quercus dumosa*)
- prostrate spineflower (*Chorizanthe procumbens*)
- Seaside calandrinia (*Cistanthe maritima*)
- white morphology of the California Wishbone (*Mirabilis laevis*)



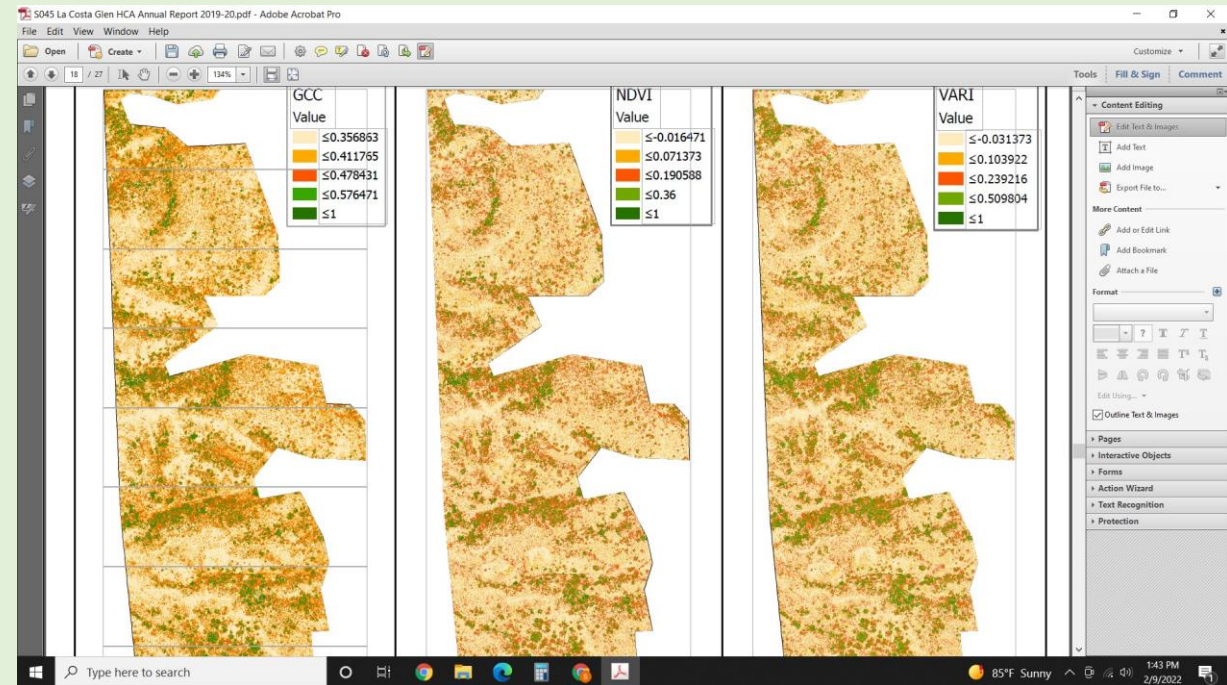
Animal Species

- California Gnatcatcher (*Poliioptila californica californica*)
- orange-throated whiptail (*Cnemidophorus hyperythrus beldingi*)
- Cooper's hawk (*Accipter cooperii*)
- Southern California rufous-crowned sparrow (*Aimophila ruficeps canescens*)
- Southern Mule Deer (*Odocoileus hemionus fugilatus*)



Monitoring

- Vegetation community assessments using aerial imagery assessments
- CAGN surveys
- Nuttall's Scrub Oak, Wart-stemmed Ceanothus, DMM, Summer Holly health assessments
- Wildlife movement
- San Diego Horned Lizard and Argentine ant threat assessments

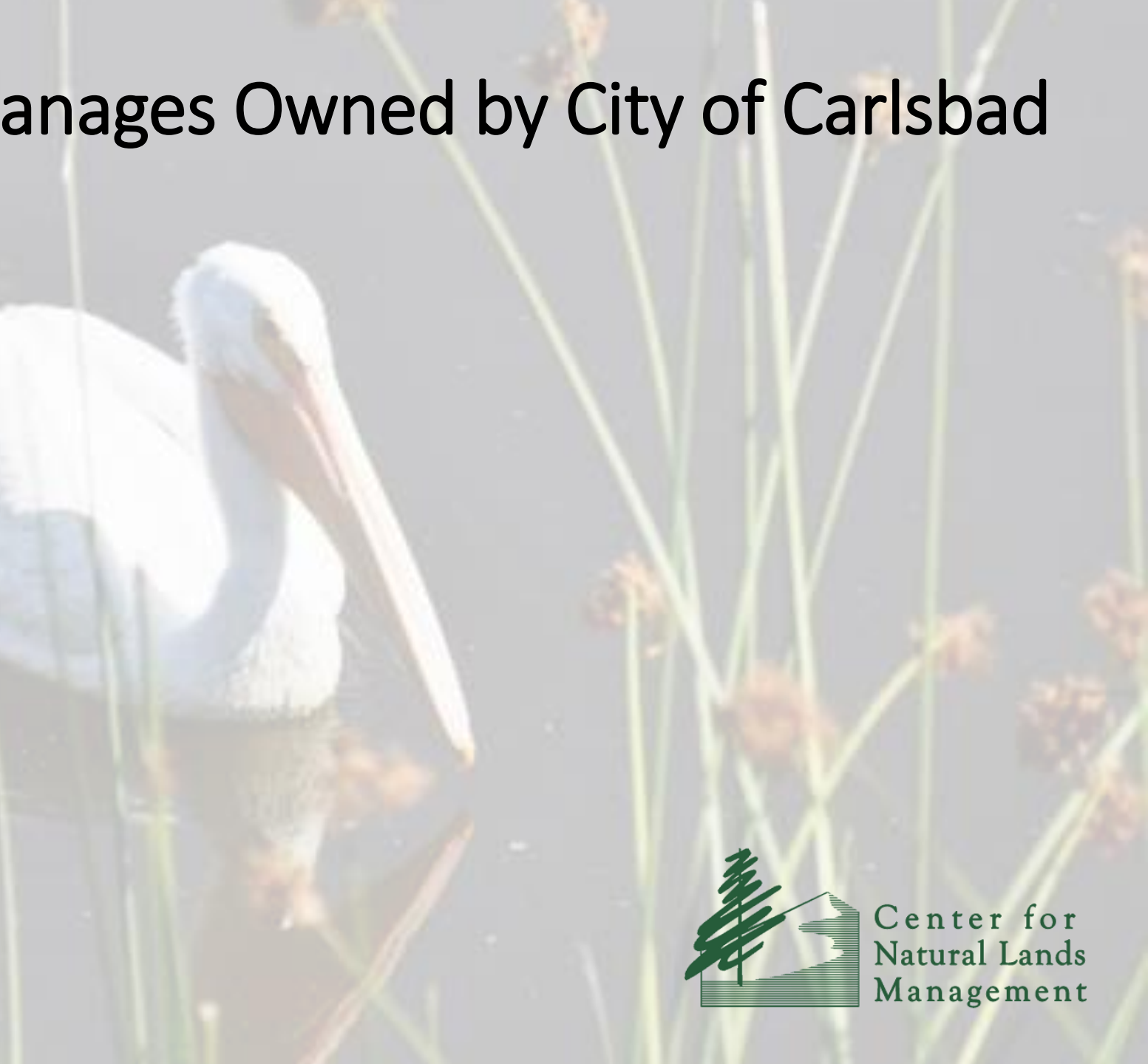


Threats

- Habitat fragmentation
- Trespass, BMX tracks
- Encampments/Trash
- Altered fire frequencies
- Climate Change
 - Tilt competition toward non-native species



Preserves CNLM Manages Owned by City of Carlsbad



Oak Planting at Lake Calavera



Center for
Natural Lands
Management

Rancho La Costa

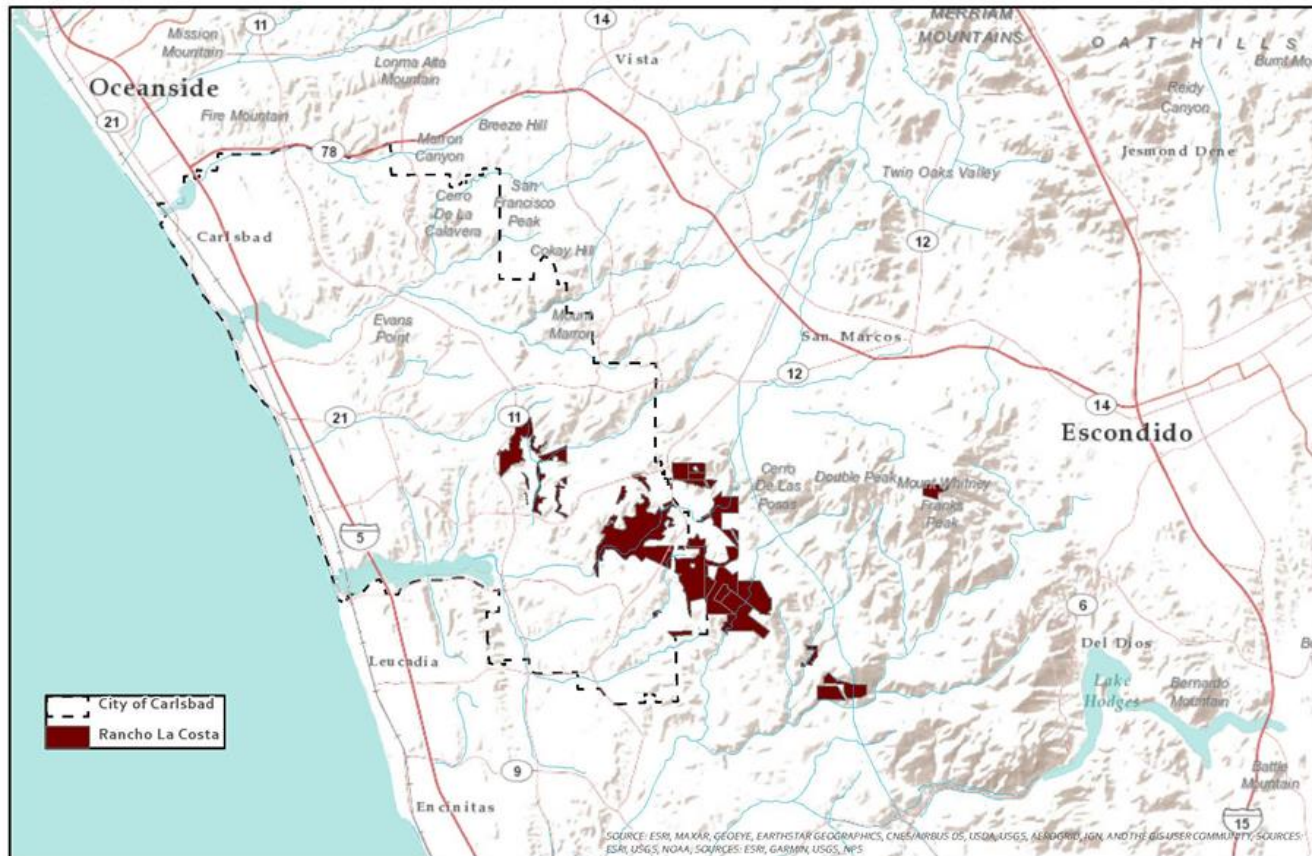


Figure 1. HCA Vicinity
Rancho La Costa Habitat Conservation Area
San Diego County, CA

0 1 2 Miles

Center for Natural Lands Management



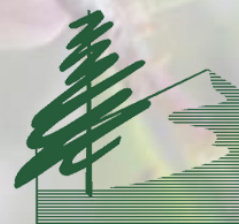
Center for
Natural Lands
Management

Habitat Restoration



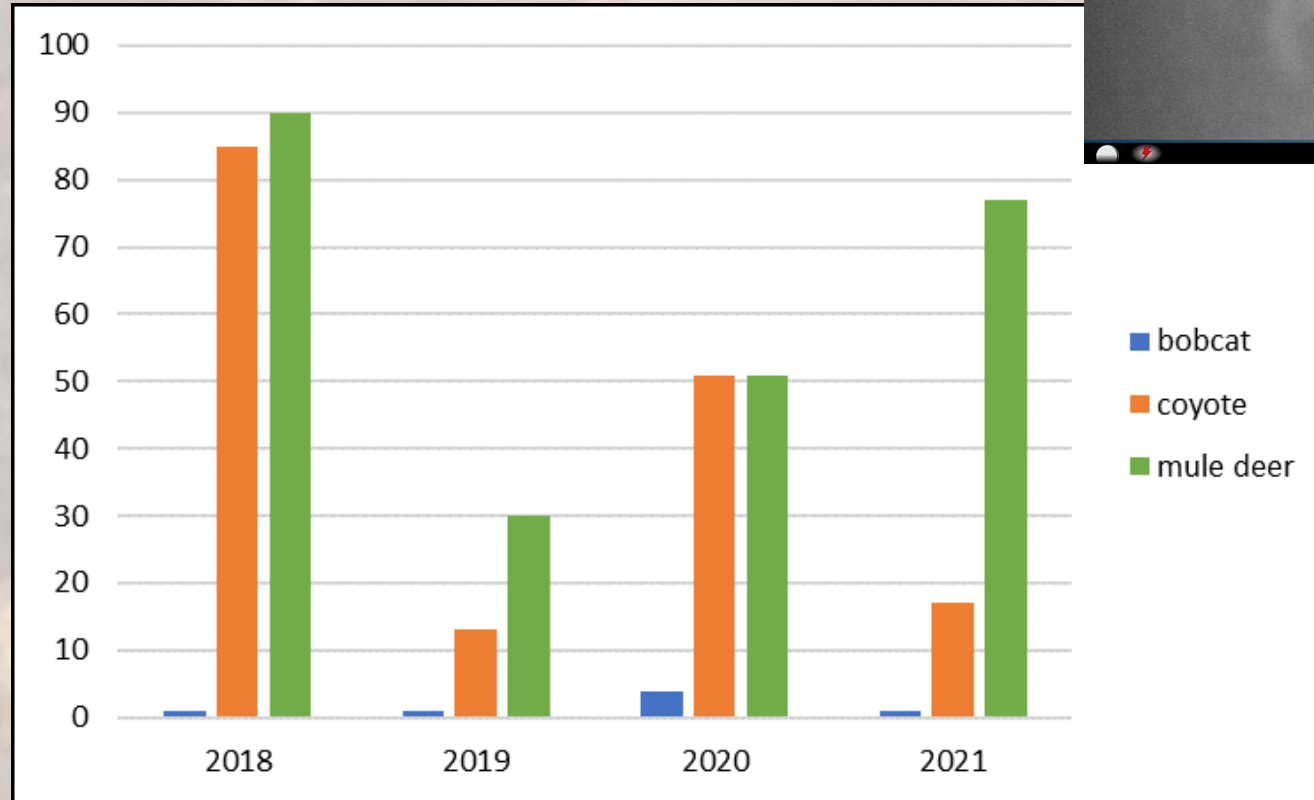
Center for
Natural Lands
Management

Habitat Restoration



Center for
Natural Lands
Management

Wildlife Monitoring



11/3/2020 3:17 AM



Center for
Natural Lands
Management

Rancho La Costa – E-bike and Illegal Trail Issues



Rancho La Costa – E-bike and Illegal Trail Issues



Future Plans

- Bird monitoring
 - CAGN, SWFL, LBVI
- Invasive Species Removal
- Continued SDTM Enhancement
- Clay Lens Assessments
- CNPS Reveles
- Restoration via Planting
- Sensitive Shrub Monitoring
- Bat Surveys
- Vegetation Mapping
- Pollinations Studies
- San Diego Horned Lizard and Ant Surveys

